



Product catalogue



BOLIX®

Unique façade Flexible tiles Bolix BQS



TABLE OF CONTENTS

EXTERNAL WALL INSULATION SYSTEMS	2-14
EXTERNAL WALL INSULATION SYSTEMS	2
BOLIX SYSTEMS AND SOLUTIONS	2
EWI FEATURES	3
BENEFITS OF HOME INSULATION	4
BOLIX HD EWI/SYSTEM SOLUTIONS	4
BOLIX EWI 10-YEAR GUARANTEE/SYSTEM SOLUTIONS	6
SYSTEM BOLIX PASSIVE THERM	6
REFURBISHMENT SYSTEMS AND SOLUTIONS	7
BASIC EWI/SYSTEM SOLUTIONS	8
BOLIX IZO-STROP SYSTEM	14
INTERIOR AND EXTERIOR PRODUCTS	15-30
EWI ADHESIVES AND BASE COATS	17
SETTING ACCELERATORS	19
REINFORCING MESHES	20
BOLIX FOAMS	20
RENDERS AND PLASTERS	20
THIN-COAT RENDERS	21
BOLIX COMPLEX ANTIMICROBIAL PROTECTION	23
EXTERIOR WALL PAINTS	24
KEY COATS	26
PRIMERS AND SEALERS	27
SKIM COATS/JOINT COMPOUNDS	30
DESIGN COLLECTION	31-40
DECORATIVE EFFECTS	32
PRODUCTS	38
PRODUCTS FOR CERAMICS AND NATURAL STONE INSTALLATION	42-46
COMPARISON OF CERAMIC TILE ADHESIVES	43
ADHESIVES, GROUTS AND OTHER PRODUCTS FOR CERAMICS AND NATURAL STONE	44
INTERIOR PAINTS	47-52
COMPARISON OF INTERIOR PAINTS	48
INTERIOR PAINTS	49
SKIM COATS/ JOINT COMPOUNDS AND INTERIOR PRODUCTS	50
PAINTS AND PRIMERS FOR PROFESSIONALS	51
PRODUCTS FOR TERRACES, LOGGIAS AND BALCONIES	53-58
PRODUCTS FOR TERRACES, LOGGIAS AND BALCONIES	54
BALCONY PROFILES	57
CEILINGS INSULATION IZO-STROP	59
BITUMEN WATERPROOFING	61

EXTERNAL WALL INSULATION / BOLIX SYSTEMS

PREMIUM SYSTEMS



BOLIX HD

EWI OF **EXTREME IMPACT RESISTANCE**



10 YEAR GUARANTEE

SYSTEM WITH **THE LONGEST PRODUCER'S GUARANTEE**



PASSIVE THERM

EWI FOR **PASSIVE AND ENERGY EFFICIENT BUILDINGS**

RETROFIT EWI SYSTEMS



COMPLEX

ANTI-MICROBIAL SYSTEM - WALL PROTECTION AGAINST MICROBIAL GROWTH



RENO TERM

EWI REFURBISHMENT AND REPAIR SYSTEM



DOUBLE THERM

RETROFIT SYSTEM - SYSTEM REFURBISHMENT

BASIC SYSTEMS



SYSTEM WITH ACRYLIC RENDER FINISH



SYSTEM WITH MINERAL RENDER FINISH



SYSTEM WITH SILICATE-SILICONE RENDER FINISH



SYSTEM WITH SILICATE RENDER FINISH



SYSTEM WITH SILICONE RENDER FINISH

BOLIX EWI FEATURES / COMPARISON

PREMIUM SYSTEMS

	INSULATION MATERIAL	IMPACT RESISTANCE	REDUCED WATER ABSORPTION	WATER VAPOUR PERMEABILITY	WEATHER RESISTANCE	SELF-CLEANING EFFECT	FLEXIBILITY	COLOUR STABILITY	RESISTANCE TO ORGANIC GROWTH	SYSTEM USE
BOLIX HD BRONZE	S	●	●●	●●●	●●●	●●●	●	●●●	●●●	🏠 🌳 🏢
BOLIX HD SILVER	S	●●	●●	●●●	●●●	●●●	●●●	●●●	●●●	🏠 🏢
BOLIX HD GOLD	S	●●●	●●●	●●●	●●●	●●●	●●●	●●●	●●●	🏢 🌳 🏠
BOLIX HD EXTREME	S	EXTREME	EXTREME	●●●	●●●	●●●	EXTREME	●●●	●●●	🏠 🏢 🏠
10 YEAR GUARANTEE *	S	●●●	●●●	●●●	●●●	●●●	●●●	●●●	●●●	🌳 🏠
PASSIVE THERM	S	●●	●●●	●●●	●●●	●●●	●●●	●●●	●●●	🏠
BOLIX ULTRACLEAN	S/W	●●●	●●●	●●●	●●●	●●●	●●●	●●●	EXTREME	🏠

BASIC SYSTEMS

ACRYLIC RENDER	S	●	●	●	●●	●	●●	●●	●●	🏠 🏢 🏠
WHITE MINERAL RENDER	S/W	●	●	●●●	●●	●	●	●●●	●●	🏠 🌳 🏢
MINERAL RENDER + PAINT	ACRYLIC	S	●	●●	●	●●	●	●●	●●	🏠 🏢 🏠
	ACRYLIC COMPLEX	S	●	●●	●	●●	●	●●	●●●	🏠 🏢 🏠
	SILICATE	S/W	●	●	●●●	●●●	●	●●●	●●●	🏠 🌳 🏢
	SILICONE	S/W	●	●●	●●●	●●●	●●	●●●	●●●	🏠 🌳 🏢
	SILICONE COMPLEX	S/W	●	●●	●●●	●●●	●●	●●●	●●●	🏠 🌳 🏢
SILICATE RENDER	S/W	●	●	●●●	●●●	●	●	●●●	🌳	
SILICONE AND SILICATE RENDER	S/W	●●	●●	●●	●●	●●	●●	●●●	●●	🏠 🌳 🏢
SILICONE RENDER	S/W	●●●	●●	●●●	●●●	●●●	●●●	●●●	●●●	🏠 🏢 🏠

* system finished with silicone render

● BASIC LEVEL ●● ENHANCED LEVEL ●●● HIGH LEVEL EXTREME EXTREME LEVEL

LEGEND



IMPACT RESISTANCE
Increased resistance to damage.



SELF-CLEANING EFFECT
Keeps the façade dry and clean.



REDUCED WATER ABSORPTION
Reduced water penetration through the coating.



FLEXIBILITY
Resistance to cracks caused by large temperature spikes and weather conditions.



WATER VAPOUR PERMEABILITY
Property which ensures that the moisture is wicked or driven away from the wall.



COLOUR STABILITY
Resistance to UV radiation that leads to top coat ageing and degradation.



WEATHER RESISTANCE
Weather tightness of the coating.



RESISTANCE TO ORGANIC GROWTH
Increased resistance of the coating to algal and fungal growth.

SYSTEM USE



SINGLE-FAMILY HOMES
Detached house with wall surface area of up to 500 m².



URBAN SPACES
Areas with high levels of pollution.



LARGE WALL
Multi-family house.



ENERGY EFFICIENT HOMES
A building with a low heat energy demand.



GREEN SPACES
Building located in the close vicinity of trees and green spaces.

SYSTEM FEATURES

EXTERNAL WALL INSULATION WITH BOLIX/BENEFITS

The purpose of house insulation is to prevent the inside of the building from cooling down or overheating. It is commonly believed that insulation is a solution for winter, but in fact an effective thermal insulation is also useful during summer heat waves. Thermal insulation lets you enjoy thermal comfort, but its installation is also about cutting costs and saving money.

EWI system is one of the most important building elements. The durability and lifespan of your house façade, house occupants' quality and comfort of life as well as energy efficiency of the investment depend on the EWI system that you select and on workmanship i.e. correct installation of the system.

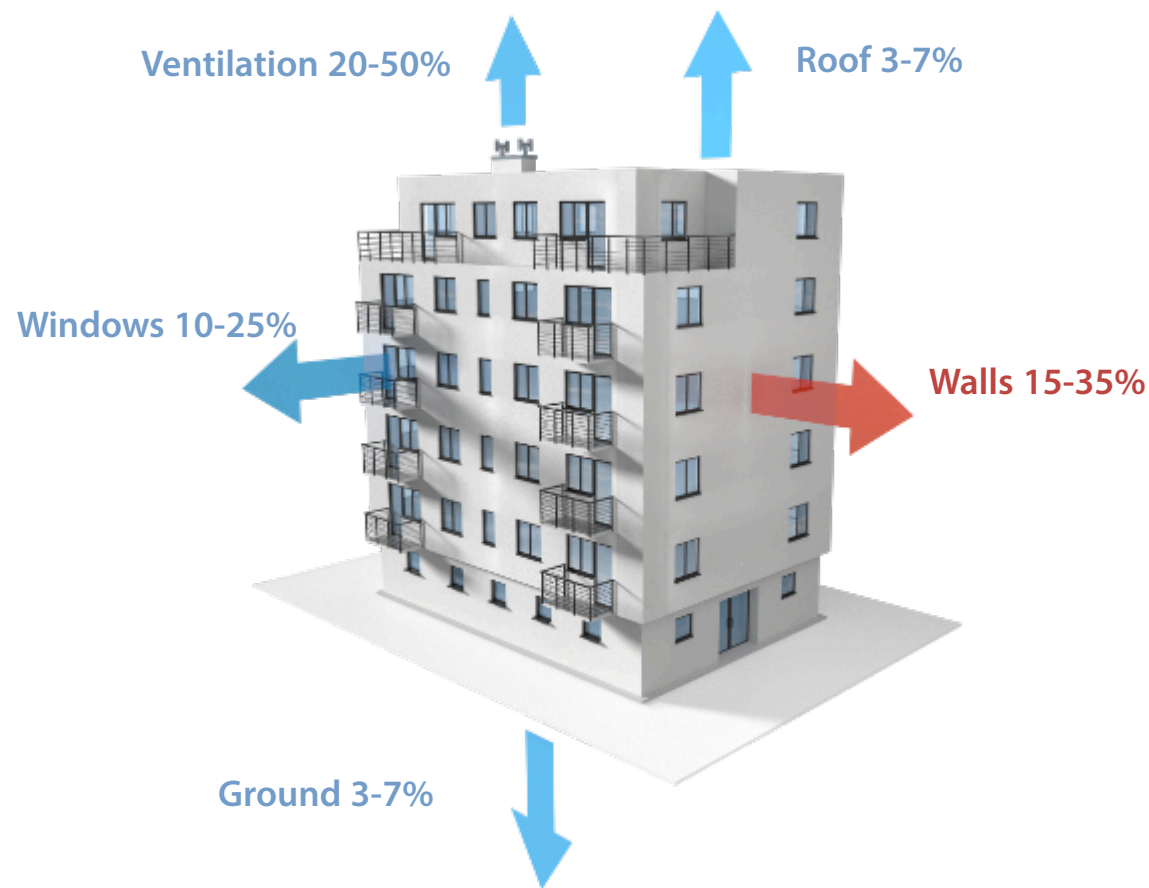
It is essential that a COMPLETE EWI SYSTEM is installed - a complete set of products from one producer, covered by a Technical Approval. This will ensure a guarantee for the system as well as an optimal and compatible composition of products.

BENEFITS OF EWI INSULATION

- reduced heating costs (even by 30%),
- improved appearance of the house exterior and a positive visual impact,
- increased level of heating comfort, improved microclimate,
- extended life of the building and increased weather resistance,
- higher value of the house in the real estate market,
- environmental protection by reducing CO₂ emission,
- protection of your home interior through inhibition and prevention of algal and fungal growth.

ESTIMATED HEAT LOSS

OF A TYPICAL NON-INSULATED MULTI-FAMILY HOUSE



IMPORTANT ELEMENTS OF EFFECTIVE EWI INSULATION

- insulation performance and tightness of the installed windows,
- roof and attic insulation,
- below grade insulation,
- detailing, insulation around balconies, door/window reveals, wall/roof junction, etc. - typical thermal bridges.

EXTERNAL WALL INSULATION / PREMIUM SYSTEMS / BOLIX HD

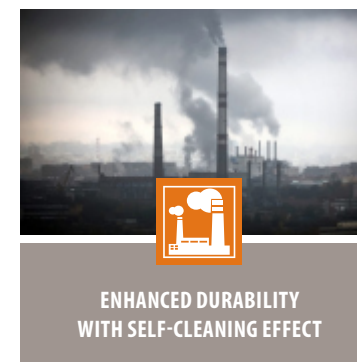
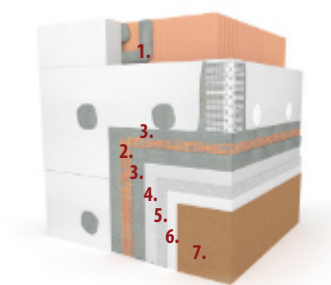


BOLIX HD BRONZE / POLYSTYRENE INSULATED EWI SYSTEM WITH MINERAL RENDER FINISH + SILICONE PAINT

The system ensures excellent vapour permeability of the top coat and a self-cleaning effect, for the best price. BOLIX SIL-P with water beading or lotus effect provides a highly hydrophobic top coat. Water beads up and the droplets run off the surface.



COMPONENTS	NAME OF PRODUCT	PAGE NO.	UNIT	AVERAGE COVERAGE [UoM/m ²]	COVERAGE RANGE [UoM/m ²]
1. ADHESIVE FOR POLYSTYRENE	BOLIX Z	17	kg	5,00	≥4,00
2. REINFORCING MESH	BOLIX HD 158/ S	20	m ²	1,10	≥1,10
3. BASE COAT	BOLIX U	17	kg	4,50	≥4,00
4. KEY COATI	BOLIX OP	26	kg	0,33	0,25÷0,40
5. THIN-COAT RENDER	BOLIX MP KA 15	21	kg	2,35	2,00 ÷ 2,80
6. PRIMER	BOLIX SIG	27	kg	0,15	0,10 ÷ 0,20
7. EXTERIOR PAINT	BOLIX SIL-P	25	l	0,35	0,30 ÷ 0,40

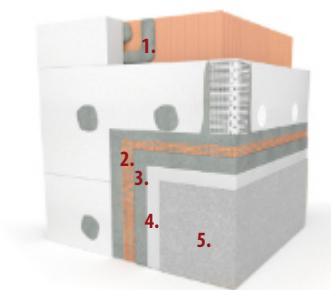


BOLIX HD SILVER / POLYSTYRENE INSULATED EWI SYSTEM WITH SILICONE RENDER FINISH

Its self-cleaning ability makes this system perfect for buildings located in highly industrialised or urban areas. The top coat is provided by the silicone render with lotus effect BOLIX SIT-P that is, similarly as BOLIX SIL-P, extremely hydrophobic i.e. water repellent. This solution provides increased impact resistance.



COMPONENTS	NAME OF PRODUCT	PAGE NO.	UNIT	AVERAGE COVERAGE [UoM/m ²]	COVERAGE RANGE [UoM/m ²]
1. ADHESIVE FOR POLYSTYRENE	BOLIX Z	17	kg	5,00	≥4,00
2. REINFORCING MESH	BOLIX HD 158/S	20	m ²	1,10	≥1,10
3. BASE COAT	BOLIX U	17	kg	4,50	≥4,00
4. KEY COATI	BOLIX SIG COLOUR	26	kg	0,33	0,25 ÷ 0,40
5. THIN-COAT RENDER	BOLIX SIT-P 1,5 KA	23	kg	2,50	2,20 ÷ 2,80
	BOLIX SIT-P 2 KA	23	kg	2,90	2,60 ÷ 3,20



● BASIC LEVEL ● ENHANCED LEVEL ● HIGH LEVEL

EXTERNAL WALL INSULATION / PREMIUM SYSTEMS/ BOLIX HD

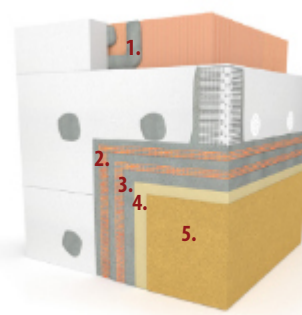


BOLIX HD GOLD / POLYSTYRENE INSULATED EWI SYSTEM WITH SILICONE RENDER FINISH

Due to the application of double mesh reinforcement and fibre-reinforced base coat, BOLIX HD GOLD achieves the impact strength exceeding 20 J. Additionally, reduced water absorption, high intercoat adhesion and self-cleaning effect make BOLIX HD GOLD extremely weather resistant.

IMPACT RESISTANCE	REDUCED WATER ABSORPTION	FLEXIBILITY VAPOUR PERMEABILITY	WEATHER RESISTANCE	SELF-CLEANING EFFECT	FLEXIBILITY	COLOUR STABILITY	RESISTANCE TO ORGANIC GROWTH
● ● ● ●	● ● ● ●	● ● ● ●	● ● ● ●	● ● ● ●	● ● ● ●	● ● ● ●	● ● ● ●

COMPONENTS	NAME OF PRODUCT	PAGE NO.	UNIT	AVERAGE COVERAGE [UoM/m ²]	COVERAGE RANGE [UoM/m ²]
1. ADHESIVE FOR POLYSTYRENE	BOLIX Z	17	kg	5,00	≥4,00
2. REINFORCING MESH x 2	BOLIX HD 158/S	20	m ²	1,10	≥1,10
3. BASE COAT	BOLIX UZB	19	kg	6,00	≥6,00
4. KEY COAT	BOLIX SIG COLOUR	26	kg	0,33	0,25 ÷ 0,40
5. THIN-COAT RENDER	BOLIX SIT-P 1,5 KA	23	kg	2,50	2,20 ÷ 2,80
	BOLIX SIT-P 2 KA	23	kg	2,90	2,60 ÷ 3,20

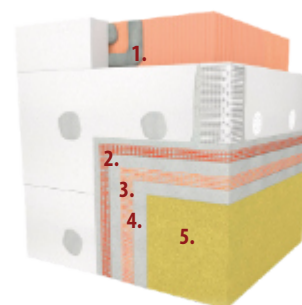


BOLIX HD EXTREME / POLYSTYRENE INSULATED EWI SYSTEM WITH SILICONE RENDER FINISH

THE MOST TECHNOLOGICALLY ADVANCED SET OF PRODUCTS IN THE BOLIX HD SYSTEM. THROUGH the use of an innovative dispersion adhesive, the Bolix HD Extreme system achieves previously unattainable parameters. **BOLIX HD EXTREME is characterized by extreme impact resistance above 150 J**, offers excellent adhesion to eps and flexibility unprecedented on the market.

IMPACT RESISTANCE	REDUCED WATER ABSORPTION	FLEXIBILITY VAPOUR PERMEABILITY	WEATHER RESISTANCE	SELF-CLEANING EFFECT	FLEXIBILITY	COLOUR STABILITY	RESISTANCE TO ORGANIC GROWTH
EXTREME	EXTREME	● ● ● ●	● ● ● ●	● ● ● ●	EXTREME	● ● ● ●	● ● ● ●

COMPONENTS	NAME OF PRODUCT	PAGE NO.	UNIT	AVERAGE COVERAGE [UoM/m ²]	COVERAGE RANGE [UoM/m ²]
1. ADHESIVE FOR POLYSTYRENE	BOLIX Z	17	kg	5,00	≥4
2. REINFORCING MESH	BOLIX HD 335/P	20	m ²	1,00	1,00
3. REINFORCING MESH	BOLIX HD 158/S	20	m ²	1,10	≥1,10
4. BASE COAT	BOLIX KD	18	kg	5,70	5,00 ÷ 6,40
5. THIN-COAT RENDER	BOLIX SIT-P 1,5 KA	23	kg	2,50	2,20 ÷ 2,80
	BOLIX SIT-P 2 KA	23	kg	2,90	2,60 ÷ 3,20



● BASIC LEVEL ● ● ENHANCED LEVEL ● ● ● HIGH LEVEL **EXTREME** EXTREME LEVEL

The above calculations are for reference only. They are based on products available in the basic colour, without a surcharge. For the calculations the average coverage of system components was taken. The calculations do not include insulation material, fixings, starter tracks, corners, other accessories and labour costs.

EXTERNAL WALL INSULATION / PREMIUM SYSTEMS / 10-YEAR GUARANTEE



ENHANCED RESISTANCE TO CRACKING

POLYSTYRENE INSULATED EWI SYSTEM WITH SILICONE RENDER FINISH

It is characterised by high resistance to cracks caused by large temperature spikes and weather conditions.



IMPACT RESISTANCE



REDUCED WATER ABSORPTION



FLEXIBILITY VAPOUR PERMEABILITY



WEATHER RESISTANCE



SELF-CLEANING EFFECT



FLEXIBILITY



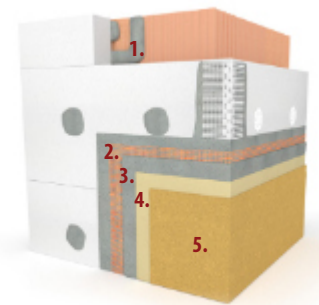
COLOUR STABILITY



RESISTANCE TO ORGANIC GROWTH



COMPONENTS	NAME OF PRODUCT	PAGE NO.	UNIT	AVERAGE COVERAGE [UoM/m ²]	COVERAGE RANGE [UoM/m ²]
1. ADHESIVE FOR POLYSTYRENE	BOLIX ALFA	19	kg	5,00	≥4,00
2. REINFORCING MESH	BOLIX HD 158/S	20	m ²	1,10	≥1,10
3. BASE COAT	BOLIX BETA	19	kg	4,50	≥4,00
4. KEY COAT	BOLIX EPSILON	26	kg	0,33	0,25 ÷ 0,40
5. THIN-COAT RENDER	BOLIX SIGMA 1,5 KA	23	kg	2,50	2,20 ÷ 2,80
	BOLIX SIGMA 2 KA	23	kg	2,90	2,60 ÷ 3,20



EXTERNAL WALL INSULATION / PREMIUM SYSTEMS / PASSIVE THERM



SYSTEM FOR PASSIVE AND ENERGY EFFICIENT BUILDINGS

BOLIX PASSIVE THERM / EWI SYSTEM FOR PASSIVE AND ENERGY EFFICIENT BUILDINGS

The use of innovative solutions for system installation and surface preparation ensures that the system meets the most stringent criteria for passive and energy efficient buildings.



IMPACT RESISTANCE



REDUCED WATER ABSORPTION



FLEXIBILITY VAPOUR PERMEABILITY



WEATHER RESISTANCE



SELF-CLEANING EFFECT



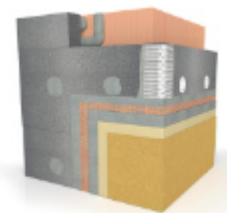
FLEXIBILITY



COLOUR STABILITY



RESISTANCE TO ORGANIC GROWTH



THIS IS THE ONLY SYSTEM FOR PASSIVE HOUSES WITH TECHNICAL APPROVAL *

*as at 01.12.2016

BOLIX PASSIVE THERM IS SUITABLE FOR

EPS BOARDS UP TO 50 CM

FOR WHITE AND GREY EPS

● BASIC LEVEL ● ENHANCED LEVEL ● HIGH LEVEL

EXTERNAL WALL INSULATION / REFURBISHMENT SYSTEMS / COMPLEX



FAÇADE FREE OF CONTAMINATION AND ORGANIC GROWTH

BOLIX COMPLEX

A solution, where the exterior masonry is cleaned of organic growth such as mould, fungi and algae and then painted with BOLIX paints or a clear sealer that has an increased resistance to organic growth.

Z BOLIX COMPLEX YOU GAIN

CLEAN BUILDING
FAÇADE FREE OF
ORGANIC GROWTH

BUILDING ENVELOPE
PROTECTED FOR THE FUTURE

SOLUTION CONFIRMED
BY THE TECHNICAL
RECOMMENDATION

EXTERNAL WALL INSULATION / REFURBISHMENT SYSTEMS / RENO TERM



REPAIR OF DAMAGED FAÇADE

BOLIX RENO TERM

The system is designed to renovate and repair damaged elements of EWI systems with polystyrene.

Z BOLIX RENO TERM YOU GAIN

PROFESSIONAL
TECHNICAL SUPPORT

REPAIRED FAÇADE
AND ATTRACTIVE FINISH

SOLUTION CONFIRMED
BY THE TECHNICAL
RECOMMENDATION

EXTERNAL WALL INSULATION / REFURBISHMENT SYSTEMS / DOUBLE TERM



OVERCLADDING/RETROFIT
OF EXISTING INSULATION

BOLIX DOUBLE THERM*

A cutting edge solution, where an additional insulation layer is added to the existing polystyrene ETICS and where the existing insulation is prepared prior to retrofitting. It also includes a professional technical support in the scope of surface survey and preparation.

Z BOLIX DOUBLE THERM YOU GAIN

PROFESSIONAL
TECHNICAL SUPPORT

IMPROVED THERMAL
PERFORMANCE OF
THE BUILDING THROUGH
OVERCLADDING

NO REMOVAL
OF EXISTING INSULATION

REDUCED ENERGY
CONSUMPTION

SOLUTION COVERED
BY A TECHNICAL APPROVAL

*RECOMMENDED CROSS-KNOT FIXING BOLIX KWM

The BOLIX KWM Cross Knot is the only innovative solution on the market that increases the resistance of thermal insulation to wind loads even several times, when compared to a standard fixing with the same number of anchors. A Technical Approval has been issued for the solution and the performance of the fixing has been confirmed by the Building Research Institute ITB.

RECOMMENDED
FOR GABLE WALLS

RECOMMENDED
FOR PASSIVE BUILDINGS

RECOMMENDED TO RETROFIT
OR OVERCLAD WITH
THE SYSTEM DOUBLE THERM



EXTERNAL WALL INSULATION / BASIC SYSTEMS

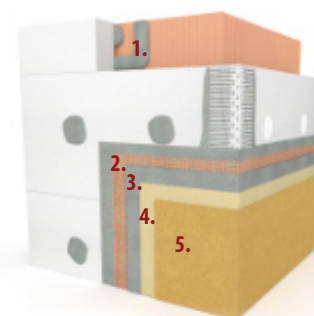


POLYSTYRENE INSULATED EWI SYSTEM WITH SILICONE RENDER FINISH

The system insulated with mineral wool and top coated with a durable render finish of extremely low surface absorption, which offers increased flexibility, vapour permeability as well as stain and weather resistance.

IMPACT RESISTANCE	REDUCED WATER ABSORPTION	FLEXIBILITY VAPOUR PERMEABILITY	WEATHER RESISTANCE	SELF-CLEANING EFFECT	FLEXIBILITY	COLOUR STABILITY	RESISTANCE TO ORGANIC GROWTH
● ● ●	● ●	● ● ●	● ● ●	● ● ●	● ● ●	● ● ●	● ● ●

COMPONENTS	NAME OF PRODUCT	PAGE NO.	UNIT	COVERAGE [UoM/m ²]	RANGE [UoM/m ²]
1. ADHESIVE FOR POLYSTYRENE	BOLIX Z	17	kg	5,00	≥4,00
2. REINFORCING MESH	BOLIX HD 158/S	20	m ²	1,10	≥1,10
3. BASE COAT	BOLIX U	17	kg	4,50	≥4,00
4. KEY COAT	BOLIX SIG COLOUR	26	kg	0,33	0,25÷0,40
5. THIN-COAT RENDER	BOLIX SIT 1,5 KA	22	kg	2,50	2,20÷2,80
	BOLIX SIT 2 KA	22	kg	3,10	2,80÷3,40

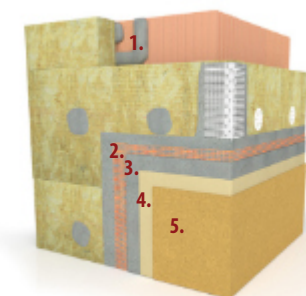


EWI SYSTEM WITH POLYSTYRENE AS INSULATION AND SILICONE RENDER AS TOP COAT

The system insulated with polystyrene and top coated with a durable render finish of extremely low surface absorption, which offers increased flexibility, vapour permeability as well as stain and weather resistance.

IMPACT RESISTANCE	REDUCED WATER ABSORPTION	FLEXIBILITY VAPOUR PERMEABILITY	WEATHER RESISTANCE	SELF-CLEANING EFFECT	FLEXIBILITY	COLOUR STABILITY	RESISTANCE TO ORGANIC GROWTH
● ● ●	● ●	● ● ●	● ● ●	● ● ●	● ● ●	● ● ●	● ● ●

COMPONENTS	NAME OF PRODUCT	PAGE NO.	UNIT	COVERAGE [UoM/m ²]	RANGE [UoM/m ²]
1. MW ADHESIVE	BOLIX ZW	18	kg	5,00	≥4,00
2. REINFORCING MESH	BOLIX HD 158/S	20	m ²	1,10	≥1,10
3. BASE COAT	BOLIX WM	18	kg	5,00	≥4,00
4. KEY COAT	BOLIX SIG COLOUR	26	kg	0,33	0,25÷0,40
5. THIN-COAT RENDER	BOLIX SIT 1,5 KA	22	kg	2,50	2,20÷2,80
	BOLIX SIT 2 KA	22	kg	3,10	2,80÷3,40



● BASIC LEVEL ● ● ENHANCED LEVEL ● ● ● HIGH LEVEL

EXTERNAL WALL INSULATION / BASIC SYSTEMS



EWI SYSTEM WITH POLYSTYRENE AS INSULATION AND SILICATE RENDER AS TOP COAT

The system is insulated with polystyrene and top coated with a highly vapour permeable render finish, resistant to changing weather conditions. As a mineral render, it is often used to preserve and restore historic Buildings.



IMPACT RESISTANCE



REDUCED WATER ABSORPTION



FLEXIBILITY VAPOUR PERMEABILITY



WEATHER RESISTANCE



SELF-CLEANING EFFECT



FLEXIBILITY



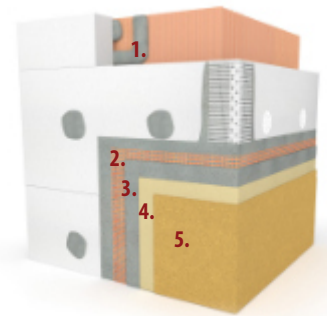
COLOUR STABILITY



RESISTANCE TO ORGANIC GROWTH



COMPONENTS	NAME OF PRODUCT	PAGE NO.	UNIT	COVERAGE [UoM/m ²]	RANGE [UoM/m ²]
1. ADHESIVE FOR POLYSTYRENE	BOLIX Z	17	kg	5,00	≥4,00
2. REINFORCING MESH	BOLIX HD 158/S	20	m ²	1,10	≥1,10
3. BASE COAT	BOLIX U	17	kg	4,50	≥4,00
4. KEY COAT	BOLIX SG COLOUR	26	kg	0,33	0,25÷0,40
5. THIN-COAT RENDER	BOLIX S 1,5 KA	22	kg	2,75	2,50÷3,00
	BOLIX S 2 KA	22	kg	3,25	3,00÷3,50



EWI SYSTEM WITH POLYSTYRENE AS INSULATION AND SILICATE RENDER AS TOP COAT

The system insulated with mineral wool and top coated with a highly vapour permeable render finish, resistant to changing weather conditions. As a mineral render, it is often used to preserve and restore historic buildings.



IMPACT RESISTANCE



REDUCED WATER ABSORPTION



FLEXIBILITY VAPOUR PERMEABILITY



WEATHER RESISTANCE



SELF-CLEANING EFFECT



FLEXIBILITY



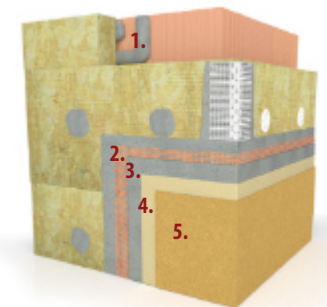
COLOUR STABILITY



RESISTANCE TO ORGANIC GROWTH



COMPONENTS	NAME OF PRODUCT	PAGE NO.	UNIT	COVERAGE [UoM/m ²]	RANGE [UoM/m ²]
1. MW ADHESIVE	BOLIX ZW	18	kg	5,00	≥4,00
2. REINFORCING MESH	BOLIX HD 158/S	20	m ²	1,10	≥1,10
3. BASE COAT	BOLIX WM	18	kg	5,00	≥4,50
4. KEY COAT	BOLIX SG COLOUR	26	kg	0,33	0,25÷0,40
5. THIN-COAT RENDER	BOLIX S 1,5 KA	22	kg	2,75	2,50÷3,00
	BOLIX S 2 KA	22	kg	3,25	3,00÷3,50



● BASIC LEVEL

● ● ENHANCED LEVEL

● ● ● HIGH LEVEL

The above calculation is for reference only. It is based on products available in the basic colour, without a surcharge.

For the calculation average coverage of system components were taken. The calculation does not include insulation material, fixings, starter lists, corners, other accessories and labour costs.

EXTERNAL WALL INSULATION / BASIC SYSTEMS



EWI SYSTEM WITH POLYSTYRENE AS INSULATION AND SILICATE-SILICONE RENDER AS TOP COAT

This EWI system with polystyrene as insulation offers enhanced durability and provides a water-repellent render finish, which is also highly flexible, water vapour permeable as well as stain and weather resistant.



IMPACT RESISTANCE



REDUCED WATER ABSORPTION



FLEXIBILITY VAPOUR PERMEABILITY



WEATHER RESISTANCE



SELF-CLEANING EFFECT



FLEXIBILITY



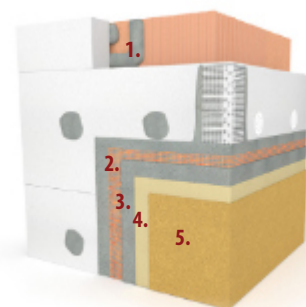
COLOUR STABILITY



RESISTANCE TO ORGANIC GROWTH



COMPONENTS	NAME OF PRODUCT	PAGE NO.	UNIT	COVERAGE [UoM/m ²]	RANGE [UoM/m ²]
1. ADHESIVE FOR POLYSTYRENE	BOLIX Z	17	kg	5,00	≥4,00
2. REINFORCING MESH	BOLIX HD 158/S	20	m ²	1,10	≥1,10
3. BASE COAT	BOLIX U	17	kg	4,50	≥4,00
4. KEY COAT	BOLIX SIG COLOUR	26	kg	0,33	0,25÷0,40
5. THIN-COAT RENDER	BOLIX SI-SIT 1,5 KA	22	kg	2,50	2,20÷2,80
	BOLIX SI-SIT 2 KA	22	kg	3,10	2,80÷3,40



EWI SYSTEM WITH MINERAL WOOL AS INSULATION AND SILICATE-SILICONE RENDER AS TOP COAT

This EWI system with mineral wool as insulation offers enhanced durability and provides a water-repellent render finish, which is also highly flexible, water vapour permeable as well as stain and weather resistant.



IMPACT RESISTANCE



REDUCED WATER ABSORPTION



FLEXIBILITY VAPOUR PERMEABILITY



WEATHER RESISTANCE



SELF-CLEANING EFFECT



FLEXIBILITY



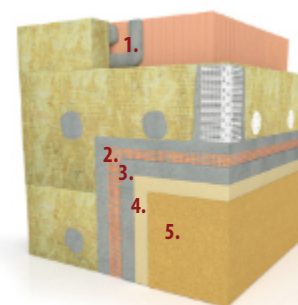
COLOUR STABILITY



RESISTANCE TO ORGANIC GROWTH



COMPONENTS	NAME OF PRODUCT	PAGE NO.	UNIT	COVERAGE [UoM/m ²]	RANGE [UoM/m ²]
1. MW ADHESIVE	BOLIX ZW	18	kg	5,00	≥4,00
2. REINFORCING MESH	BOLIX HD 158/S	20	m ²	1,10	≥1,10
3. BASE COAT	BOLIX WM	18	kg	5,00	≥4,50
4. KEY COAT	BOLIX SIG COLOUR	26	kg	0,33	0,25÷0,40
5. THIN-COAT RENDER	BOLIX SI-SIT 1,5 KA	22	kg	2,50	2,20÷2,80
	BOLIX SI-SIT 2 KA	22	kg	3,10	2,80÷3,40



● BASIC LEVEL ● ENHANCED LEVEL ● HIGH LEVEL

EXTERNAL WALL INSULATION / BASIC SYSTEMS



EWI SYSTEM WITH POLYSTYRENE AS INSULATION TOP COATED WITH MINERAL RENDER AND SILICONE PAINT

The polystyrene insulation system, top coated with highly vapour permeable render, resistant to changing weather conditions and painted with silicone paint, which provides a water-repellent and vapour permeable paint coat that is also highly stain and weather resistant.



IMPACT RESISTANCE



REDUCED WATER ABSORPTION



FLEXIBILITY VAPOUR PERMEABILITY



WEATHER RESISTANCE



SELF-CLEANING EFFECT



FLEXIBILITY



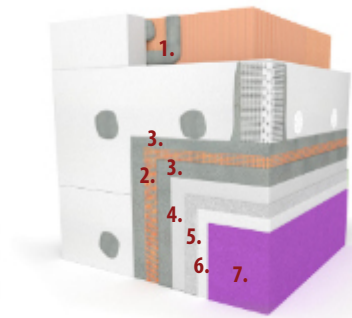
COLOUR STABILITY



RESISTANCE TO ORGANIC GROWTH



COMPONENTS	NAME OF PRODUCT	PAGE NO.	UNIT	COVERAGE [UoM/m ²]	RANGE [UoM/m ²]
1. ADHESIVE FOR POLYSTYRENE	BOLIX Z	17	kg	5,00	≥4,00
2. REINFORCING MESH	BOLIX HD 158/S	20	m ²	1,10	≥1,10
3. BASE COAT	BOLIX U	17	kg	4,50	≥4,00
4. KEY COAT	BOLIX OP	26	kg	0,33	0,25÷0,40
5. MINERAL RENDER	BOLIX MP KA 15	21	kg	2,35	2,00÷2,70
6. PRIMER	BOLIX SIG	26	kg	0,15	0,10÷0,20
7. EXTERIOR PAINT	BOLIX SIL	24	l	0,35	0,30÷0,40



EWI SYSTEM WITH MINERAL WOOL AS INSULATION TOP COATED WITH MINERAL RENDER AND SILICONE PAINT

The mineral wool insulation system, top coated with highly vapour permeable render, resistant to changing weather conditions and painted with silicone paint, which provides a water-repellent and vapour permeable paint coat that is highly stain and weather resistant.



IMPACT RESISTANCE



REDUCED WATER ABSORPTION



FLEXIBILITY VAPOUR PERMEABILITY



WEATHER RESISTANCE



SELF-CLEANING EFFECT



FLEXIBILITY



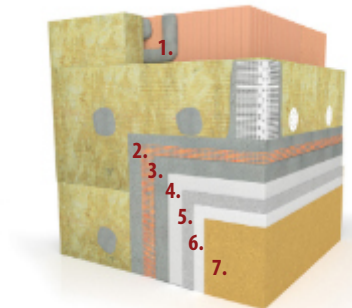
COLOUR STABILITY



RESISTANCE TO ORGANIC GROWTH



COMPONENTS	NAME OF PRODUCT	PAGE NO.	UNIT	COVERAGE [UoM/m ²]	RANGE [UoM/m ²]
1. MW ADHESIVE	BOLIX ZW	18	kg	5,00	≥4,00
2. REINFORCING MESH	BOLIX HD 158/S	20	m ²	1,10	≥1,10
3. BASE COAT	BOLIX WM	18	kg	5,00	≥4,50
4. KEY COAT	BOLIX OP	26	kg	0,33	0,25÷0,40
5. MINERAL RENDER	BOLIX MP KA 15	21	kg	2,35	2,00÷2,70
6. PRIMER	BOLIX SIG	26	kg	0,15	0,10÷0,20
7. EXTERIOR PAINT	BOLIX SIL	24	l	0,35	0,30÷0,40



● BASIC LEVEL

● ENHANCED LEVEL

● HIGH LEVEL

The above calculation is for reference only. It is based on products available in the basic colour, without a surcharge.

For the calculation average coverage of system components were taken. The calculation does not include insulation material, fixings, starter lists, corners, other accessories and labour costs.

EXTERNAL WALL INSULATION / BASIC SYSTEMS



EWI SYSTEM WITH POLYSTYRENE AS INSULATION TOP COATED WITH MINERAL RENDER AND SILICATE PAINT

The polystyrene insulation system, top coated with highly vapour permeable render, resistant to changing weather conditions and painted with silicate paint, which provides a well-bonded, colourful, matte paint coat that is highly vapour permeable and weather resistant.



IMPACT RESISTANCE



REDUCED WATER ABSORPTION



FLEXIBILITY VAPOUR PERMEABILITY



WEATHER RESISTANCE



SELF-CLEANING EFFECT



FLEXIBILITY



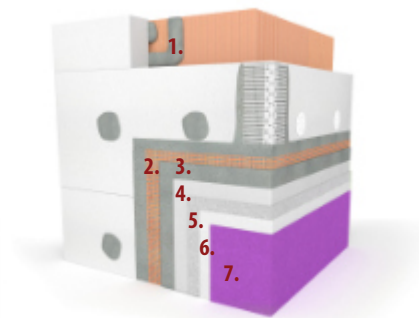
COLOUR STABILITY



RESISTANCE TO ORGANIC GROWTH



COMPONENTS	NAME OF PRODUCT	PAGE NO.	UNIT	COVERAGE [UoM/m ²]	RANGE [UoM/m ²]
1. ADHESIVE FOR POLYSTYRENE	BOLIX Z	17	kg	5,00	≥4,00
2. REINFORCING MESH	BOLIX HD 158/S	20	m ²	1,10	≥1,10
3. BASE COAT	BOLIX U	17	kg	4,50	≥4,00
4. KEY COAT	BOLIX OP	26	kg	0,33	0,25÷0,40
5. MINERAL RENDER	BOLIX MP KA 15	21	kg	2,35	2,00÷2,70
6. PRIMER	BOLIX SG	27	kg	0,15	0,10÷0,20
7. EXTERIOR PAINT	BOLIX SZ	24	l	0,35	0,30÷0,40



EWI SYSTEM WITH MINERAL WOOL AS INSULATION TOP COATED WITH MINERAL RENDER AND SILICATE PAINT

The mineral wool insulation system, top coated with highly vapour permeable render, resistant to changing weather conditions and painted with silicate paint, which provides a well-bonded, colourful, matte paint coat that is highly vapour permeable and weather resistant.



IMPACT RESISTANCE



REDUCED WATER ABSORPTION



FLEXIBILITY VAPOUR PERMEABILITY



WEATHER RESISTANCE



SELF-CLEANING EFFECT



FLEXIBILITY



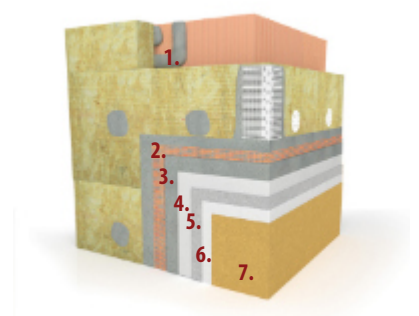
COLOUR STABILITY



RESISTANCE TO ORGANIC GROWTH



COMPONENTS	NAME OF PRODUCT	PAGE NO.	UNIT	COVERAGE [UoM/m ²]	RANGE [UoM/m ²]
1. MW ADHESIVE	BOLIX ZW	18	kg	5,00	≥4,00
2. REINFORCING MESH	BOLIX HD 158/S	20	m ²	1,10	≥1,10
3. BASE COAT	BOLIX WM	18	kg	5,00	≥4,50
4. KEY COAT	BOLIX OP	26	kg	0,33	0,25÷0,40
5. MINERAL RENDER	BOLIX MP KA 15	21	kg	2,35	2,00÷2,70
6. PRIMER	BOLIX SG	27	kg	0,15	0,10÷0,20
7. EXTERIOR PAINT	BOLIX SZ	24	l	0,35	0,30÷0,40



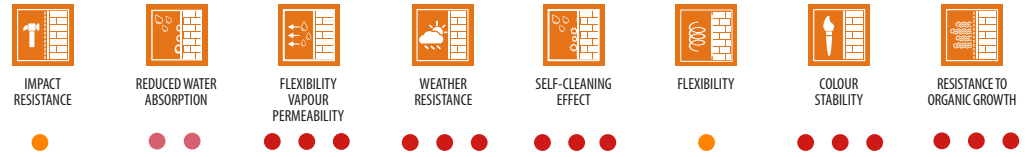
● BASIC LEVEL ● ● ENHANCED LEVEL ● ● ● HIGH LEVEL

EXTERNAL WALL INSULATION / BASIC SYSTEMS

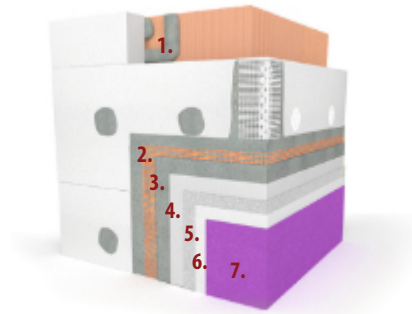


EWI SYSTEM WITH POLYSTYRENE AS INSULATION TOP COATED WITH MINERAL RENDER AND SILICONE PAINT WITH WATER BEADING (LOTUS) EFFECT

The system with polystyrene as insulation material, top coated with a highly vapour permeable render finish, resistant to changing weather conditions and top coated with BOLIX SIL-P, the premium silicone hydrophobic paint with water beading effect, which provides a well-bonded, colourful, matte paint coat that is highly vapour permeable, resistant to algal growth, UV radiation and weather conditions.



COMPONENTS	NAME OF PRODUCT	PAGE NO.	UNIT	COVERAGE [UoM/m ²]	RANGE [UoM/m ²]
1. ADHESIVE FOR POLYSTYRENE	BOLIX Z	17	kg	5,00	≥4,00
2. REINFORCING MESH	BOLIX HD 158/S	20	m ²	1,10	≥1,10
3. BASE COAT	BOLIX U	17	kg	4,50	≥4,00
4. KEY COAT	BOLIX OP	26	kg	0,33	0,25÷0,40
5. THIN-COAT RENDER	BOLIX MP KA 15	21	kg	2,35	2,00÷2,70
6. PRIMER	BOLIX SIG	27	kg	0,15	0,10÷0,20
7. EXTERIOR PAINT	BOLIX SIL-P	25	l	0,35	0,30÷0,40

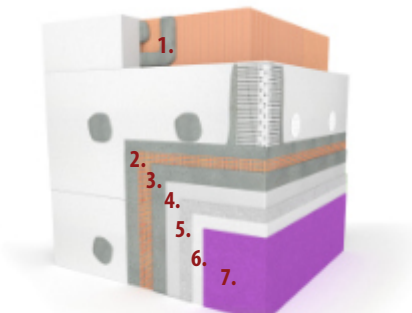


EWI SYSTEM WITH POLYSTYRENE AS INSULATION TOP COATED WITH MINERAL RENDER AND ACRYLIC PAINT

The polystyrene insulation system, top coated with highly vapour permeable render, resistant to changing weather conditions and painted with acrylic paint, which provides a colourful, matte paint coat, highly resistant to changing weather conditions and scrubbing.



COMPONENTS	NAME OF PRODUCT	PAGE NO.	UNIT	Coverage MATERIJAŁU [UoM/m ²]	RANGE [UoM/m ²]
1. ADHESIVE FOR POLYSTYRENE	BOLIX Z	17	kg	5,00	≥4,00
2. REINFORCING MESH	BOLIX HD 158/S	20	m ²	1,10	≥1,10
3. BASE COAT	BOLIX U	17	kg	4,50	≥4,00
4. KEY COAT	BOLIX OP	26	kg	0,33	0,25÷0,40
5. MINERAL RENDER	BOLIX MP KA 15	21	kg	2,35	2,00÷2,70
6. PRIMER	BOLIX N	28	kg	0,15	0,10÷0,20
7. EXTERIOR PAINT	BOLIX AZ	24	l	0,35	0,30÷0,40



● BASIC LEVEL ● ENHANCED LEVEL ● HIGH LEVEL

The above calculation is for reference only. It is based on products available in the basic colour, without a surcharge. For the calculation average coverage of system components were taken. The calculation does not include insulation material, fixings, starter lists, corners, other accessories and labour costs.

EXTERNAL WALL INSULATION / BASIC SYSTEMS



EWI SYSTEM WITH POLYSTYRENE AS INSULATION TOP COATED WITH ACRYLIC RENDER

The system provides extremely stable colours, high flexibility and performance as well as optimal adhesion and easy application with increased resistance to wetting.



IMPACT RESISTANCE



REDUCED WATER ABSORPTION



FLEXIBILITY VAPOUR PERMEABILITY



WEATHER RESISTANCE



SELF-CLEANING EFFECT



FLEXIBILITY



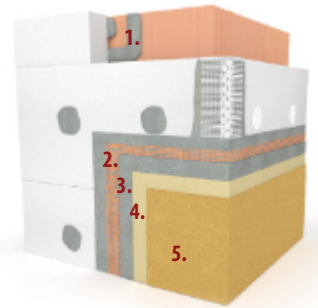
COLOUR STABILITY



RESISTANCE TO ORGANIC GROWTH



COMPONENTS	NAME OF PRODUCT	PAGE NO.	UNIT	COVERAGE [UoM/m ²]	COVERAGE RANGE [UoM/m ²]
1. ADHESIVE FOR POLYSTYRENE	BOLIX Z	17	kg	5,00	≥4,00
2. REINFORCING MESH	BOLIX HD 158/S	20	m ²	1,10	≥1,10
3. BASE COAT	BOLIX U	17	kg	4,50	≥4,00
4. KEY COAT	BOLIX OP	26	kg	0,33	0,25 ÷ 0,40
5. THIN-COAT RENDER	BOLIX KA 1,5	21	kg	2,50	2,20 ÷ 2,80
	BOLIX KA	21	kg	3,10	2,80 ÷ 3,40



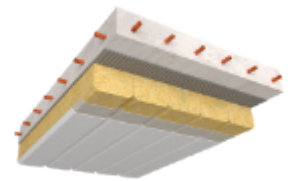
THERMAL INSULATION / BOLIX IZO-STROP



MESH-FREE CEILING INSULATION SYSTEM

BOLIX IZO-STROP

BOLIX IZO-STROP is a complete ceiling insulation system of the underside of floors (ceilings) over spaces like garages, basements, etc. It offers excellent thermal and acoustic performance, what makes it the best solution to provide thermal insulation and protection to large-area ceilings. The system has been classified as fire retardant, non-combustible and not producing flaming droplets/particles.



WITH BOLIX IZO-STROP YOU GAIN

SIMPLIFIED INSULATION INSTALLATION AND REDUCED CYCLE TIME

TOP COAT APPLICATION BY SPRAYING

SOLUTION CONFIRMED BY THE TECHNICAL APPROVAL



Indestructible facade!
Bolix HD system



BOLIX[®]



INTERIOR AND EXTERIOR PRODUCTS TYPE



PRODUCT PACKAGING

TYPE	PRODUCT DESIGNATION MEASURE	UNIT	NUMBER OF PIECES ON A PALLET	TOTAL WEIGHT ON PALLET
RENDERS	30	kg	24	720
	25	kg	24	600
	15	kg	44	660
KEY COATS	25	kg	24	600
	15	kg	24	360
	10	kg	44	440
	5	kg	80	400
PRIMERS AND SEALERS [CANISTER, BOTTLE]	5	kg, l	108	540
	1	kg, l	360	360
PAINTS	18	l	24	432
	10	l	44	440
	5	l	80	400
	2,5	l	88	220
BITUMEN	32	kg	12	384
	32	l	12	384
	30	l	12	360
	25	l	18	450
ADHESIVES, SKIM COATS	25	kg	48	1200
JOINT COMPOUNDS	20	kg	48	960
	19	kg	33	627
WATERPROOFING	25+8,3	kg	24+24	799,20
	14	kg	44	616
	7	kg	80	560
	4	kg	88	352
GROUTS	2	kg	312	624
	5	kg	120	600
	20	kg	48	960

Permanent
insulation
increased adhesion
of U and Z
adhesives



COMPARISON OF INSULATION ADHESIVES

ADHESIVES	BOLIX Z	BOLIX U	BOLIX UZB	BOLIX US	BOLIX UZ	BOLIX ZW	BOLIX WM	BOLIX ALFA	BOLIX BETA	BOLIX KD	BOLIX UWM
EARLY AGE ADHESION	● ● ●	● ●	● ●	● ●	● ●	●	●	● ● ●	● ●	N/A	●
IMPACT RESISTANCE	N/A	● ●	● ● ● ●	● ● ● ●	● ● ● ●	N/A	● ●	N/A	● ● ● ●	EXTREME	● ●
EASY TO WORK AND TROWEL	● ●	● ●	● ● ● ●	● ● ● ●	● ● ● ●	● ●	● ●	● ●	● ● ● ●	● ● ● ●	● ●
RESISTANT TO AGING	● ●	● ●	● ●	● ● ● ●	● ● ● ●	● ●	● ●	● ●	● ●	● ● ● ●	● ●
APPLICATION TEMP. RANGE	● ●	● ●	● ● ● ●	● ●	● ● ● ●	● ●	● ●	● ●	● ● ● ●	● ●	● ●
MICROFIBRE REINFORCED	✗	✗	✓	✓	✗	✗	✗	✗	✓	✓	✗
FOR POLYSTYRENE BONDING	✓	✓	✓	✓	✓	✗	✗	✓	✓	✗	✓
FOR MINERAL WOOL	✗	✗	✗	✗	✗	✓	✓	✗	✗	✗	✓
FOR EMBEDDING MESH	✗	✓	✓	✓	✓	✗	✓	✗	✓	✓	✓
FOR GREY EPS	✓	✓	✓	✓	✗	✗	✗	✓	✓	✓	✓

● BASIC LEVEL ● ● ENHANCED LEVEL ● ● ● HIGH LEVEL EXTREME EXTREME LEVEL

BOLIX Z

ADHESIVE FOR BONDING POLYSTYRENE BOARDS OF INCREASED EARLY AGE STRENGTH



- Offers good adhesion to mineral surface and polystyrene, just 48 h from bonding of insulation boards.
- Suitable for thermal insulation of passive houses and energy efficient buildings with EPS board thickness up to 50 cm.
- Dedicated for white and grey EPS boards and XPS boards.



Type	Coverage per 1 m ² [kg/m ²]*	Packaging unit [kg]
BOLIX Z	≥ 4,0	25

BOLIX U

UNIVERSAL BASE COAT AND POLYSTYRENE ADHESIVE



- Formulated for embedding mesh and bonding of insulation boards.
- Offers good adhesion to mineral surface and polystyrene, just 48 h from bonding of insulation boards.
- Suitable for thermal insulation of passive houses and energy efficient buildings with EPS board thickness up to 50 cm.



Type	Coverage per 1 m ² [kg/m ²]*	Packaging unit [kg]
BOLIX U	Polystyrene board bonding ≥ 4,0 Base coat application ≥ 4,0	25

BOLIX US

UNIVERSAL BASE COAT AND POLYSTYRENE ADHESIVE, FIBRE REINFORCED



- Formulated for embedding mesh and installation of insulation boards.
- Increased resistance to cracking and crazing.
- Offers excellent adhesion to mineral surface and polystyrene.
- Suitable for thermal insulation of passive houses and energy efficient buildings with EPS board thickness up to 50 cm.
- Water vapour permeable..
- Component of the EWI retrofit and repair system, including overcladding, covered by an ITB Technical Recommendation.
- Dedicated for white and grey EPS boards and XPS boards.

Type	Coverage per 1 m ² [kg/m ²]*	Packaging unit [kg]
BOLIX US	Polystyrene board bonding ≥ 4,0 Base coat application ≥ 4,0	25

*Product coverage may vary with surface condition, mainly irregularities as well as the selected application technology, therefore it may be higher than specified.

ADHESIVES AND BASE COATS

LAUREAT KONKURSU



BOLIX UZ UNIVERSAL WINTER BASE COAT AND POLYSTYRENE ADHESIVE



- Formulated for embedding mesh and bonding of insulation boards.
- Offers excellent adhesion to mineral surface and polystyrene.
- Water vapour permeable..
- Application at ambient and surface temperatures from 0 °C.

- Component of the EWI retrofit and repair system, including overcladding, covered by the ITB Technical Recommendation.
- Suitable for EPS boards.

Type	Coverage per 1 m ² [kg/m ²] *	Packaging unit [kg]
BOLIX UZ	Polystyrene board bonding ≥ 4,0 Base coat application ≥ 4,0	25

BOLIX ZW ADHESIVE FOR MINERAL WOOL



- Offers good adhesion to mineral surface and mineral wool.
- Ma bardzo dobre właściwości robocze.
- Designed for mineral wool slabs and MW lamella.

Type	Coverage per 1 m ² [kg/m ²] *	Packaging unit [kg]
BOLIX ZW	Ribbon and dab method ≥ 4,0 Notched trowel or full surface method ≥ 5,0	25

BOLIX WM UNIVERSAL BASE COAT AND MINERAL WOOL ADHESIVE



- Suitable for embedding mesh and bonding mineral wool.
- Offers good adhesion to mineral surface and mineral wool.

- Easy to work and trowel.
- Designed for mineral wool slabs and MW lamella.

Type	Coverage per 1 m ² [kg/m ²] *	Packaging unit [kg]
BOLIX WM	Ribbon and dab method ≥ 4,0 Notched trowel or full surface method ≥ 5,0 Base coat application ≥ 4,5	25

BOLIX UWM UNIVERSAL ADHESIVE & BASE COAT FOR EPS XPS BOARDS AND MW SLABS



- Excellent adhesion to mineral surfaces and insulation boards
- Suitable for bonding insulation and as a base coat.

- Water vapour permeable.

Type	Coverage per 1 m ² [kg/m ²] *	Packaging unit [kg]
BOLIX UWM	Ribbon and dab method ≥ 4,0 Notched trowel or full surface method ≥ 4,0 (EPS, XPS), ≥ 5,0 (WM) Base coat application ≥ 4,0 (EPS, XPS), ≥ 4,5 (WM)	25

BOLIX KD CEMENT-FREE FIBRE REINFORCED BASE COAT



- Increased resistance to cracking and crazing.
- Offers extreme impact resistance (within the solution BOLIX HD EXTREME) and high flexibility.
- Highly water-repellent.

- Easy to work and trowel.
- Can be tinted.
- No priming necessary prior to render application.
- Suitable for EPS boards.

Type	Coverage per 1 m ² [kg/m ²] *	Packaging unit [kg]
BOLIX KD	≥ 3,0 (single mesh) > 5,0 (double reinforcement including a combination of standard and armour mesh) 0,9 ÷ 1,4 (levelling the surface)	30

*Product coverage may vary with surface condition, mainly irregularities as well as the selected application technology, therefore it may be higher than specified.



BOLIX UZB

WHITE UNIVERSAL BASE COAT AND POLYSTYRENE ADHESIVE WITH MICROFIBRES



- Increased resistance to cracking and crazing.
- Offers excellent adhesion to mineral surface and polystyrene.
- Water vapour permeable..
- Enables application at ambient and surface temperatures from 3°C.

- Component of the EWI retrofit and repair system, including overcladding, covered by the ITB Technical Recommendation.
- Suitable for EPS boards.

Type	Coverage per 1 m ² [kg/m ²] *	Packaging unit [kg]
BOLIX UZB	Polystyrene board bonding ≥ 4,0 Base coat application ≥ 4,0	25

BOLIX ALFA

ADHESIVE FOR BONDING POLYSTYRENE BOARDS OFFERING INCREASED ADHESION AND EARLY AGE STRENGTH



- Offers good adhesion to mineral surface and polystyrene, just 24 h after bonding insulation boards.
- Suitable for thermal insulation of passive houses and energy efficient buildings

- Dedicated for white and grey EPS boards of thickness up to 50 cm.
- Component of the EWI system covered by a 10-YEAR GUARANTEE.

Type	Coverage per 1 m ² [kg/m ²] *	Packaging unit [kg]
BOLIX ALFA	≥ 4,0	25

BOLIX BETA

UNIVERSAL MICRO-FIBRE REINFORCED POLYSTYRENE ADHESIVE



- Suitable for embedding mesh and bonding polystyrene.
- Offers good adhesion to mineral surface and polystyrene.
- Increased resistance to cracking and crazing.
- Suitable for thermal insulation of passive houses and energy efficient buildings

- Water vapour permeable..
- Dedicated for white and grey EPS boards of thickness up to 50 cm.
- Component of the EWI system covered by a 10-YEAR GUARANTEE.

Type	Coverage per 1 m ² [kg/m ²] *	Packaging unit [kg]
BOLIX BETA	Polystyrene board bonding ≥ 4,0 Base coat application ≥ 4,0	25

SETTING ACCELERATORS

BOLIX PW EXPRESS

SETTING AND DRYING RENDER ACCELERATOR



- Enables render application in cold temperatures and increased relative humidity.

- Solvent-free.
- Does not change the performance of the renders BOLIX KA, SI-SIT, SIT.

Type	Coverage [ml]	Packaging unit [ml]
BOLIX PW EXPRESS	210 / 30 kg of render	210

BOLIX PW-S EXPRESS

WINTER ADMIXTURE FOR THE ADHESIVE MORTARS



- Speeds up setting and drying of adhesive mortars: BOLIX U, US, WM (250 g) in cold temperatures and increased humidity.

- Easy dosage control.
- Does not affect product performance.

Type	Coverage [g]	Packaging unit [g]
BOLIX PW-S EXPRESS	250 / 25 kg of adhesive	250

BOLIX REINFORCING MESH

BOLIX HD 158/S

REINFORCING MESH



- To reinforce base coats in External Wall Insulation Systems.
- Optionally, to reinforce levelling compounds applied to mineral surfaces, including adhesives for embedding fibreglass mesh (such as BOLIX U) and the fine-grained repairing and decorative renders BOLIX T-ND and BOLIX T-NDTRAS.

- Reinforcement for the BOLIX thick bituminous coatings to provide a heavy duty waterproofing.
- Additional reinforcement of waterproof membranes such as BOLIX Hydro Duo or BOLIX Hydro.



Type	Gramatura [g/m ²]	Coverage per 1 m ² [m ² /m ²]	Packaging unit [m ²]
BOLIX HD 158/S	158	1,10	50

BOLIX HD 335/P

REINFORCING MESH, ARMORED



- To reinforce base coats in External Wall Insulation Systems.

- To be installed with the reinforcing mesh BOLIX HD 158/S.



Type	Gramatura [g/m ²]	Coverage per 1 m ² [m ² /m ²]	Packaging unit [m ²]
BOLIX HD 335/P	367	1,00	25

PIANY BOLIX

BOLIX ZP

FOAM FOR POLYSTYRENE BOARD INSTALLATION



- High coverage - up to 8 m² from one cartridge, when polystyrene boards are installed on walls.
- Low-pressure.
- Dowelling after only 2h.

- Enables application at temperatures ≥ 0 °C.
- Excellent adhesion to mineral surfaces and to white and grey EPS boards and XPS boards.
- Very good thermal performance.

Type	Coverage [m ²]	Packaging unit [ml]
BOLIX ZP	ca. 8 (above grade insulation) ca. 12 (below grade insulation)	750

BOLIX PM-L

LOW-PRESSURE INSTALLATION FOAM



- High coverage - up to 50 dm³ from one cartridge.
- Low-pressure.
- Enables application at temperatures ≥ -10 °C.

- Excellent adhesion to mineral surfaces and insulation boards.
- Very good thermal and sound insulation properties
- Resistant to fungi and mould growth and to humidity.

Type	Coverage [dm ³]	Packaging unit [ml]
BOLIX PM-L	50	680

RENDERS AND PLASTERS

BOLIX OT

RENDER SCRATCH COAT



- Promotes surface adhesion, provides a key and facilitates the application of cement and cement-lime renders.

- Evens out surface porosity.
- Can be hand or machine applied.

Type	Coverage per 1 m ² [kg/m ²]*	Packaging unit [kg]
BOLIX OT	ca. 3,00 - 4,00 (for application of 50% of the wall surface)	25

BOLIX TCW-L

LIGHTWEIGHT CEMENT AND LIME BASED RENDER



- Offers good adhesion to mineral surfaces.
- Contains perlite - high coverage.
- Easy to work and trowel.
- Water vapour permeable..

- Enhanced weather resistance.
- Hydrophobized.
- Can be hand or machine applied.

Type	Coverage per 1 m ² [kg/m ²]	Packaging unit [kg]
BOLIX TCW-L	ca. 11,0 (per 1 cm of coat thickness)	25

COMPARISON OF RENDERS FOR EWI SYSTEMS

RENDERS	BOLIX MP	BOLIX MP FOR PAINTING	BOLIX KA	BOLIX SI-SIT	BOLIX S	BOLIX SIT	BOLIX SIGMA	BOLIX SIT-P	BOLIX ULTRACLEAN
WATER VAPOUR PERMEABILITY	●●●●	●●●●	●	●●●●	●●●●	●●●●	●●●●	●●●●	●●●●
COLOUR STABILITY (UV resistance)	●●●●*	●●●●*	●	●●●●	●●●●	●●●●	●●●●	●●●●	●●●●
RESISTANCE TO DAMAGE	●	●	●	●●●●	●●●●	●●●●	●●●●	EXTREME	●●●●
HYDROPHOBIC	●	●	●●●●	●●●●	●●●●	●●●●	●●●●	EXTREME	●●●●
SELF-CLEANING EFFECT	●●●●*	●●●●*	●	●●●●	●	●●●●	●●●●	EXTREME	●●●●
RESISTANCE TO ALGAL AND FUNGAL GROWTH	●●	●●	●●	●●	●●●●	●●●●	●●●●	●●●●	EXTREME

* with the paint BOLIX SIL-P

● BASIC LEVEL ●● ENHANCED LEVEL ●●●● HIGH LEVEL EXTREME EXTREME LEVEL

BOLIX MP

WHITE MINERAL RENDER

RECOMMENDED KEY COAT: BOLIX OP



- High vapour permeability.
- Provides increased resistance to algal and fungal growth as well as weather conditions.

- Offers excellent adhesion to mineral surfaces.
- Component of the BOLIX EWI systems with EPS and mineral wool.

Type	Grain size [mm]	Texture	Packaging unit [kg]	Coverage per 1 m ² [kg/m ²]
BOLIX MP KA 15	ca. 1,5	sand finish	25	2,0 - 2,7
BOLIX MP KA 20	ca. 2,0	sand finish		2,5 - 3,2
BOLIX MP KA 30	ca. 3,0	sand finish		3,2 - 4,0
BOLIX MP R 25**	ca. 2,5	worm finish		3,0 - 3,5

BOLIX MP DM

MINERAL RENDER

RECOMMENDED KEY COAT: BOLIX OP



- High vapour permeability.
- Provides increased resistance to algal and fungal growth as well as weather conditions.

- Can be hand or machine applied.
- Component of the BOLIX EWI systems with EPS and mineral wool.

Type	Grain size [mm]	Texture	Packaging unit [kg]	Coverage per 1 m ² [kg/m ²]
BOLIX MP KA 15 DO MALOWANIA	ca. 1,5	sand finish	25	2,0 - 2,7

BOLIX

ACRYLIC RENDER

RECOMMENDED KEY COAT: BOLIX OP



- Enhanced weather resistance.
- Contains algal and fungal growth inhibitors.
- Provides low porosity and high flexibility.
- Ensures high colour stability in a wide range of colours.

- Very easy to work and trowel.
- Can be hand or machine applied.
- Component of the BOLIX EWI systems with EPS.

Type	Grain size [mm]	Texture	Packaging unit [kg]	Coverage per 1 m ² [kg/m ²]
BOLIX KA 1**	1,0	sand finish	30	1,7 - 2,2
BOLIX KA 1,5	1,5	sand finish		2,2 - 2,8
BOLIX KA	2,0	sand finish		2,8 - 3,4
BOLIX R**	2,5	worm finish		3,0 - 3,5



OPTION WITH BIO COMPLEX - ANTIMICROBIAL RENDER COATING. INCREASED RESISTANCE TO MICROBIAL GROWTH AND WEATHER CONDITIONS.

THIN-COAT RENDERS

BOLIX TM

MOSAIC RENDER

RECOMMENDED KEY COAT: BOLIX OP



- Comes in 340 colours.
- Excellent resistance to abrasion and mechanical damage.
- Enhanced weather resistance.
- Easy to keep clean.
- Component of the BOLIX EWI systems with EPS.

Type	Grain size [mm]	Packaging unit [kg]	Coverage per 1 m ² [kg/m ²]
BOLIX TM	ca. 1,0	30 15	2,0 - 3,0
	ca. 1,5	30 15	3,0 - 4,0

BOLIX SI-SIT

SILICONE AND SILICATE RENDER

RECOMMENDED KEY COAT: BOLIX SIG COLOUR



REKOMENDOWNY DLA
BOLIX
Passive Therm

- Provides low water absorption and high flexibility.
- Offers increased resistance to algal and fungal growth as well as weather conditions.
- High resistance to impact and thermal stress.
- High colour stability.
- Very easy to work and trowel.
- For hand and machine application.
- Component of the BOLIX EWI systems with EPS and XPS and mineral wool.

Type	Grain size [mm]	Texture	Packaging unit [kg]	Coverage per 1 m ² [kg/m ²]
BOLIX SI-SIT 1,5 KA	1,5	sand finish	30	2,2 - 2,8
BOLIX SI-SIT 2 KA	2,0	sand finish		2,8 - 3,4

BOLIX S

SILICATE RENDER

RECOMMENDED KEY COAT: BOLIX SIG COLOUR



- High vapour permeability.
- Offers excellent adhesion to mineral surfaces.
- Provides increased resistance to algal and fungal growth as well as weather conditions.
- Offered in a wide range of colours.
- Component of the BOLIX EWI systems with EPS and mineral wool.

Type	Grain size [mm]	Texture	Packaging unit [kg]	Coverage per 1 m ² [kg/m ²]
BOLIX S 1,5 KA	1,5	sand finish	30	2,5 - 3,0
BOLIX S 2 KA	2,0	sand finish		3,0 - 3,5

BOLIX ULTRACLEAN

SILICONE RENDER WITH ULTRACLEAN TECHNOLOGY

RECOMMENDED KEY COAT: BOLIX SG COLOUR



- Highly vapour permeable.
- Offers excellent adhesion to mineral surfaces..
- Ensures increased resistance to algal and fungal growth and high weather and UV resistance
- Comes in a wide range of colours.
- Component of the BOLIX EWI systems with EPS and XPS and mineral wool.

Type	Grain size [mm]	Texture	Packaging unit [kg]	Coverage per 1 m ² [kg/m ²]
BOLIX ULTRACLEAN	1,5	sand finish	30	2,2 - 2,6

BOLIX SIT

SILICONE RENDER

RECOMMENDED KEY COAT: BOLIX SIG COLOUR

LAUREAT KONKURSU



TERAZ POLSKA



REKOMENDOWNY DLA
BOLIX
Passive Therm

- High weather and UV resistance.
- High resistance to impact and thermal stress.
- Self-cleaning properties - due to low wettability of the rendering and its hydrophobic properties,
- High colour stability.
- Water vapour permeable..
- Increased resistance to algal and fungal growth.
- Component of the BOLIX EWI systems with EPS and XPS and mineral wool.

Type	Grain size [mm]	Texture	Packaging unit [kg]	Coverage per 1 m ² [kg/m ²]
BOLIX SIT 0,3 KA**	0,3	sand finish	30	1,5 - 2,5
BOLIX SIT 1 KA**	1,0	sand finish		1,7 - 2,2
BOLIX SIT 1,5 KA	1,5	sand finish		2,2 - 2,8
BOLIX SIT 2 KA	2,0	sand finish		2,8 - 3,4
BOLIX SIT 2 R**	2,5	worm finish		3,0 - 3,5

BOLIX SIGMA

SILICONE RENDER OF INCREASED FLEXIBILITY

RECOMMENDED KEY COAT: BOLIX EPSILON



- Micro-fibre reinforced - ensures increased resistance to cracking and scratching.
- Offers high weather and UV resistance (high colour stability).
- Self-cleaning properties - due to low wettability of the rendering and its hydrophobic properties.
- Highly vapour permeable.

- Ensures increased resistance to algal and fungal growth.
- Provides high resistance to impact and thermal stress.
- Component of the EWI system with the trade name Silicone System, covered by a 10-YEAR GUARANTEE.

Type	Grain size [mm]	Texture	Packaging unit [kg]	Coverage per 1 m ² [kg/m ²]
BOLIX SIGMA 1,5 KA	1,5	sand finish	30	2,2 - 2,8
BOLIX SIGMA 2 KA	2,0			2,6 - 3,2

BOLIX SIT-P

SILICONE RENDER WITH WATER BEADING EFFECT

RECOMMENDED KEY COAT: BOLIX SIG COLOUR



- Offers the highest impact resistance (even above 150 J in the HD EXTREME SYSTEM).
- Self-cleaning properties, water beading or lotus effect - due to low wettability of the rendering and its hydrophobic properties.
- Provides high resistance to algal and fungal growth as well as weather conditions.
- Micro fibres reinforced.

- Resistant to: UV radiation (contains UV absorbers) as well as thermal stress and cracking.
- Super flexible and water repellent.
- Component of the BOLIX EWI systems with EPS and XPS and mineral wool.

Type	Grain size [mm]	Texture	Packaging unit [kg]	Coverage per 1 m ² [kg/m ²]
BOLIX SIT-P 1,5KA	1,5	sand finish	30	2,2 - 2,8
BOLIX SIT-P 2 KA	2,0			2,6 - 3,2

BOLIX COMPLEX ANTIMICROBIAL PROTECTION

BOLIX GLO

ORGANIC GROWTH REMOVER



- It effectively combats most of algae, fungi, lichen and moss that may grow on building envelope.
- Easy to apply - hand or spray.

- Covered by the recommendation of the Building Research Institute (ITB) for its renovation features and antimicrobial protection.

Type	Coverage per 1 m ² [l/m ²]	Packaging unit [l]
BOLIX GLO COMPLEX	0,035 - 0,065	1
	(will vary with the surface porosity and texture)	5

BOLIX PRO

ANTIMICROBIAL WALL AND ROOF COATING



- High resistance to algal and fungal growth - BOLIX Complex antimicrobial protection; covered by the recommendation of the Building Research Institute (ITB) for its renovation features and antimicrobial protection.
- Enhanced weather resistance.

- Easy to apply - by hand or spray.
- Forms a clear film.
- Low wettability of the coating
- Reduces dust settling and build-up on the treated surface.

Type	Coverage per 1 m ² [l/m ²]	Packaging unit [l]
BOLIX PRO COMPLEX	0,18 - 0,25	5
	(smooth and non-porous surface)	
	0,30 - 0,40	
	(rough surface)	

BOLIX PROCLEAN

WALL COATING PREVENTING MICROBIAL GROWTH AND DIRT BUILD-UP



- Protected surfaces are less prone to dirt or grime build-up.
- High resistance to algal and fungal growth
- Enhanced weather resistance.

- Easy to apply - hand or spray.
- Forms a clear film.

Type	Coverage per 1 m ² [l/m ²]	Packaging unit [l]
BOLIX PROCLEAN	0,20 - 0,40	20

EXTERIOR WALL PAINTS

COMPARISON OF WALL PAINTS

EXTERIOR WALL PAINTS		BOLIX AZ	BOLIX AZ COMPLEX	BOLIX SZ	BOLIX SIL	BOLIX SIL COMPLEX	BOLIX SIL-P	BOLIX GAMMA	BOLIX SIL ULTRACLEAN
PROPERTIES	RESISTANCE TO ALGAL AND FUNGAL GROWTH	● ●	EXTREME	● ● ● ●	● ● ● ●	EXTREME	EXTREME	EXTREME	EXTREME
	COLOUR STABILITY (UV resistance)	● ●	● ●	● ● ● ●	● ● ● ●	● ● ● ●	EXTREME	EXTREME	EXTREME
	WEATHER RESISTANCE	● ●	● ●	● ●	● ● ● ●	● ● ● ●	EXTREME	EXTREME	EXTREME
	RESISTANCE TO EFFLORESCENCE	● ●	● ●	● ● ● ●	● ● ● ●	● ● ● ●	● ● ● ●	● ● ● ●	● ● ● ●
	WATER VAPOUR PERMEABILITY	●	●	● ● ● ●	● ● ● ●	● ● ● ●	● ● ● ●	● ● ● ●	● ● ● ●
	HYDROPHOBIC PROPERTIES	●	●	● ●	● ● ● ●	● ● ● ●	● ● ● ●	EXTREME	EXTREME

● BASIC LEVEL ● ● ENHANCED LEVEL ● ● ● ● HIGH LEVEL **EXTREME** EXTREME LEVEL

BOLIX AZ

ACRYLIC PAINT WITH UV ABSORBERS

RECOMMENDED PRIMER: BOLIX N



- Increased resistance to algal and fungal growth.
- Offers increased resistance to weather conditions and UV radiation - contains UV absorbers.

- Forms additional barrier - calcium ions blockers i.e. salt inhibitors.
- Ensures high colour stability and comes in a wide range of colours.
- Component of the BOLIX EWI systems with EPS.

Type	Colour	Average coverage per 1 m ² [l/m ²]	Packaging unit [l]
BOLIX AZ	white	0,18 – 0,25 (smooth and non-porous surface)	18
			10
	basic	0,30 – 0,40 (rough surface)	5
			18
			10
			5



OPTION WITH BIO COMPLEX - ANTIMICROBIAL PAINT COATING. INCREASED RESISTANCE TO MICROBIAL GROWTH AND WEATHER CONDITIONS

BOLIX SZ

SILICATE PAINT

RECOMMENDED PRIMER: BOLIX SG



- Highly vapour permeable.
- Component of the BOLIX EWI systems with EPS and mineral wool batts.

- Offers increased resistance to weather conditions as well as algal and fungal growth (covered by the ITB Recommendation in the scope of renovation and anti-microbial protection).

Type	Colour	Average coverage per 1 m ² [l/m ²]	Packaging unit [l]
BOLIX SZ	white	0,18 – 0,25 (smooth and non-porous surface)	18
			10
	basic	0,30 – 0,40 (rough surface)	18
			10

BOLIX SIL

SILICONE PAINT WITH UV ABSORBERS

RECOMMENDED PRIMER: BOLIX SIG



REKOMENDOWNY DLA
BOLIX
Passive Therm

- Provides high resistance to weather conditions and UV radiation - contains UV absorbers.
- Offers high hydrophobic properties (due to low wettability of the paint coat) and water vapour permeability.
- Provides high colour stability.

- Offers increased resistance to: algal and fungal growth as well as salt efflorescence (contains calcium ions blockers i.e. salt inhibitors).
- Component of the BOLIX EWI systems with EPS and mineral wool batts.

Type	Colour	Average coverage per 1 m ² [l/m ²]	Packaging unit [l]
BOLIX SIL	white	0,18 – 0,25 (smooth and non-porous surface)	18
			10
	basic	0,30 – 0,40 (rough surface)	5
			18
			10
			5



OPTION WITH BIO COMPLEX - ANTIMICROBIAL PAINT COATING. INCREASED RESISTANCE TO MICROBIAL GROWTH AND WEATHER CONDITIONS

BOLIX GAMMA SILICONE PAINT OF ENHANCED RESISTANCE TO ORGANIC GROWTH

RECOMMENDED PRIMER: BOLIX PI



- High resistance to weather conditions and UV radiation - contains UV absorbers.
- Highly hydrophobic (due to low wettability of the paint coat) and water vapour permeable.
- Increased resistance to algal and fungal growth as well as salt efflorescence (contains calcium ions blockers i.e. salt inhibitors).

- High colour stability and a wide range of colours.
- Painting of the mineral renders BOLIX DELTA after only 4 days from application.
- Component of the EWI system with the trade name Mineral System, covered by a 10-YEAR GUARANTEE.

Type	Average coverage per 1 m ² [l/m ²]	Packaging unit [l]
BOLIX GAMMA**	0,18 – 0,25 (smooth and non-porous surface)	18
	0,30 – 0,40 (rough surface)	10

BOLIX SIL-P SILICONE PAINT WITH WATER BEADING EFFECT

RECOMMENDED PRIMER: BOLIX SIG



- High resistance to weather conditions, algal and fungal growth and UV radiation (contains UV absorbers).
- Highly hydrophobic (self-cleaning, water beading effect) and water vapour permeable.
- Increased resistance to efflorescence.

- High colour stability, comes in a wide range of colours.
- -- Component of the BOLIX EWI systems with EPS and XPS and mineral wool, including BOLIX HD.

Type	Coverage per 1 m ² [l/m ²]	Packaging unit [l]
BOLIX SIL-P	0,18 – 0,25 (smooth and non-porous surface)	18
	0,30 – 0,40 (rough surface)	10

BOLIX SIL-RN SILICONE PAINT FOR SCRATCHED RENDER COATS

RECOMMENDED PRIMER: BOLIX SIG



- High hydrophobic properties and colour stability.
- Increased resistance to weather conditions, algal and fungal growth and UV radiation (contains UV absorbers).
- Build-in system of calcium ions blockers i.e. salt inhibitors.
- Highly flexible

- Bridges and fills fine cracks, prevents micro-cracking of render coats.
- Creates a flexible coating even in low temperatures.
- Water vapour permeable.
- Excellent adhesion to the substrate.

Type	Average coverage per 1 m ² [l/m ²]	Packaging unit [l]
BOLIX SIL-RN	0,18 – 0,25 (smooth and non-porous surface)	10
	0,30 – 0,40 (rough surface)	

BOLIX SIL ULTRACLEAN SILICONE PAINT WITH ULTRACLEAN TECHNOLOGY

RECOMMENDED PRIMER: BOLIX SIG



- Ultraclean Technology - the paint coating does not attract dirt and dust, so we can enjoy a clean and fresh facade for a relatively longer period of time than after using standard solutions.

- High: Water vapour permeable, hydrophobic properties and colour stability.
- High resistance to weather conditions and UV radiation (contains UV absorbers).
- Increased resistance to algal and fungal growth.

Type	Average coverage per 1 m ² [l/m ²]	Packaging unit [l]
BOLIX SIL ULTRACLEAN	0,18 – 0,25 (smooth and non-porous surface)	10
	0,30 – 0,40 (rough surface)	



** Ask if available. Made on special order and not available in the service Bolix Express.

KEY COATS

BOLIX OP

KEY COAT FOR ACRYLIC, MINERAL AND MOSAIC RENDERS



- Facilitates render application - contains quartz powder.
- Binds and strengthens the surface.
- Suppresses dust formation and evens out surface porosity.
- Protects the primed surface against adverse effect of moisture.

- Blocks out stains in base coats and prevents from bleeding through to the top coats.
- Prevents surface colour from showing through the render coat.
- Component of the BOLIX EWI systems with EPS and mineral wool batts.

Type	Average coverage 1 m ² [kg/m ²]	Packaging unit [kg]
BOLIX OP	0,25 - 0,40	25
		10
		5

BOLIX SG COLOUR

TINTABLE KEY COAT FOR SILICATE RENDERS



- Facilitates render application - contains quartz powder.
- Binds and strengthens the surface.
- Suppresses dust formation and evens out surface porosity.
- Protects the primed surface against adverse effect of moisture.

- Blocks out stains in base coats and prevents from bleeding through to the top coats.
- Prevents surface colour from showing through the render coat.
- Component of the BOLIX EWI systems with EPS and mineral wool batts.

Type	Average coverage 1 m ² [kg/m ²]	Packaging unit [kg]
BOLIX SG COLOUR	0,25 - 0,40	25

BOLIX SIG COLOUR

KEY COAT FOR SILICONE AND SILICONE-SILICATE RENDERS



- Facilitates render application - contains quartz powder.
- Binds and strengthens the surface.
- Suppresses dust formation and evens out surface porosity.
- Protects the primed surface against adverse effect of moisture.

- Blocks out stains in base coats and prevents from bleeding through to the top coats.
- Prevents surface colour from showing through the render coat.
- Component of the BOLIX EWI systems with EPS and mineral wool batts.



Type	Average coverage 1 m ² [kg/m ²]	Packaging unit [kg]
BOLIX SIG COLOUR	0,25 - 0,40	25
		5

BOLIX EPSILON

KEY COAT FOR THE SILICONE RENDER BOLIX SIGMA



- Facilitates render application - contains quartz powder.
- Binds and strengthens the surface.
- Suppresses dust formation and evens out surface porosity.
- Protects the primed surface against adverse effect of moisture.

- Blocks out stains in base coats and prevents from bleeding through to the top coats.
- Prevents surface colour from showing through the render coat.
- Component of the BOLIX EWI systems with EPS covered by a 10-YEAR GUARANTEE.

Type	Average coverage 1 m ² [kg/m ²]	Packaging unit [kg]
BOLIX EPSILON	0,25 - 0,35	20

BOLIX SG CLEAR PRIMER FOR SILICATE FACADE PAINTS



- Binds and strengthens the surface.
- Suppresses dust formation and evens out surface porosity.
- Protects the primed surface against adverse effect of moisture.
- Blocks out stains in base coats and prevents from bleeding through to the top coats.
- Component of the BOLIX EWI systems with EPS and mineral wool batts.

Type	Colour	Average coverage per 1 m ² [kg/m ²]	Packaging unit [kg]
BOLIX SG	clear	0,10 - 0,20	20

BOLIX SIG CLEAR PRIMER FOR SILICONE FACADE PAINTS



- Binds and strengthens the surface.
- Suppresses dust formation and evens out surface porosity.
- Protects the primed surface against adverse effect of moisture.
- Blocks out stains in base coats and prevents from bleeding through to the top coats.
- Component of the BOLIX EWI systems with EPS and mineral wool batts.

Type	Colour	Average coverage per 1 m ² [kg/m ²]	Packaging unit [kg]
BOLIX SIG	clear	0,10 - 0,20	20 5

BOLIX SIG COMPLEX PRIMER FOR SILICONE FACADE PAINTS



- Binds and strengthens the surface.
- Suppresses dust formation and evens out surface porosity.
- Protects the primed surface against adverse effect of moisture.
- Blocks out stains in base coats and prevents from bleeding through to the top coats.
- Contains coating biocides that extend and support the microbiological protection of silicone paint coatings.

Type	Colour	Average coverage per 1 m ² [kg/m ²]	Packaging unit [kg]
BOLIX SIG COMPLEX	clear	0,10 - 0,20	5

BOLIX PI CLEAR PRIMER FOR THE SILICONE FACADE PAINT BOLIX GAMMA



- Binds and strengthens the surface.
- Suppresses dust formation and evens out surface porosity.
- Protects the primed surface against adverse effect of moisture.
- Blocks out stains in base coats and prevents from bleeding through to the top coats.
- Stanowi jeden z elementów zestawu materiałów do wykonywania ociepleń ścian zewnętrznych o nazwie handlowej System Mineralny, objęty programem 10 LAT GWARANCJI.

Type	Colour	Average coverage per 1 m ² [kg/m ²]	Packaging unit [kg]
BOLIX PI**	clear	0,10 - 0,20	20 5

BOLIX T PRIMER & SURFACE STRENGTHENER



- Perfectly seals off and strengthens the primed surface.
- Improves adhesion of adhesives to mineral substrates.
- Facilitates bonding and fixing of insulation material and ceramic or stone tiles.
- Evens out the setting and drying process of adhesive coatings.
- Suppresses dust formation and evens out surface porosity.
- Protects the primed surface against adverse effect of moisture.
- Solvent-free.

Type	Average coverage per 1 m ² [kg/m ²]	Packaging unit [kg]
BOLIX T	0,10 - 0,30	20 5

PRIMERS AND SEALERS

BOLIX ULTRAGRUNT UNIVERSAL INTERIOR PAINT PRIMER



- Binds and strengthens the surface.
- Promotes adhesion and provides a key for subsequent coatings.
- Redukuje pylistość i ujednolica chłonność podłoża.
- Seals and blocks out stains in base coats and prevents from bleeding through to the top coat.
- Solvent-free and fast-drying.

Type	Average coverage per 1 m ² [kg/m ²]	Packaging unit [kg]
BOLIX ULTRAGRUNT	0,10 - 0,50	10 5

BOLIX BETOGRUNT PRIMER FOR CRITICAL SUBSTRATES



- Perfectly seals off and strengthens the primed surface.
- Forms a bonding bridge, provides a key - its quartz content makes it perfect for smooth and non-porous surfaces.
- Improves adhesion of adhesives to mineral substrates.
- Evens out the setting and drying process of adhesive coatings.
- Facilitates bonding and fixing of insulation material and ceramic or stone tiles.
- Evens out surface porosity.
- Protects the primed surface against adverse effect of moisture.
- Solvent-free and fast-drying.

Type	Average coverage per 1 m ² [kg/m ²]	Packaging unit [kg]
BOLIX BETOGRUNT	0,25 - 0,40 (depending on the substrate)	14 7

BOLIX O PRIMER



- Suppresses dust formation and evens out surface porosity.
- Protects the primed surface against adverse effect of moisture.

Type	Average coverage per 1 m ² [kg/m ²]	Packaging unit [kg]
BOLIX O	0,10 - 0,15	20

BOLIX N DEEP PENETRATING SEALER FOR POROUS AND CHALKY SURFACES AND PRIOR ACRYLIC FACADE PAINT APPLICATION



- Seals off and strengthens the surface.
- Dedicated for highly porous surfaces.
- Promotes adhesion and provides a key for subsequent coatings.
- Suppresses dust formation and evens out surface porosity.
- Protects the primed surface against adverse effect of moisture.
- Seals and blocks out stains in base coats and prevents from bleeding through to the top coat.
- Solvent-free.

Type	Average coverage per 1 m ² [kg/m ²]	Packaging unit [kg]
BOLIX N	0,10 - 0,20	10 5

BOLIX OM ACRYLIC SEALER



- Seals off and strengthens the treated surface and improves the visual effect.
- Suppresses dust formation and evens out surface porosity.
- Protects the sealed surface against adverse effect of moisture penetration.
- Minimises staining and efflorescence or lime bloom development on the treated surface.
- Solvent free.

Type	Average coverage per 1 m ² [kg/m ²]	Packaging unit [kg]
BOLIX OM	0,10 - 0,30	5

BOLIX BIK

SILICONE WATER REPELLENT SEALER



- Reduces water absorption.
- Does not leave a film.
- Highly vapour permeable.
- Deep-penetrating.
- Solvent-free and alkali-resistant.

- Does not alter the colour of the treated surface or give a glossy finish to it.
- Protects from dirt build-up, minimises staining and efflorescence development.
- Provides increased weather resistance to the treated surface.
- Forms an antimicrobial coating that inhibits the organic growth on the treated surface.

Type	Average coverage per 1 m ² [kg/m ²]	Packaging unit [kg]
BOLIX BIK	0,10 - 0,50	1 5

BOLIX BW

RESIDUE REMOVER, CONCENTRATE



- Biodegradable and easy to use.

- Removes calcium, lime and rust deposits.

Type	Average coverage per 1 m ² [kg/m ²]	Packaging unit [kg]
BOLIX BW**	It depends on the structure of the substrate and the dilution ratio	1

BOLIX CLN

CLEANER, CONCENTRATE



- Highly effective - "active foam".
- Covered by the recommendation of the Building Research Institute (ITB) for its renovation features and antimicrobial protection.

- Enables easy application - by hand or spray.
- Biodegradable - safe to use.
- Water dilutable concentrate.

Type	Average coverage per 1 m ² [kg/m ²]	Packaging unit [kg]
BOLIX CLN	0,035 - 0,080 (depending on degree of soiling)	1 5

SKIM COATS/JOINT COMPOUNDS

BOLIX M10 THIN-BED MORTAR FOR SILICATE AND CONCRETE BLOCKS



- Compressive strength ≥ 10 MPa.
- Prevents thermal bridging.
- Water vapour permeable.
- No substrate wetting necessary prior to render application.
- High yield, easy to apply.

Type	Colour	Average coverage per 1 m ² [kg/m ²]	Packaging unit [kg]
BOLIX M10	white	ca. 4,0 (for a 3 mm joint and wall thickness of 24 cm)	25
	grey		

BOLIX KL BEDDING AND POINTING MORTAR WITH TRASS FOR CLINKER AND STONE



- Contains trass cement.
- Easy to prepare, work and apply.
- Enhanced resistance to lime bloom.
- Water and frost resistant after setting, vapour permeable.

Type	Type Colour	Average coverage per 1 m ² [kg/m ²]	Packaging unit [kg]
BOLIX KL	anthracite	Depending on the joint width*: - 10 mm ca. 37 - 12 mm ca. 45 - 15 mm ca. 55 * When building a full brick wall 12 cm wide	25
	brown		
	dark brown **		
	dark grey		
	pewter		
	sand **		
	grey		
sand yellow **			
	white*		

* BOLIX KL in white does not contain trass cement

BOLIX SN20 SELF-LEVELLING INTERIOR CEMENT MORTAR



- Can be hand or machine applied.
- Very good self-levelling properties.
- Not suitable for underfloor heating.
- Optimal thickness of 2-20 mm.

Type	Average coverage per 1 m ² [kg/m ²]	Packaging unit [kg]
BOLIX SN20**	ca. 1,6 (per each 1 mm of thickness)	25

BOLIX W BEDDING AND REPAIR MORTAR



- Frost resistant.
- Excellent adhesion to substrates and low linear shrinkage.
- Formulated to fill gaps and level irregularities between 5 and 15 mm
- Used for bedding cellular concrete blocks and units for bed joints between 5 mm and 15 mm.

Type	Average coverage per 1 m ² [kg/m ²]	Packaging unit [kg]
BOLIX W	ca. 1,9 (per each 1 mm of thickness)	25

BOLIX SP WHITE GYPSUM JOINT COMPOUND



- Easy to work, apply and sand.
- Non-shrinking.
- Excellent adhesion to the substrate.
- Can be hand or machine applied.

Type	Average coverage per 1 m ² [kg/m ²]	Packaging unit [kg]
BOLIX SP	ca. 0,9 (per each 1 mm of thickness)	20

** Ask if available. Made on special order and not available in the service Bolix Express.



FACADE DECORATIONS **BOLIX DESIGN COLLECTION**



DESIGN COLLECTION EFFECTS/PANELS

BOLIX WOOD EFFECT PANEL

A solution, which combines the timeless appeal of wooden decorative elements with reliability and robustness of modern finishes. It will give a unique effect of wood board to your walls. With BOLIX WOOD you no longer have to worry about wood treatment and maintenance. The method of installation, flexibility and weight make it possible to quickly and easily obtain a unique board effect on the façade in the selected color.



MAHOGANY (BWD P 55)



DARK OAK (BWD P 54)



MEDIUM BROWN (BWD P 57)



NUT (BWD P 56)



GOLDEN OAK (BWD P 51)



GREY (BWD P 59)



EBONY (BWD P 60)



NATURAL OAK (BWD P 52)



CREME (BWD P 58)



WHITE OAK (BWD P 53)

COMPONENTS	NAME OF PRODUCT	PAGE NO.	UNIT	COVERAGE [UoM/m ²]	RANGE [UoM/m ²]
KEY COAT	BOLIX OP	26	kg	0,33	0,25 - 0,40
DISPERSION ADHESIVE	BOLIX KD PANEL	41	kg	2,80	2,80
BOLIX WOOD EFFECT PANEL	BOLIX WOOD EFFECT PANEL	40	pcs.	3	3
FINISH GLAZE	BOLIX DECOLAZUR	38	l	0,12	0,12

BOLIX RIBBED EFFECT PANEL

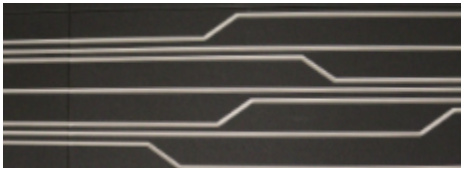
BOLIX RIBBED EFFECT PANEL is a panel designed to give a corrugated / grooved or rib effect on building exterior. The corrugated finish is difficult to produce, but the effect is very impressive, once completed. To facilitate the process, BOLIX has developed BOLIX RIBBED EFFECT PANELS that are easy and fast to install and can be cut to size.



COMPONENTS	NAME OF PRODUCT	PAGE NO.	UNIT	COVERAGE [UoM/m ²]	RANGE [UoM/m ²]
PRIMER	BOLIX OP	26	kg	0,33	0,25 - 0,40
ADHESIVE	BOLIX KD PANEL	41	kg	2,80	2,80
BOLIX RIBBED EFFECT PANEL	BOLIX RIBBED EFFECT PANEL	40	pcs.	2	2
EXTERIOR PAINT	BOLIX SIL-RN	25	l	0,25	0,18-0,40

BOLIX 3D EFFECT PANEL

BOLIX 3D EFFECT PANEL is a panel designed to produce three dimensional effects, including custom designs, on interior and exterior walls of new and existing buildings as well as in interiors .



GEOMETRY PANEL PATTERN 1



GEOMETRY PANEL PATTERN 2



WAVE PANEL PATTERN 3

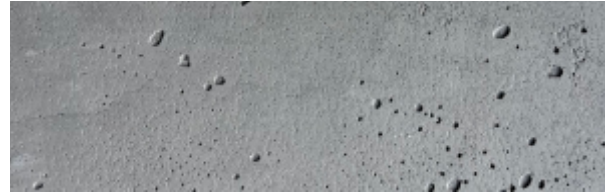
COMPONENTS	NAME OF PRODUCT	PAGE NO.	UNIT	COVERAGE [UoM/m ²]	RANGE [UoM/m ²]
KEY COAT	BOLIX OP	26	kg	0,33	0,25 - 0,40
ADHESIVE	BOLIX KD CLEAR PANEL	41	kg	2,40	2,40
3D PANELS	BOLIX 3D EFFECT PANEL	40	pcs.	2	2
SEALER	BOLIX OM	28	kg	0,20	0,10-0,30

BOLIX CONCRETE EFFECT PANEL

BOLIX CONCRETE EFFECT PANEL is a panel dedicated to creating decorative effects imitating formwork concrete on the external walls of existing and newly erected buildings, as well as inside the rooms. BOLIX CONCRETE EFFECT PANEL will be perfect for modern, minimalist and industrial arrangements, creating a unique visual effect. Visible streaks and discolorations emphasize the natural character of concrete.



LIGHT GREY

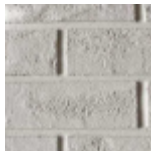


NATURAL CEMENT

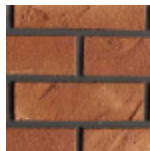
COMPONENTS	NAME OF PRODUCT	PAGE NO.	UNIT	COVERAGE [UoM/m ²]	RANGE [UoM/m ²]
KEY COAT	BOLIX OP	26	kg	0,33	0,25 - 0,40
ADHESIVE	BOLIX KD PANEL	41	kg	2,40	2,40
BOLIX CONCRETE EFFECT PANEL	BOLIX CONCRETE EFFECT PANEL	40	pcs.	2	2
FINISH GLAZE	BOLIX DECO LAZUR	38	l	0,15	ca. 0,15

BOLIX BQS

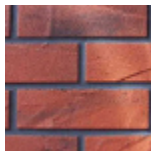
BOLIX BQS flexible bricks developed by us is a state-of-the-art solution to give a touch of originality to your exterior. Brick slips look great both on traditional or vintage design buildings, but they are more and more often an inspiration for modern minimalist designs.



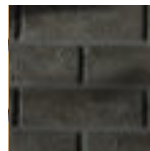
WHITE ALABASTER (EQ 170)
/ GROUT WHITE



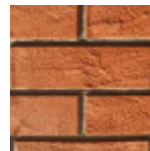
WARM COPPER (EQ 10)
/ GROUT DARK



RUBY STONE (EQ 90)
/ GROUT DARK



BLACK BASALT (EQ 130)
/ GROUT DARK



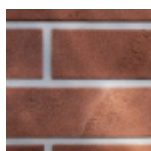
GINGER ROCK (EQ 50)
/ GROUT NATURAL



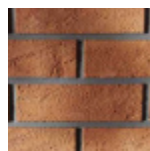
DARK GRANITE (EQ110)
/ GROUT GREY



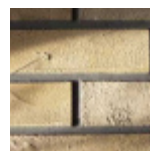
GREY MARBLE (EQ 150)
/ GROUT GREY



BROWN RUBY (EQ 70)
/ GROUT GREY



ORANGE SAND (EQ 30)
/ GROUT NATURAL



NATURAL TRAVERTINE (EQ 190)
/ GROUT NATURAL



COMPONENTS	NAME OF PRODUCT	PAGE NO.	UNIT	COVERAGE [UoM/m ²]	RANGE [UoM/m ²]
KEY COAT	BOLIX OP	26	kg	0,33	0,25 - 0,40
DISPRESSION COMPOUND	BOLIX BQB	41	kg	2,40	2,40
ELASTIC BRICK SLIP	BOLIX BQS	41	pcs.	48	2
MASS	BOLIX BQS MASS	41	kg	ca. 15÷20 g/m.b.	15÷20 g/m.b.

DESIGN COLLECTION EFFECTS

BOLIX WOOD

A solution, which combines the timeless appeal of wooden decorative elements with reliability and robustness of modern finishes. It will give a unique effect of wood board to your walls. With BOLIX WOOD you no longer have to worry about wood treatment and maintenance. And yet, you can enjoy a wood board finish in a colour you like. BOLIX WOOD is offered in eight colours - from light to very dark wood colour. It comes as BOLIX WOOD STAMP or BOLIX WOOD TR.

BOLIX WOOD STAMP



Golden Oak / BWD S 51



Natural Oak / BWD S 52



White Oak / BWD S 53



Dark Oak / BWD S 54



Ebony/ BWD S 60



Mahogany / BWD S 55



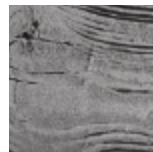
Nut / BWD S 56



Medium Brown / BWD S 57



Cream / BWD S 58



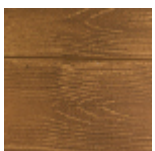
Grey/ BWD S 59



COMPONENTS	NAME OF PRODUCT	PAGE NO.	UNIT	COVERAGE [UoM/m ²]	RANGE [UoM/m ²]
PRIMER	BOLIX T	27	kg	0,20	0,10 ÷ 0,30
RENDER	BOLIX WS	39	kg	4,50	ca. 1,5 (na 1 mm)
PRIMER	BOLIX T	27	kg	0,20	0,10 ÷ 0,30
FINISH GLAZE	BOLIX DECO LAZUR	38	l	0,15	ca. 0,15
SEALER*	BOLIX OM	28	kg	0,20	0,10 ÷ 0,30

* optional

BOLIX WOOD TR



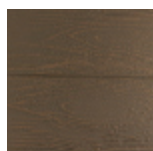
Golden Oak / BWD TR 51



Natural Oak / BWD TR 52



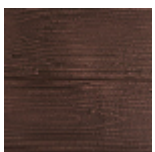
White Oak / BWD TR 53



Dark Oak / BWD TR 54



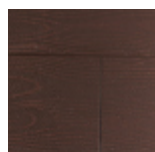
Ebony/ BWD TR 60



Mahogany / BWD TR 55



Nut / BWD TR 56



Medium Brown / BWD TR 57



Cream / BWD TR 58



Grey/ BWD TR 59



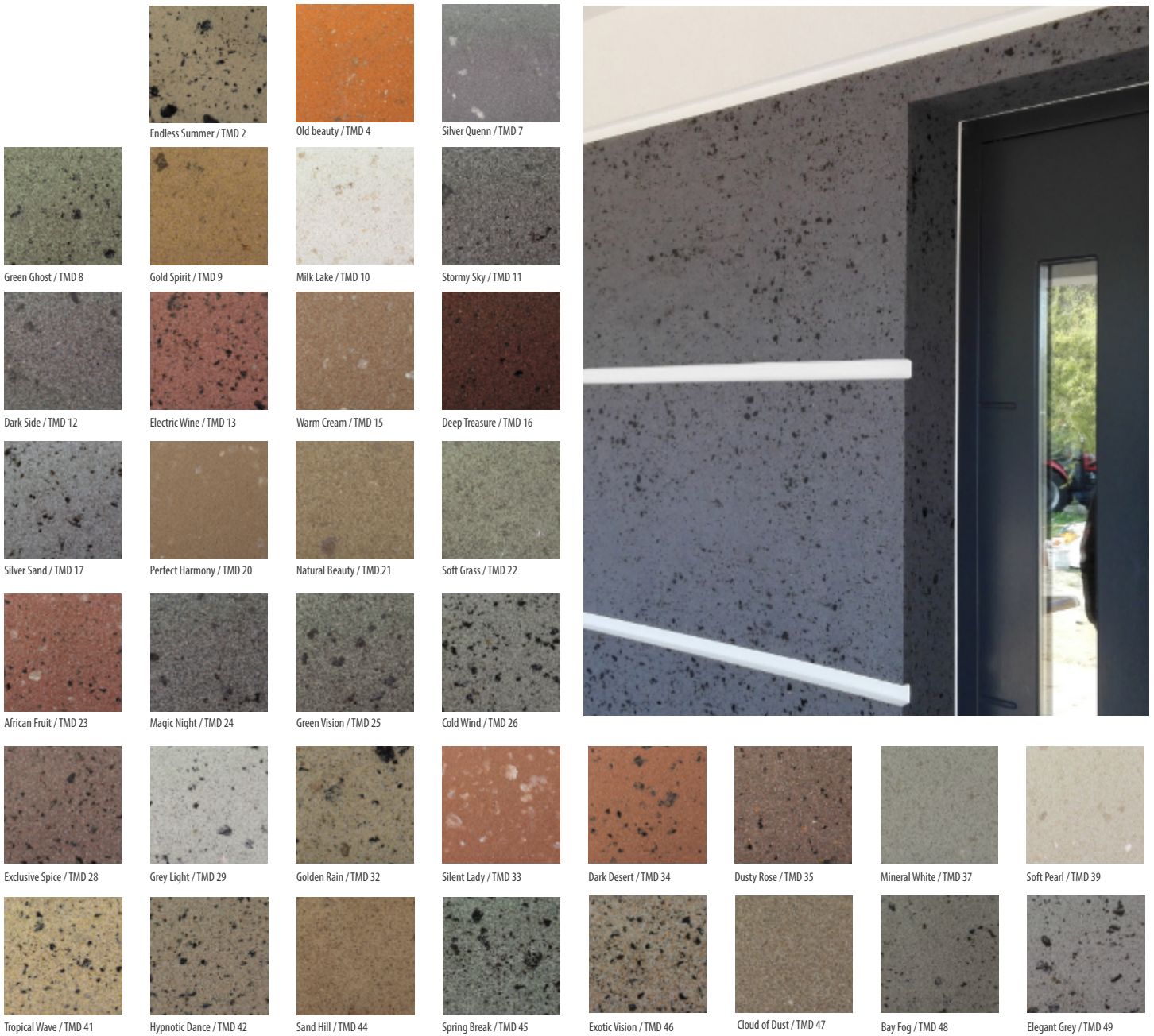
COMPONENTS	NAME OF PRODUCT	PAGE NO.	UNIT	COVERAGE [UoM/m ²]	RANGE [UoM/m ²]
KEY COAT	BOLIX OP	26	kg	0,33	0,25 ÷ 0,40
RENDER	BOLIX TR	39	kg	1,75	1,75 (thickness 1 mm)
FINISH GLAZE	BOLIX DECO LAZUR	38	l	0,15	ca. 0,15
SEALER*	BOLIX OM	28	kg	0,20	0,10 ÷ 0,30

* optional

The colours presented are printed, therefore take them as a reference guide only. The above calculation is for reference only. For the calculation average coverage of the system components was taken.

BOLIX DECOMIKA

The DECOMIKA effect has been specially developed for those who love expressive visual effects. Render finish imitating stone is filled with mica particles, which give outstanding visual effects (glitter effect). It can be applied to large surfaces to create original decorative finishes. Bolix Decomica provides a perfect alternative for multi-component, composite and multi-layered finishes. This easy-to-apply product will give a special finish to your building façade. Comes in 34 colours.



COMPONENTS	NAME OF PRODUCT	PAGE NO.	UNIT	COVERAGE [UoM/m ²]	RANGE [UoM/m ²]
KEY COAT	BOLIX OP	26	kg	0,33	0,25 ÷ 0,40
DECORATIVE RENDER	BOLIX TM DECO	38	kg	3,70	2,90 ÷ 4,50

The colours presented are printed, therefore take them as a reference guide only.
 The above calculation is for reference only. They are based on products available in the basic colour, without a surcharge.
 For the calculation average coverage of system components were taken. The calculation does not include insulation material, fixings, starter lists, corners, other accessories and labour costs.

DESIGN COLLECTION EFFECTS

BOLIX DECO_{BM}

Bolix DECO_{BM} is a range of colourful decorative exposed aggregate finishes, providing natural stone effect that will give a new look to your interior as well as exterior walls of new and existing buildings. It is easy to apply and comes in various colours so that you can quickly achieve the desired effect. Composed of carefully selected aggregate and premium acrylic binders, it gives a decorative touch to building surfaces. This ready-mixed render finish provides high resistance to mechanical damage and UV radiation as well as increased weather resistance and to fungal and algal growth, what make it perfect for cornices, plinths, pilasters, etc. The render comes in 34 colours.



Endless Summer / BM 2



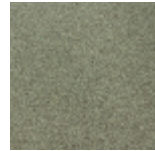
Foggy Coast / BM 3



Old beauty / BM 4



Silver Quenn / BM 7



Green Ghost / BM 8



Gold Spirit / BM 9



Milk Lake / BM 10



Stormy Sky / BM 11



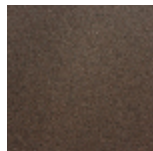
Dark Side / BM 12



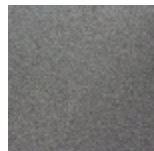
Electric Wine / BM 13



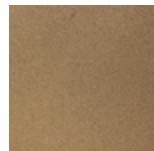
Warm Cream / BM 15



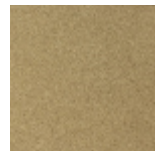
Deep Treasure / BM 16



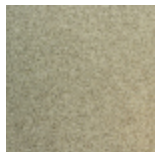
Silver Sand / BM 17



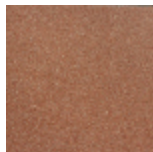
Perfect Harmony / BM 20



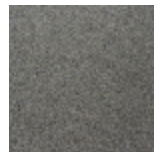
Natural Beauty / BM 21



Soft Grass / BM 22



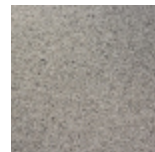
African Fruit / BM 23



Magic Night / BM 24



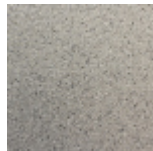
Green Vision / BM 25



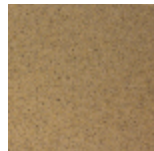
Cold Wind / BM 26



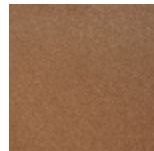
Exclusive Spice / BM 28



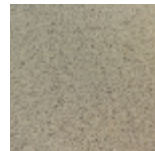
Grey Light / BM 29



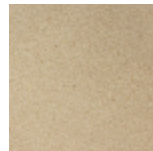
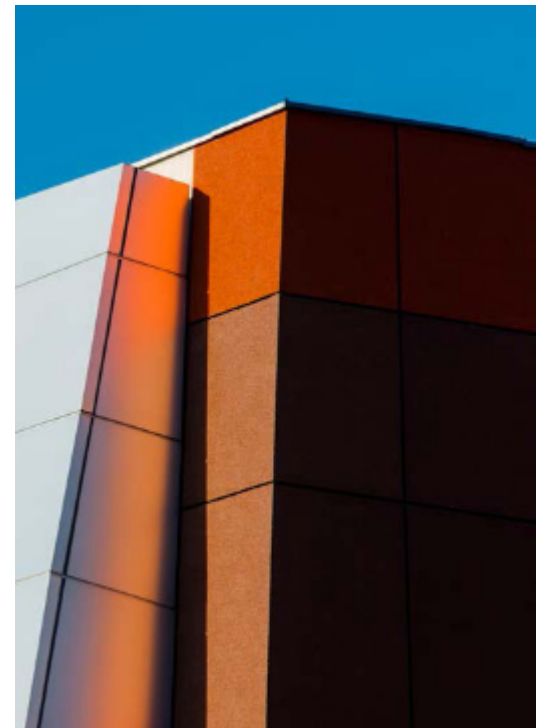
Golden Rain / BM 32



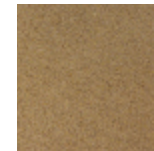
Silent Lady / BM 33



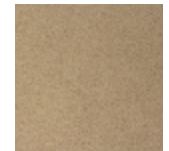
Mineral White / BM 37



Soft Pearl / BM 39



Tropical Wave / BM 41



Hypnotic Dance / BM 42



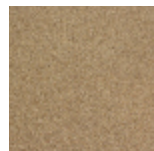
Sand Hill / BM 44



Spring Break / BM 45



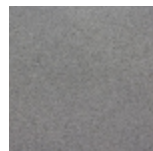
Exotic Vision / BM 46



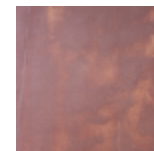
Cloud of Dust / BM 47



Bay Fog / BM 48



Elegant Grey / BM 49



Rust / BM 50

COMPONENTS	NAME OF PRODUCT	PAGE NO.	UNIT	COVERAGE [UoM/m ²]	RANGE [UoM/m ²]
KEY COAT	BOLIX OP	26	kg	0,33	0,25 ÷ 0,40
DECORATIVE RENDER	BOLIX DECO_{BM}	39	kg	3,00	2,50 ÷ 3,50

COMPONENTS	NAME OF PRODUCT	PAGE NO.	UNIT	COVERAGE [UoM/m ²]	RANGE [UoM/m ²]
KEY COAT	BOLIX OP	26	kg	0,33	0,25 ÷ 0,40
DECORATIVE RENDER	BOLIX DECO_{BM} RUST	39	kg	3,00	2,50 ÷ 3,50

The colours presented are printed, therefore take them as a reference guide only.
The above calculation is for reference only. They are based on products available in the basic colour, without a surcharge.
For the calculation average coverage of system components were taken. The calculation does not include insulation material, fixings, starter lists, corners, other accessories and labour costs.

BOLIX CONCRETE

This render producing a faux concrete effect makes an excellent example of a modern interpretation of timeless elegance. It brings raw, industrial-inspired effect to create an attractive and modern textural finish that will match even the most sophisticated decorative concepts. What is more, it blends in perfectly with metal, wood or glass, providing a unique textural look of concrete. Application of a special glaze will give a fantastic final touch to it as it offers unlimited possibilities to play with shades.



COMPONENTS	NAME OF PRODUCT	PAGE NO.	UNIT	COVERAGE [UoM/m ²]	RANGE [UoM/m ²]
PRIMER	BOLIX T	27	kg	0,09	0,08-0,10
RENDER	BOLIX TBR	38	kg	4,00	3,00-5,00
PRIMER	BOLIX T	27	kg	0,11	0,10-0,12
FINISH GLAZE	BOLIX DECO LAZUR	38	l	0,12	0,12

COMPONENTS	NAME OF PRODUCT	PAGE NO.	UNIT	COVERAGE [UoM/m ²]	RANGE [UoM/m ²]
PRIMER	BOLIX T	27	kg	0,09	0,08-0,10
RENDER	BOLIX WS	39	kg	4,50	3,00-5,00
PRIMER	BOLIX T	27	kg	0,11	0,10-0,12
FINISH GLAZE	BOLIX DECO LAZUR	38	l	0,12	0,12



The colours presented are printed, therefore take them as a reference guide only.
 The above calculation is for reference only. They are based on products available in the basic colour, without a surcharge.
 For the calculation average coverage of system components were taken. The calculation does not include insulation material, fixings, starter lists, corners, other accessories and labour costs.

DESIGN COLLECTION PRODUCTS

BOLIX TBR

BASE COAT FOR BRICK EFFECT AND CONCRETE EFFECT



- Water repellent.
- For interior and exterior use.
- Easy to work and trowel.
- Can be applied to MW and EPS insulation systems and to not insulated surfaces

Type	Colour	Average coverage per 1 m ² [kg/m ²]	Packaging unit [kg]
BOLIX TBR	Grey - in a colour simulating the appearance of traditional joints in brickwork and concrete masonry	8,0 - 14,0 (Brick effect: 6-8 mm coat) 4,0 - 5,0 (stamped concrete effect: 3-4 mm coat) 3,0 - 4,0 (textured concrete effect: 2-3 mm coat)	25

BOLIX DIAMENT

STONE FOR BOLIX DIAMENT EFFECT



- Gentle glitter
- Produce a shimmery glitter effect.

Type	Average coverage per 1 m ² [kg/m ²]	Packaging unit [kg]
BOLIX DIAMENT	0,1 - 0,2	2,5

BOLIX DECO LAZUR

FINISH GLAZE TO PROVIDE DECORATIVE PAINT COATINGS



- Solvent-free.
- Enhanced weather resistance.
- Provides high colour stability..

Type	Colour	Average coverage per 1 m ² [l/m ²]	Packaging unit [l]
BOLIX DECO LAZUR	Golden Oak/BWD 51; Natural Oak/BWD 52; White Oak/BWD 53; Dark Oak/BWD 54; Mahogany/BWD 55; Nut/BWD 56; Medium Brown/BWD 57; Cream/BWD 58		1 5
	beton 01, beton 02, Light Grey, Natural Cement	ca. 0,15	1 5
	010, 011, 012, 013, 014, 015		1 5
	Grey/ BWD 59; Ebony/ BWD 60		1 5

BOLIX BR

ACRYLIC VARNISH FINISH WITH GLITTER FLAKES



- Protects the sealed surface against adverse effect of moisture penetration.
- Solvent-free.
- Dries to a clear, washable finish with glitter flakes that shimmer with light.

Type	Colour	Average coverage per 1 m ² [l/m ²]	Packaging unit [l]
BOLIX BR	gold	0,06 - 0,10 (smooth surface)	1
	silver	0,10 - 0,15 (rough surface)	

BOLIX TM DECO

DECORATIVE FINISH WITH LARGE MICA FLAKES



- 36 attractive patterns.
- High resistance to mechanical damage and UV radiation.
- Increased resistance to algal and fungal growth.
- Component of the BOLIX EWI systems with EPS.

Type	Average coverage per 1 m ² [kg/m ²]	Packaging unit [kg]
BOLIX TM DECO**	2,90 - 4,50	25

BOLIX TR ACRYLIC ROLL-ON RENDER, TEXTURED



- Enables creation of endless textures and patterns.
- Offers increased resistance to algal and fungal growth as well as weather conditions.
- Flexible and low-porous.
- High colour stability.
- Very easy to work and trowel.
- For hand and machine application.

Type	Grain size [mm]	Texture	Average coverage per 1 m ² [kg/m ²]	Packaging unit [kg]
BOLIX TR	ca. 0,5	sand finish	ca. 1,75 (per 1 mm of coat thickness)	30

BOLIX DECO_{BM} THIN-COAT DECORATIVE NATURAL STONE FINISH



- 34 attractive patterns.
- High resistance to mechanical damage and UV radiation.
- Increased resistance to algal and fungal growth as well as weather conditions.
- Component of the BOLIX EWI systems with EPS.

Type	Grain size [mm]	Texture	Average coverage per 1 m ² [kg/m ²]	Packaging unit [kg]
BOLIX DECO_{BM} *	ca. 0,5	sandstone	2,5 - 3,5	25
	ca. 0,5	rust	2,5 - 3,5	15

* wyłącznie aplikacja ręczna

BOLIX METALLIC POINT METALLIC PAINT



- Provides a metallic gloss finish.
- Produces a robust and reliable weather resistant coating.
- Resistant to washing and wet scrubbing.
- Stable, lasting and attractive colours.

Type	Colour	Average coverage per 1 m ² [l/m ²]	Packaging unit [l]
BOLIX METALLIC POINT	gold, copper, silver	0,30 - 0,40	3

BOLIX WS FINISHING RENDER FOR BOLIX WOOD STAMP



- Frost and water resistant.
- Water vapour permeable.
- Easy to prepare, work and apply.
- Water repellent.
- Microfibre reinforced.
- Fine grain size.
- White cement based.

Type	Average coverage per 1 m ² [kg/m ²]	Packaging unit [kg]
BOLIX WS	ca. 1,50 (per 1 mm of coat thickness)	25

The silicone stamp for BOLIX WOOD EFFECT is also available for purchase. Available types: B1 / pattern without knots, B2 / pattern with knots, P1 / tree stump pattern. Contact the local BOLIX representative for more details.



DESIGN COLLECTION PRODUCTS

BOLIX WOOD EFFECT PANEL

FAUX WOOD PLANK

- decorative element attached to the wall surface to give a wood plank effect perfect imitation of wood grains
- 10 standard colour variants

- Easy to install and fit to each other.
- High resistance to impact and flexibility.
- Applied as an alternative to render finishes in etics systems and on not insulated substrates.

Type	Colour	Average coverage per 1 m ² [m ²]	Packaging unit [pcs.]
BOLIX WOOD EFFECT PANEL	white final color after applying BOLIX DECO Lazur (10 colours)	3 panels/ approx.1m ²	10 panels in package approx.3,34 m ²

BOLIX CONCRETE EFFECT PANEL

FAUX CONCRETE PANEL

- Decorative element attached to the wall surface to imitate the concrete formwork.
- 2 colour variants: Light grey [cp01] and Natural cement [cp02]
- Easy to install, attach and fit.

- High resistance to impact and flexibility.
- Can be applied in ETICS systems based on EPS and MW.
- Fire retardant system with mineral wool.
- Water vapour permeable..

Type	Colour	Average coverage per 1 m ² [m ²]	Packaging unit [pcs.]
BOLIX CONCRETE EFFECT PANEL	LIGHT GREY [CP01] NATURAL CEMENT [CP02]	1,4 panel/ 1m ²	3 panels in package approx.2,16 m ²

BOLIX 3D EFFECT PANEL

DECORATIVE 3D WALL PANELS

- Design wall panels - wide range of 3d decorative effects and colours, customised to suit customer needs.
- Easy to install and fit to each other - to each order an installation manual is issued with the design and layout of the decorative elements that are marked on the back.

- High resistance to impact and flexibility.
- Increased resistance.
- Low water absorption.
- High colour stability.

Type	Colour	Average coverage per 1 m ² [m ²]	Packaging unit [pcs.]
BOLIX 3D EFFECT PANEL	3 patterns PG01A i PG01B – Geometry panel pattern 1 (white/black) PG02 – Geometry panel pattern 2 (white/black) PF01 – Wave panel pattern 3 (black/white)	2 panels/ 1m ²	4 panels in package approx.2 m2

BOLIX RIBBED EFFECT PANEL

GROOVED/RIBBED WALL PANELS

- Decorative element attached to the wall surface to give a grooved/ribbed effect.
- Easy to install and fit to each other.

- High resistance to impact and flexibility.
- Applied as an alternative to render finishes in etics systems and on not insulated substrates.

Type	Colour	Average coverage per 1 m ² [l/m ²]	Packaging unit [l]
BOLIX RIBBED EFFECT PANEL	cream final color after applying silicone paint BOLIX SIL	2 panels/ approx. 1 m ²	6 panels in package approx. 3,12 m ²

BOLIX KD PANEL

READY MIXED DISPERSION ADHESIVE FOR BONDING THE PANELS



- Highly flexible.
- Ensures excellent adhesion of decorative panels to the substrate.

- Easy application.
- Ready to use.

Type	Colour	Average coverage per 1 m ² [kg/m ²]	Packaging unit [kg]
BOLIX KD PANEL	white	Average coverage when applied to even surface approx. 2,8 kg/m ²	30 15

BOLIX KD CLEAR PANEL

READY MIXED DISPERSION ADHESIVE FOR BONDING 3D PANELS.



- Highly flexible.
- Milky, clear after drying.
- Ensures excellent adhesion of decorative panels to the substrate.

- Easy application.
- Ready to use.

Type	Colour	Average coverage per 1 m ² [kg/m ²]	Packaging unit [kg]
BOLIX KD CLEAR PANEL	clear	Average coverage when applied to even surface approx. 0.6 – 0.8 kg/m ²	3

BOLIX BQS

PŁYTKA ELASTYCZNA O WYGLĄDZIE KLINKIERU

- High flexibility and resistance to thermal stress.
- High resistance to: precipitation, frost and hail, UV radiation - contains UV absorbers, algal and fungal growth, impact and scratch, dirt build-up.
- Water vapour permeable.

- Frost resistant.
- Easy and fast to install and work.
- After fixing the facing does not need to be treated with a sealer to reduce water penetration.

Type	Colour	Average coverage per 1 m ² [m ²]	Packaging unit [szt.]
BOLIX BQS	WARM COPPER/EQ10; DARK GRANITE/EQ110; BLACK BASALT/EQ130; GREY MARBLE/EQ150; WHITE ALABASTER/EQ170; NATURAL TRAVERTINE/EQ190*; ORANGE SAND/EQ30; GINGER ROCK/EQ50; BROWN RUBY/EQ91; RUBY STONE/EQ90	aproxx.. 50 pc./m ² – tile dimensions: 240 x 71 mm, grout width: 10 mm aproxx.. 48 pc./m ² – tile dimensions: 240 x 71 mm, grout width: 12 mm	144

BOLIX BQB

MASA KLEJĄCO-SPOINUJĄCA DO PŁYTEK ELASTYCZNYCH

- 2in1 - adhesive and grout in one product.
- High flexibility and resistance to thermal stress.
- High resistance to: weather, UV radiation - contains UV absorbers, algal and fungal growth.

- Provides high adhesion of elastic brick slips to the surface.
- Water vapour permeable.
- Frost resistant and hydrophobic when set.
- Easy and quick to work and apply.

Type	Colour	Average coverage per 1 m ² [m ²]	Packaging unit [kg]
BOLIX BQB	WHITE, DARK, NATURAL, GREY	Average coverage when applied to even surface approx. 2,4 kg / 1 m ²	15

BOLIX BQS MASS

MASA DO UZUPEŁNIANIA SZCZELIN MIĘDZY PŁYTKAMI ELASTYCZNYMI BOLIX BQS

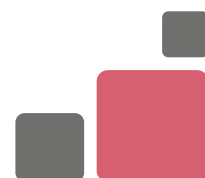
- High flexibility and resistance to thermal stress.
- High resistance to: weather, UV radiation - contains UV absorbers, algal and fungal growth.
- Water vapour permeable.

- Frost resistant and hydrophobic when set.
- Easy and quick to work and apply.
- After fixing the facing does not need to be treated with a sealer to reduce water penetration.

Type	Colour	Average coverage per 1 m ² [m ²]	Packaging unit [kg]
BOLIX BQS MASS	same as BOLIX BQS colours	Average coverage when applied to even surface approx. 15÷20 g/ 1 m ²	1

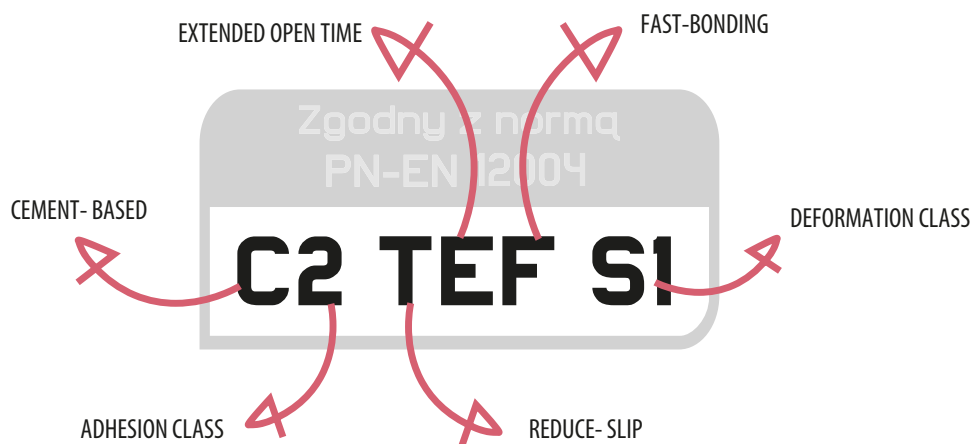


PRODUCTS FOR CERAMICS AND NATURAL STONE



COMPARISON OF CERAMIC TILE ADHESIVES

PRODUCTS FOR CERAMICS AND NATURAL STONE		BOLIX B	BOLIX P	BOLIX P BIAŁY	BOLIX PE	BOLIX E	BOLIX SE	BOLIX GE
PROPERTIES	SLIP RESISTANCE	✓	✓	✓	✓	✓	✓	✓
	IMPROVED SUBSTRATE ADHESION	✗	✓	✓	✓	✓	✓	✓
	EXTENDED WORKING TIME	✗	✗	✗	✗	✓	✓	✓
	QUICK HARDENING	✗	✗	✗	✗	✗	✗	✓
	HIGH FLEXIBILITY	✗	✗	✗	✗	✗	✓	✓
DESTINATION	TO INSTALL CERAMIC/STONE TILES AS PART OF EWI SYSTEMS WITH EPS AS INSULATION MATERIAL	✗	✗	✗	✗	✓	✓	✓
	FOR WET ROOMS	✓	✓	✓	✓	✓	✓	✓
	TILE ADHESIVE (2 ÷ 10 MM)	✓	✓	✓	✓	✓	✓	✗
	TILE ADHESIVE (2 ÷ 15 MM)	✗	✗	✗	✗	✗	✗	✓
	HEAVY LOAD SURFACES SUCH AS A GARAGES, WORKSHOPS, INDUSTRIAL FLOORS, HALLS, CORRIDORS, PASSAGEWAYS	✗	✓	✓	✗	✓	✓	✓
	FOR WALLS AND CEILINGS	✓	✓	✓	✓	✓	✓	✓
	FOR TERRACES, BALCONIES AND LOGGIAS	✗	✗	✗	✗	✓	✓	✓
	FOR INTERIOR AND EXTERIOR USE	✓	✓	✓	✓	✓	✓	✓
	LEVELLING COMPOUND	✓	✓	✓	✓	✓	✓	✓
	FOR BEDDING GLASS BLOCKS	✗	✗	✓	✗	✗	✗	✗



ADHESIVES, GROUTS AND OTHER PRODUCTS FOR CERAMICS AND NATURAL STONE

BOLIX B

BASE ADHESIVE FOR CERAMIC TILES



- Reduced slump (T) - enables tiling from up to down.
- Frost resistant.

- For firm, non-deformable substrates.
- Suitable for waterproof membranes (undertile waterproofing) in damp interiors.

Type	Average material consumption per 1 m ² [kg/m ²]	Packaging unit [kg]
BOLIX B	ca. 1,5 (per each 1 mm of thickness)	25

Zgodny z normą PN-EN 12004
C1T

BOLIX P

STONE AND CERAMIC TILE ADHESIVE



- Improved adhesion (C2) to the substrate.
- Reduced slump (T) - enables tiling from up to down.
- Frost resistant.

- Suitable over waterproof membranes (undertile waterproofing) in damp interiors.
- For installation of porcelain, quarry and stone tiles in heavy traffic areas.

Type	Average material consumption per 1 m ² [kg/m ²]	Packaging unit [kg]
BOLIX P	ca. 1,5 (per each 1 mm of thickness)	25

Zgodny z normą PN-EN 12004
C2T

BOLIX P WHITE

WHITE ADHESIVE FOR MARBLE, STONE CLADDING AND FOR BEDDING GLASS BLOCKS



- Improved adhesion (C2) to the substrate.
- Reduced slump (T) - enables tiling from up to down.
- Frost resistant.
- Dedicated for moisture sensitive natural stone.

- Suitable over waterproof membranes (undertile waterproofing) in damp interiors.
- For installation of porcelain, quarry and stone tiles in heavy traffic areas.
- Can be used for bedding glass blocks.

Type	Average material consumption per 1 m ² [kg/m ²]	Packaging unit [kg]
BOLIX P WHITE	ca. 1,5 (per each 1 mm of thickness)	25

Zgodny z normą PN-EN 12004
C2T

BOLIX PE

SEMI-FLEXIBLE ADHESIVE FOR PORCELAIN AND QUARRY TILES



- Improved adhesion (C2) to the substrate.
- Reduced slump (T) - enables tiling from up to down.

- Frost resistant.
- Suitable over waterproof membranes (undertile waterproofing) in damp interiors.

Type	Average material consumption per 1 m ² [kg/m ²]	Packaging unit [kg]
BOLIX PE	ca. 1,5 (per each 1 mm of thickness)	25

Zgodny z normą PN-EN 12004
C2T

BOLIX E

FLEXIBLE ADHESIVE FOR FIXING CERAMIC PORCELAIN AND QUARRY TILES.



- Improved adhesion (C2) to the substrate.
- Reduced slump (T) - enables tiling from up to down.
- Extended open time (E).

- Frost resistant.
- Can be applied over deformable substrates including underfloor heating and drywall.
- Component of the insulation system with EPS as insulating material, finished with ceramic/stone tiles.

Type	Average material consumption per 1 m ² [kg/m ²]	Packaging unit [kg]
BOLIX E	ca. 1,3 (per each 1 mm of thickness)	25

Zgodny z normą PN-EN 12004
C2TE

ADHESIVES, GROUTS AND OTHER PRODUCTS FOR CERAMICS AND NATURAL STONE

BOLIX SE

FLEXIBLE AND FAST-SETTING ADHESIVE FOR FIXING CERAMIC PORCELAIN AND QUARRY TILES.



- Improved adhesion (C2) to the substrate.
- Reduced slump (T) - enables tiling from up to down.
- Extended open time (E).
- Extreme flexibility (S1) - shrinkage compensating, accommodates and compensates for thermal and mechanical stress.

- Frost resistant.
- Suitable also for poor key quality surfaces including drywall, OSB, tile on tile installation.
- Component of the insulation system with EPS as insulating material, finished with ceramic/stone tiles.
- Formulated for large format tiles.

Type	Average material consumption per 1 m ² [kg/m ²]	Packaging unit [kg]
BOLIX SE	ca. 1,2 (per each 1 mm of thickness)	25

BOLIX SE WHITE

SUPER FLEXIBLE DEFORMABLE WHITE ADHESIVE FOR CERAMIC TILES AND MARBLE



- Dedicated for moisture sensitive natural stone, including marble.
- Improved adhesion (C2) to the substrate.
- Reduced slump (T) - enables tiling from up to down.
- Extreme flexibility (S1) - shrinkage compensating, accommodates and compensates for thermal and mechanical stress.

- Extended open time (E).
- Suitable also for poor key quality surfaces including drywall, OSB, tile on tile installation.
- Frost resistant.
- Dedicated for large format tiles.

Type	Average material consumption per 1 m ² [kg/m ²]	Packaging unit [kg]
BOLIX SE WHITE	ca. 1,2 (per each 1 mm of thickness)	25

BOLIX GE

FLEXIBLE GEL ADHESIVE



- Improved adhesion (C2) to the substrate.
- Reduced slump (T) - enables tiling from up to down.
- Extended open time (E).
- Frost resistant.

- Suitable also for poor key quality surfaces including drywall, OSB, tile on tile installation.
- Use time after mixing with water up to 4 hours
- Exterior and interior

Type	Colours	Average coverage per 1 m ² [kg/m ²]	Packaging unit [kg]
BOLIX GE**	grey sand white	Will vary with the joint width and the size of the grouted elements	25

BOLIX HYDRO

SINGLE PART WATERPROOFING MEMBRANE INTERIOR PAINTS



- Super flexible, jointless and seamless.
- Watertight.
- Does not contain solvents.

- Suitable for underfloor heating.
- Crack filling properties.

Type	Average material consumption per 1 m ² [kg/m ²]	Packaging unit [kg]
BOLIX HYDRO	1,3 - 2,0	14 7 4

ADHESIVES, GROUTS AND OTHER PRODUCTS FOR CERAMICS AND NATURAL STONE

BOLIX HYDRO-T SEALING TAPE



- Watertight.
- Flexible.
- High tensile strength.

- Resistant to aging.
- Easy to apply.
- Suitable for underfloor heating.

Type	Packaging unit [mb]
BOLIX HYDRO-T	10
	50
Type	Packaging unit [szt.]
BOLIX HYDRO-T 90Z BOLIX HYDRO-T 90W	25

BOLIX AQUASTOP FLEXIBLE GROUT WITH WATER BEADING EFFECT FOR CERAMIC AND STONE TILES

JOINT WIDTH 2- 6 mm



Zgodny z normą
PN-EN 13888
CG2WA

- High performance cementitious mortar (CG2).
- Low water absorption (W).
- High scrub resistance (A).

- Frost-resistant, flexible and low absorbent (water beading effect).
- Increased resistance to cracking, algal and fungal growth.

Type	Colours	Average material consumption per 1 m ² [kg/m ²]	Packaging unit [kg]
BOLIX AQUASTOP	white, light grey		2
	brown, dark brown		2
	beige, grey, dark grey, light brown	0,3 - 1,2 (depending on joint width and depth and tile size)	2
	pewter		2 20



BOLIX®

PRODUCTS FOR CERAMICS AND STONE



INTERIOR **PAINTS**



COMPARISON OF THE INTERIOR PAINTS (INSIDE)



INTERIOR PAINTS (INSIDE)		BOLIX SONATA ACRYL WHITE	BOLIX ACORD ACRYL PERFECT	BOLIX POLITONE PLUS	BOLIX CAMERTONE LATEX MATT	BOLIX CAMERTONE LATEX SATIN	BOLIX HARMONIC SILICATE	BOLIX PROCARE AG+
PROPERTIES	COLOURS	SUPER WHITE	918 COLOURS	WHITE AND 876 COLOURS	WHITE AND 876 COLOURS	1043 COLOURS	70 COLOURS	180 COLOURS
	GLOSS LEVEL	MATT	DEEP MATT	DEEP MATT	DEEP MATT	SATIN / SILK SHEEN	DEEP MATT	MATT / SATIN
	RESISTANCE TO WET SCRUBBING (ACC. TO PN-EN 13300)	CLASS 4	CLASS 2	CLASS 2	CLASS 1	CLASS 1	CLASS 2	CLASS 1
	OPACITY (ACC. TO PN-EN 13300)	CLASS 1	CLASS 1	CLASS 1	CLASS 1	CLASS 1	CLASS 1	CLASS 1
	COVERAGE	UP TO 12 m ² /l	UP TO 12 m ² /l	UP TO 13 m ² /l	UP TO 14 m ² /l	UP TO 14 m ² /l	UP TO 12 m ² /l	UP TO 14 m ² /l
AREA OF APPLICATION	CEILINGS	●●●	●●	●●	●●	●●	●●	●●
	BEDROOMS	●●	●●●	●●	●●●	●●	●●	●●●
	LIVING ROOMS / SITTING ROOMS	●●	●●●	●●	●●●	●●●	●●●	●●●
	HALLS	●●	●●	●●	●●●	●●●	●●	●●●
	OFFICE ROOMS	●●	●●	●●●	●●●	●●●	●●	●●●
	SCHOOLS AND PUBLIC BUILDINGS	●●	●●	●●	●●●	●●●	●●	●●●
	KITCHENS	●●	●●	●●●	●●	●●●	●●	●●●
	BATHROOMS	●●	●●	●●●	●●	●●●	●●	●●●
	DEVELOPER'S STANDARD PAINT COATING	●●	●●	●●	●●	●●	●●	●●
	REPAINTING	●●	●●●	●●	●●●	●●●	●●	●●●
OPERATING THEATRES, LABORATORIES	—	—	—	—	—	—	●●●	
SURFACE	CEMENT PLASTERS	✓	✓	✓	✓	✓	✓	✓
	GYPSUM PLASTERS	✓	✓	✓	✓	✓	✓	✓
	PLASTERBOARDS	✓	✓	✓	✓	✓	✓	✓
	CONCRETE SUBSTRATES	✓	✓	✓	✓	✓	✓	✓
	STONE	✓	✓	✓	✓	✓	✓	✓
	BRICK	✓	✓	✓	✓	✓	✓	✓
	TIMBER	✓	✓	✓	✓	✓	✗	✓
	WALLPAPER	✗	✗	✓	✓	✓	✓	✓
	FIBREGLASS WALLPAPER	✗	✗	✓	✓	✓	✓	✓

BOLIX SONATA ACRYL WHITE

SUPER WHITE ACRYLIC PAINT FOR CEILINGS

RECOMMENDED PRIMER: BOLIX ACTIVE GRUNT LATEX



- Hiding power - CLASS 1.
- Resistance to wet scrubbing - CLASS 4.

- Super white.
- Meets the requirements for the permissible VOC content.

Type	Coverage for one coat application [m ² /l]	Packaging unit [l]
BOLIX SONATA ACRYL WHITE	up to 12	10
		5

BOLIX ACORD ACRYL PERFECT

ACRYLIC INTERIOR PAINT

RECOMMENDED PRIMER: BOLIX ACTIVE GRUNT LATEX



- Hiding power - CLASS 1.
- Resistance to wet scrubbing - CLASS 2.

- Stable and attractive colours.
- Meets the requirements for the permissible VOC content.

Type	Coverage for one coat application [m ² /l]	Packaging unit [l]
BOLIX ACORD ACRYL PERFECT	up to 12	18
		10
		5
		2,5

BOLIX POLITONE PLUS

LATEX PAINT FOR WALLS AND CEILINGS

RECOMMENDED PRIMER: BOLIX ACTIVE GRUNT LATEX



- Hiding power - CLASS 1.
- Resistance to wet scrubbing - CLASS 2.
- Deep matt finish without reflections.

- Thixotropic - non-drip paint, easy to apply.
- Stable and attractive colours.
- Meets the requirements for the permissible VOC content.

Type	Colour	Coverage for one coat application [m ² /l]	Packaging unit [l]
BOLIX POLITONE PLUS **	white	up to 13	18
			10
			5

BOLIX CAMERTONE LATEX SATIN

HIGH PERFORMANCE SATIN LATEX PAINT FOR WALLS AND CEILINGS

RECOMMENDED PRIMER: BOLIX ACTIVE GRUNT LATEX



- Hiding power - CLASS 1.
- Resistance to wet scrubbing - CLASS 1.
- Hypo-allergenic.

- Stable and attractive colours.
- Meets the requirements for the permissible VOC content.

Type	Coverage for one coat application [m ² /l]	Packaging unit [l]
BOLIX CamertOne LATEX SATIN	up to 14	10
		2,5

BOLIX CAMERTONE LATEX MATT

HIGH PERFORMANCE MATT LATEX PAINT FOR WALLS AND CEILINGS

RECOMMENDED PRIMER: BOLIX ACTIVE GRUNT LATEX



- Hiding power - CLASS 1.
- Resistance to wet scrubbing - CLASS 1.
- Deep matt finish without reflections.

- Hypo-allergenic.
- Stable and attractive colours.
- Meets the requirements for the permissible VOC content.

Type	Coverage for one coat application [m ² /l]	Packaging unit [l]
BOLIX CamertOne LATEX MATT	up to 14	18
		10
		5
		2,5

** Ask if available. Made on special order and not available in the service Bolix Express.

INTERIOR PAINTS

BOLIX HARMONIC SILICATE

POLY-SILICATE INTERIOR PAINT

RECOMMENDED PRIMER: BOLIX SG-W



- Hiding power - CLASS 1.
- Resistance to wet scrubbing – CLASS 2.
- Low alkaline.
- Deep matt finish without reflections.

- Thixotropic - non-drip paint, easy to apply.
- Meets the requirements for the permissible VOC content.
- Hypo-allergenic.

Type	Coverage for one coat application [m ² /l]	Packaging unit [l]
BOLIX HARMONIC SILICATE	up to 12	10 5**

BOLIX PROCARE Ag+

LATEX PAINT WITH SILVER IONS (MATT AND SATINE)

RECOMMENDED PRIMER: BOLIX ACTIVE GRUNT LATEX



- High resistance to bacteria growth.
- Self-sterilising.
- Hiding power - CLASS 1.
- Resistance to wet scrubbing – CLASS 1.

- Thixotropic - non-drip paint, easy to apply.
- High coverage - up to 14 m² per 1 litre of paint for a single application.
- Meets the requirements for the permissible VOC content.
- Resistant to washing with popular disinfectants used in hospitals.

Type	Coverage for one coat application [m ² /l]	Packaging unit [l]
BOLIX PROCARE Ag+	up to 14	10

BOLIX PRESTO ACRYL

PRE-MIX ACRYLIC SKIM COAT



- Easy and quick to apply and sand.
- For hand and machine application.

Type	Average coverage per 1 m ² [kg/m ²]	Packaging unit [kg]
BOLIX PRESTO ACRYL	ca. 1,5 (per each 1 mm of thickness)	19

BOLIX ACTIVE LATEX PRIMER

OPAQUE LATEX PRIMER



- Reduces and equalizes surface porosity.
- Seals off and strengthens the substrate.

- Increases the coverage of BOLIX interior paints.
- Facilitates paint application

Type	Coverage for one coat application [m ² /l]	Packaging unit [l]
BOLIX ACTIVE GRUNT LATEX	up to 10	10 5

BOLIX SG-W

SILICATE PRIMER AND SANITIZER FOR THE SILICONE PAINT BOLIX HARMONIC SILICATE



- Reduces and equalizes surface porosity.
- Seals off and strengthens the substrate.
- Strong alkyl reaction of the paint inhibits and prevents the microbial growth on the treated surface.

Type	Average coverage [m ² /kg]	Packaging unit [kg]
BOLIX SG-W	up to 4,00	10

** Ask if available. Made on special order and not available in the service Bolix Express.

BOLIX®



BOLIX Professional

Paints
for demanding
painters



BOLIX HB SUPER WHITE

ANTI-REFLECTIVE ECO-FRIENDLY HYBRID LATEX WHITE PAINT



- Hybrid paint with special binder composition that ensure easy paint application that is non-drip and provide superior performance to the paint coat
- Super opacity (hiding power – CLASS 1).
- Water borne, odourless - negligible volatile organic compound content (VOC<1.2 g/l)

- Deep matt, anti-reflective coating provided by carefully selected fillers and additives, masks minor imperfections of the surface.
- Water vapour permeable.
- Beautiful, trendy white.

Type	Coverage for one coat application [m ² /l]	Packaging unit [l]
BOLIX HB SUPER WHITE	up to 13	10

BOLIX AC 3

ANTI-REFLECTIVE ECO-FRIENDLY HYBRID LATEX PAINT COATING

REKOMENDOWANY PREPARAT GRUNTUJĄCY: BOLIX GC30



- Hybrid paint with special binder composition that ensure easy paint coating without splattering and provide superior technical performance to the paint coat
- Excellent hiding power - CLASS 1.
- Water borne, odourless - negligible volatile organic compound content (VOC<1.2 g/l)

- Deep matt, anti-reflective coating provided by carefully selected fillers and additives, masks minor imperfections of the surface.
- Water vapour permeable.

Type	Coverage for one coat application [m ² /l]	Packaging unit [l]
BOLIX AC 3	up to 13	4,75 9,50

BOLIX AC 5

CERAMIC ECO-FRIENDLY STAIN-RESISTANT HYBRID LATEX PAINT COATING

REKOMENDOWANY PREPARAT GRUNTUJĄCY: BOLIX GC30



- Hybrid paint with special binder composition that ensure easy paint coating without splattering and provide superior technical performance to the paint coat
- highest resistance to wet scrubbing – CLASS 1, for spaces that must be cleaned recurrently
- Excellent hiding power - CLASS 1.

- Water borne, odourless - negligible volatile organic compound content (VOC<1.7 g/l)
- Very strong matt paint coat, no reflections.
- No shiny wipe marks after washing the surface.
- Contains ceramic filler that gives high mechanical resistance to the coating.

Type	Coverage for one coat application [m ² /l]	Packaging unit [l]
BOLIX AC 3	up to 13	4,75 9,50

BOLIX GC15

UNIVERSAL HYBRID PRIMER



- Gives the key for the paint.
- Seals off the surface, suppresses dust formation and evens out surface porosity.
- Fast-drying.

- Water borne, odourless - negligible volatile organic compound content (VOC<0.6 g/l).
- Seals and blocks out stains in base coats to prevent bleeding through to the top coats.

Type	Coverage for one coat application [m ² /l]	Packaging unit [l]
BOLIX GC15	ca. 0,10 ÷ 0,50	5

BOLIX GC30

OPAQUE HYBRID PRIMER



- Seals off the substrate and provides a uniform colour across entire surface.
- Increases the coverage of BOLIX interior paints.
- Seals off the substrate and provides a uniform colour across entire surface.

- Water borne, odourless - negligible volatile organic compound content (VOC<1.2 g/l)
- Fast-drying.

Type	Coverage for one coat application [m ² /l]	Packaging unit [l]
BOLIX GC30	up to 10	5 10



PRODUCTS FOR TERRACES, LOGGIAS AND BALCONIES



PRODUCTS FOR TERRACES, LOGGIAS AND BALCONIES

BOLIX AKO ANTI-CORROSION MORTAR FOR THE PROTECTION OF STEEL REINFORCEMENT RODS

- Excellent adhesion to steel.
- Contains corrosion inhibitors - inhibits the corrosion of reinforcement bars.
- Easy to apply.



Type	Average coverage 1m preta ø 14 [g/m]	Packaging unit [kg]
BOLIX AKO	Material consumption for two coat application is ca. 150	5

BOLIX SCS BOND COAT

- Excellent adhesion to concrete.
- Easy to apply.
- Low linear shrinkage.



Type	Average material consumption per 1m ² [kg/m ²]	Packaging unit [kg]
BOLIX SCS	ca. 1,5 - 2,5	25

BOLIX WB REPAIR MORTAR AND FILLER FOR GAPS (REPROFILING)

- Compressive strength ≥ 40 MPa.
- Excellent adhesion to concrete.
- Fast-drying.
- Frost resistant.
- Fibre reinforced.
- Low linear shrinkage.



Type	Average material consumption per 1m ² [kg/m ²]	Packaging unit [kg]
BOLIX WB	ca. 1,9 (per 1 mm of coat thickness)	25

BOLIX SPN CEMENT REPAIR COMPOUND

- Excellent adhesion to concrete.
- High compressive strength ≥ 25 MPa.
- Frost resistant.
- Frost resistant.
- Low linear shrinkage.



Type	Average material consumption per 1m ² [kg/m ²]	Packaging unit [kg]
BOLIX SPN	ca. 1,6 (per 1 mm of coat thickness)	25

BOLIX HYDRO DUO FLEXIBLE TWO COMPONENT WATERPROOFING COMPOUND

- Fibre reinforced.
- Highly flexible.
- Crack filling properties.
- Watertight.
- Water vapour permeable.
- Frost resistant when set.
- No priming necessary.
- Does not contain solvents.
- For interior and exterior use.
- Formulated for walls and floors, including over underfloor heating, on balconies, loggias and terraces.



Type	Average material consumption per 1 m ² [kg/m ²]	Packaging unit [kg]
BOLIX HYDRO DUO	3,4 - 5,1 (for two coat application over properly prepared surface)	25 + 8,3

PRODUCTS FOR TERRACES, LOGGIAS AND BALCONIES

BOLIX PC-B FAST-SETTING CEMENT SCREED (20 ÷ 70 MM)



- Fast-hardening.
- High compressive strength ≥ 40 MPa.
- Frost resistant when set.
- Foot traffic after min. 3h.

- For hand application or with a screed pump.
- Low linear shrinkage.
- Suitable for underfloor heating.

Type	Average material consumption per 1m ² [kg/m ²]	Packaging unit [kg]
BOLIX PC-B	ca. 2,0 (per 1 mm of coat thickness)	25

BOLIX PC-S THIN-LAYER FAST-SETTING CEMENT SCREED (5 ÷ 30 MM)



- High compressive strength ≥ 30 MPa.
- Frost resistant when set.
- Foot traffic after min. 5h.

- Low linear shrinkage.
- Fibre reinforced.

Type	Average material consumption per 1m ² [kg/m ²]	Packaging unit [kg]
BOLIX PC-S	ca. 2,0 (per 1 mm of coat thickness)	25

BOLIX PC CEMENT SCREED (25 ÷ 50 mm)



- Frost resistant when set.
- For hand and machine application.

- Low linear shrinkage.
- Suitable for underfloor heating.

Type	Average material consumption per 1m ² [kg/m ²]	Packaging unit [kg]
BOLIX PC	ca. 2,2 (per 1 mm of coat thickness)	25

BOLIX EK BONDING COMPOUND FOR THE CEMENT SCREEDS BOLIX PC, BOLIX PC-B AND BOLIX PC-S



- Provides a key and promotes adhesion of selected BOLIX cement screeds to the substrate.
- Resistant to high pH.

- Easy to work and apply.
- Concentrated.

Type	Average material consumption per 1m ² [kg/m ²]	Packaging unit [kg]
BOLIX EK	ca. 0,12 BOLIXEK/water 1:2 dla BOLIX PC-B	5**
	ca. 0,18 BOLIX EK/water 1:1 dla BOLIX PC-S, PC	10

BOLIX HYDRO-TW SEALING TAPE



- Watertight.
- Flexible.
- High tensile strength.
- Resistant to aging.

- Alkali-resistant.
- Easy to apply.
- Suitable for underfloor heating.

Type	Packaging unit [mb]
BOLIX HYDRO-TW	10
	50
Type	Packaging unit [pcs.]
BOLIX HYDRO-TW 90Z BOLIX HYDRO-TW 90W	25

PRODUCTS FOR TERRACES, LOGGIAS AND BALCONIES

BOLIX HYDRO-TBS SELF-ADHESIVE BUTYL TAPE



- Self-adhesive.
- Watertight.
- Flexible and deformable.
- Alkali-resistant.

- Fleece backed.
- Excellent adhesion to most of building materials including PVC, stainless steel and aluminium.

Type	Packaging unit [mb]
BOLIX HYDRO-TBS	10

BOLIX HYDRO-MB SEALING TAPE FOR WINDOW AND DOOR SILLS PERFORATED ON ONE SIDE AND WITH BUTYL STRIP



- For sealing around windows and doors.
- Self-adhesive.
- Watertight.
- Flexible and deformable.
- Alkali-resistant.

- Easy to apply.
- Fleece backed to enhance adhesion.
- Perforated on one side to increase adhesion and speed up drying of waterproofing compounds.
- Butyl strip that provide high adhesion to most of building materials, including PVC, stainless steel, aluminium.

Type	Packaging unit [mb]
BOLIX HYDRO-MB	10

BOLIX SD BACKER ROD



- Backing for sealants to reduce their consumption.
- Easy to install.

- Elastic.
- Waterproof.

Type	Thickness [mm]	Packaging unit [mb]
BOLIX SD	6	10
	6	50
	8	10
	8	50

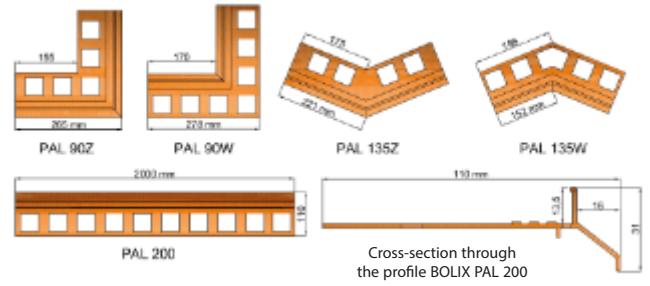
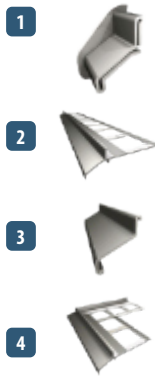
BOLIX[®]

Balcony

Solutions for repairing old and finishing new balconies, loggias and terraces. modern solutions and traditionally effective methods.

BALCONY PROFILES

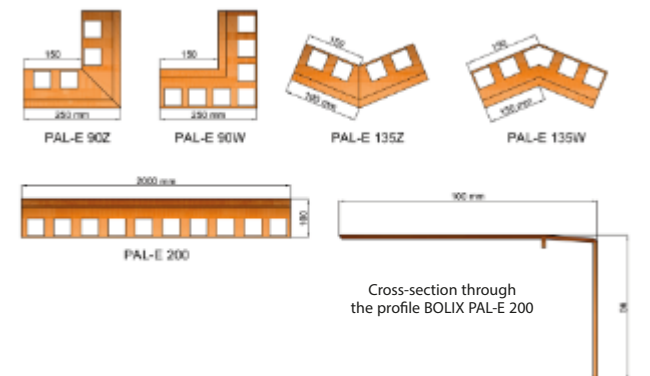
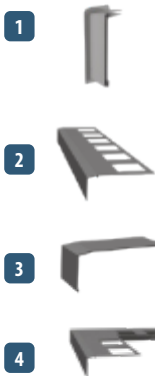
BOLIX PAL PROFILES



Product	Type	Unit
1. END STOP	BOLIX PAL-F complete (right, left)	set
2. STRAIGHT PROFILE	BOLIX PAL 200 (length 2,0 m)	pcs.
3. SPLICE	BOLIX PAL-C	pcs.
4. OUTSIDE CORNER	BOLIX PAL 90Z / 135Z	pcs.
4. INSIDE CORNER	BOLIX PAL 90W / 135W	pcs.

CURVED PROFILES ARE AVAILABLE ON DEMAND AND ARE INDIVIDUALLY PRICED

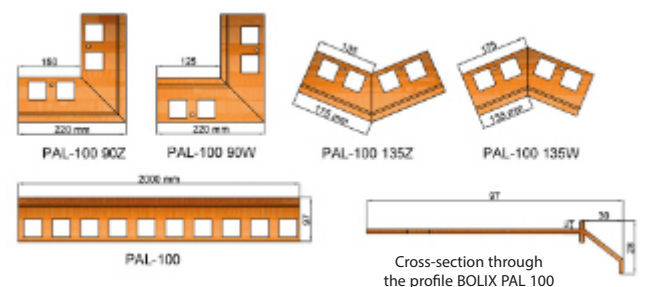
BOLIX PAL-E PROFILES



Product	Type	Unit
1. END STOP	BOLIX PAL-EF complete (right, left)	set
2. STRAIGHT PROFILE	BOLIX PAL-E 200 (length 2,0 m)	pcs.
3. SPLICE	BOLIX PAL-EC	pcs.
4. OUTSIDE CORNER	BOLIX PAL-E 90Z / 135Z	pcs.
4. INSIDE CORNER	BOLIX PAL-E 90W / 135W	pcs.

CURVED PROFILES ARE AVAILABLE ON DEMAND AND ARE INDIVIDUALLY PRICED

BOLIX PAL-100 PROFILES

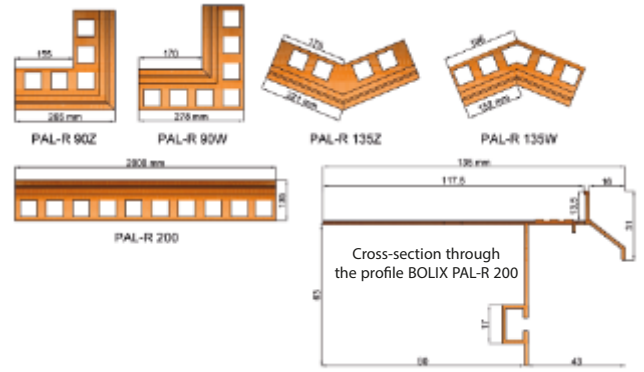
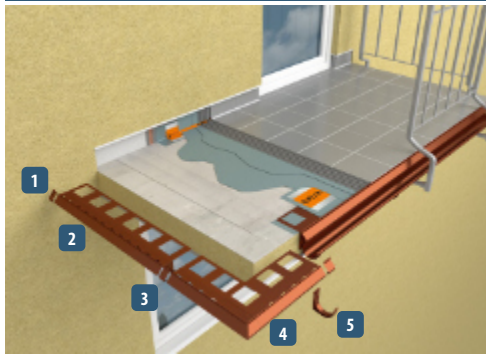


Product	Type	Unit
1. END STOP	BOLIX PAL-F complete (right, left)	set
2. STRAIGHT PROFILE	BOLIX PAL-100 (length 2,0 m)	pcs.
3. SPLICE	BOLIX PAL-100C	pcs.
4. OUTSIDE CORNER	BOLIX PAL-100 90Z / 135Z	pcs.
4. INSIDE CORNER	BOLIX PAL-100 90W / 135W	pcs.

CURVED PROFILES ARE AVAILABLE ON DEMAND AND ARE INDIVIDUALLY PRICED

BALCONY PROFILES

BOLIX PAL-R PROFILES



Product	Type	Unit
1. END STOP	BOLIX PAL-RF complete (right, left)	set
2. STRAIGHT PROFILE	BOLIX PAL-R 200 (length 2,0 m)	pcs.
3. SPLICE	BOLIX PAL-RC	pcs.
4. OUTSIDE CORNER	BOLIX PAL-R 90Z / 135Z	pcs.
4. INSIDE CORNER	BOLIX PAL-R 90W / 135W	pcs.
5. GUTTER HOOK+SCREWS (4 units + 8 units)	BOLIX PAL-RH	set

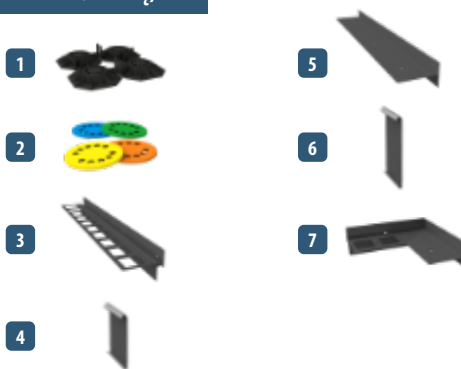
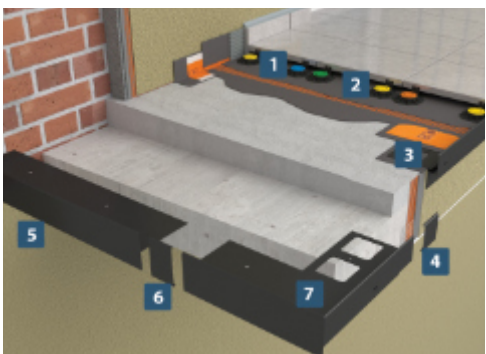
CURVED PROFILES ARE AVAILABLE ON DEMAND AND ARE INDIVIDUALLY PRICED

BASIC COLOURS

	RAL 7037
	RAL 7024
	RAL 8019

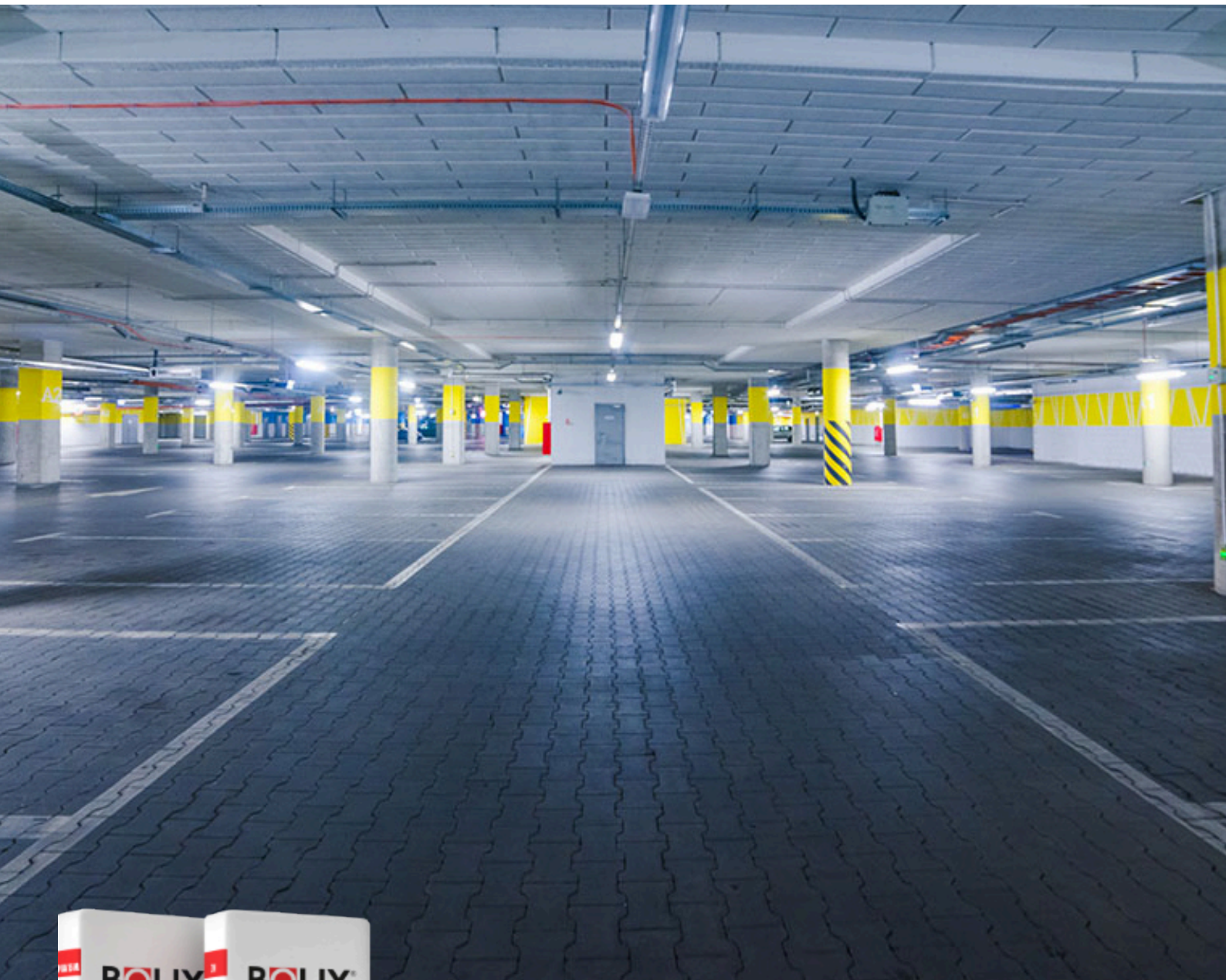
OTHER COLOURS INDIVIDUALLY PRICED

BOLIX W35 PROFILES (DO BALKONU Z POSADZKĄ WENTYLOWANĄ)



Product	Type	Unit
1. TERRACE BRACKETS	TERRACE BRACKETS PAL-W PT [35]	set
2. SMART PADS	SMART PADS PAL-W [35] (KD05, KD1, KD2, KD3)	set
3. STRAIGHT PROFILE	STRAIGHT PROFILE PAL-W [35]	pcs.
4. STRIGHT PROFILE CONNECTOR	STRIGHT PROFILE CONNECTOR PAL-W L [35]	pcs.
5. SIDE PROFILE	SIDE PROFILE PAL-W B [35]	pcs.
6. SIDE PROFILE CONNECTOR	SIDE PROFILE CONNECTOR PAL-W LB [35]	pcs.
7. OUTSIDE CORNER	OUTSIDE CORNER 90 PAL-W 90Z [35]	pcs.
7. INSIDE CORNER	INSIDE CORNER 90 PAL-W 90W [35]	pcs.

CURVED PROFILES ARE AVAILABLE ON DEMAND AND ARE INDIVIDUALLY PRICED



DOCIEPLENIE I IZOLACJA STROPÓW IZO-STROP



PRODUKTY IZO-STROP

BOLIX STG

PRIMER PAINT



- Improves adhesion and facilitates application of the paints BOLIX STS 10 and BOLIX STS 15.
- Suppresses dust formation and evens out surface porosity.
- Protects the primed surface against adverse effect of moisture.
- Blocks out stains in base coats and prevents from bleeding through to the top coats.

- Reduces bleeding of the substrate colour through the render finish.
- Component of the thermal insulation system for ceilings BOLIX IZO-STROP based on MW lamella slabs chamfered on the top.

Type	Average coverage per 1 m ² [kg/m ²]	Packaging unit [kg]
BOLIX STG	ca. 0,4 ÷ 0,7	25

BOLIX STS 10

STRUCTURAL PAINT WITH GRANULATION OF 1 MM



- Can be applied on walls and ceilings in the interiors, in garages, industrial halls, commercial halls, basement rooms.
- White with a speckled structure, also comes in color.

- Can be applied over properly prepared mineral substrates such as concrete, cement and lime-cement plasters, drywall, wallpaper and glass fibre wallpaper, even without using primer.

Type	Average coverage per 1 m ² [kg/m ²]	Packaging unit [kg]
BOLIX STS 10	ca. 1,0 ÷ 1,7	30

BOLIX STS 15

STRUCTURAL PAINT WITH GRANULATION OF 1,5 MM



- White – possibility of coloring on special request.

- Component of the thermal insulation system for ceilings BOLIX IZO-STROP based on MW lamella slabs chamfered on the top.

Type	Average coverage per 1 m ² [kg/m ²]	Packaging unit [kg]
BOLIX STS 15	ca. 1,3 ÷ 1,7	30

BOLIX ZW IZO-STROP

ADHESIVE FOR MW LAMELLA SLABS CHAMFERED ON THE TOP IN BOLIX IZO-STROP SYSTEM.



- Good adhesion to mineral surfaces and MW lamella.

- Easy to work and trowel.

Type	Average coverage per 1 m ² [kg/m ²]	Packaging unit [kg]
BOLIX ZW IZO-STROP	≥ 5,0 kg/m ²	25

BOLIX MP KA 15M

THIN-COAT MINERAL RENDER, SPECKLED TEXTURE, GRANULATION APPROX. 1.5 MM



- White – possibility of coloring on special request.
- High vapour permeability.

- component of the thermal insulation system for ceilings BOLIX IZO-STROP based on MW lamella slabs chamfered on the top.

Type	Average coverage per 1 m ² [kg/m ²]	Packaging unit [kg]
BOLIX MP KA 15M	ca. 2,2 ÷ 3,0	25



BITUMEN WATERPROOFING



BITUMEN WATERPROOFING

BOLIX B-MB EMULSION ONE-PART BITUMEN-LATEX PRIMER AND SEALANT



- Hand and spray applied.
- Can be applied as a primer when thinned with water.
- UV resistant.

- Solvent-free.
- Ready to use.
- Suitable for roofing repair and maintenance.

Type	Average coverage per 1 m ² [l/m ²]	Packaging unit [l]
BOLIX B-MB Emulsion	0,6 (for damp proofing)	25

BOLIX B-1SM EXPRESS SINGLE PART, THICK-COAT POLYSTYRENE MODIFIED RUBBERIZED BITUMEN COATING



- Quickly develops weather resistance after application.
- Fast-drying.
- Hand and spray applied.
- Provides highly flexible coating.
- Crack bridging capabilities.

- Resistant to aggressive substances present in soil.
- Solvent-free.
- Ready to use.
- For interior and exterior application.
- For installation of XPS boards.

Type	Average coverage per 1 m ² [l/m ²]	Packaging unit [l]
BOLIX B-1SM Express	ca. 3,5 (for damp proofing) ca. 3,5 (for waterproofing) ca. 4,5 (for heavy-duty waterproofing)	32

BOLIX B-2SM PROFI TWO PART, THICK-COAT POLYSTYRENE MODIFIED RUBBERIZED BITUMEN COATING



- Quickly develops weather resistance after application.
- Fast-drying.
- Hand and spray applied.
- Enhanced flexibility.
- Crack bridging capabilities.

- Resistant to aggressive substances present in soil.
- Solvent-free.
- For interior and exterior application.
- For installation of XPS boards.

Type	Average coverage per 1 m ² [l/m ²]	Packaging unit [l]
BOLIX B-2SM Profi	ca. 4,5 (for damp proofing) ca. 4,5 (for waterproofing) ca. 6,0 (for heavy-duty waterproofing)	30

BOLIX B-2SM UNI TWO-PART, THICK-COAT BITUMEN-LATEX COATING FIBRE REINFORCED



- Quickly develops weather resistance after application.
- Fast-drying.
- Flexible.
- Crack bridging capabilities.

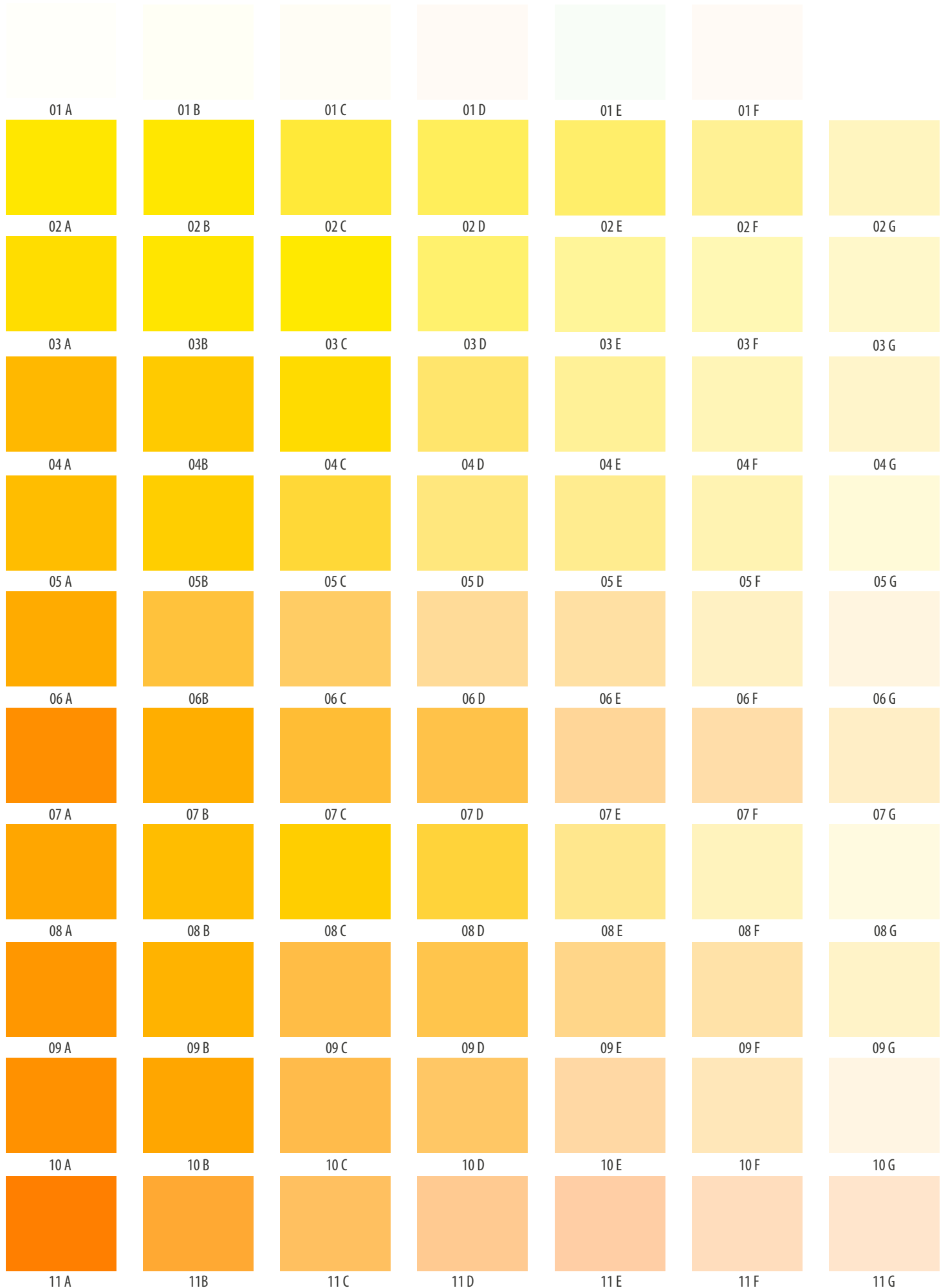
- Resistant to aggressive substances present in soil.
- Solvent-free.
- For interior and exterior application.
- For installation of XPS boards.

Type	Average coverage per 1 m ² [kg/m ²]	Packaging unit [kg]
BOLIX B-2SM Uni	ca. 4,4 (for damp proofing) ca. 4,4 (for waterproofing) ca.5,7 (for heavy-duty waterproofing)	32

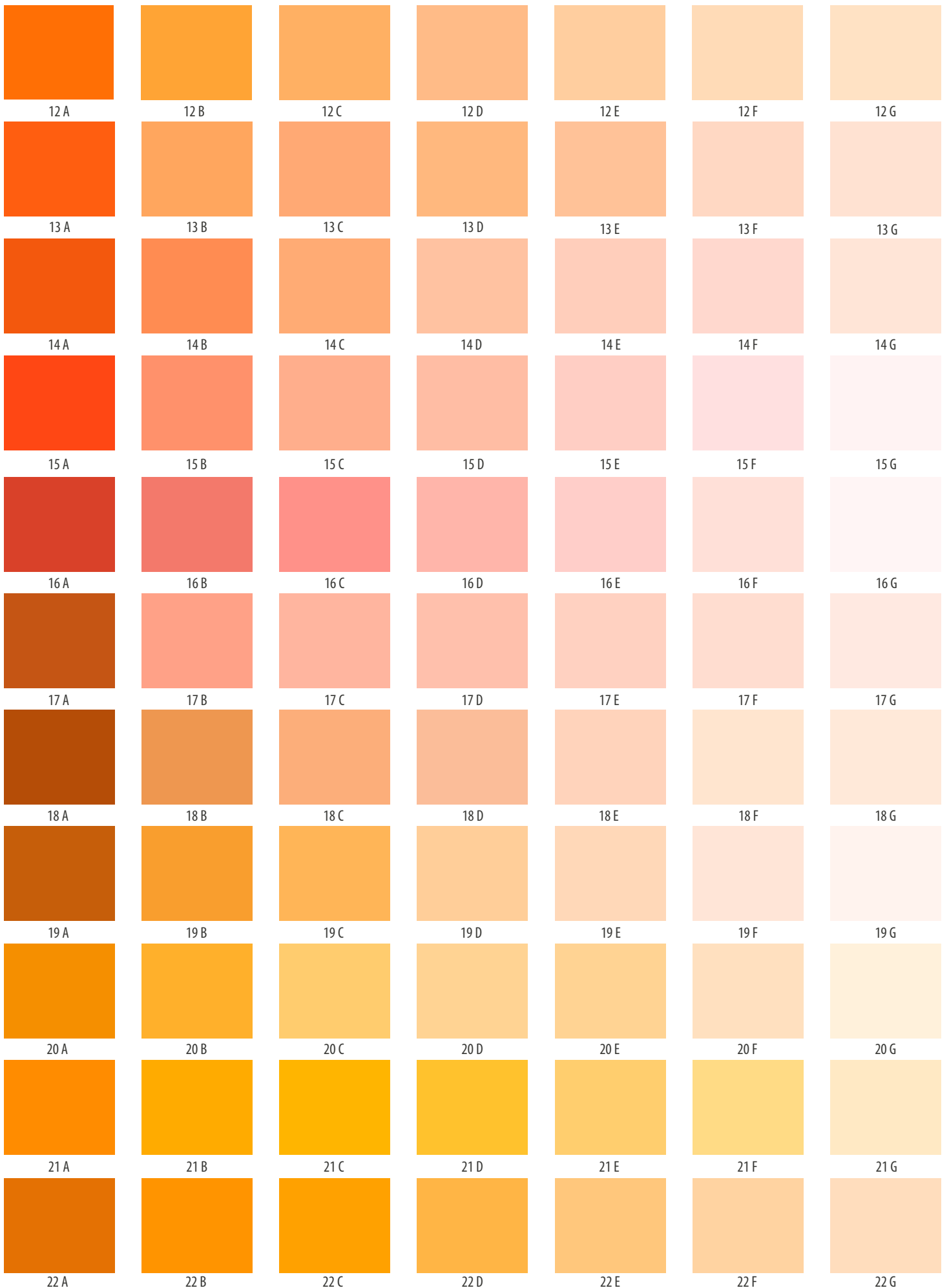
LIST OF PRODUCTS

PRODUCT	PAGE NO.				
ADHESIVES AND BASE COATS		PRIMERS AND SEALERS			
BOLIX Z	17	BOLIX SG	27	SKIM COATS/ JOINT COMPOUNDS AND INTERIOR PRODUCTS	
BOLIX U	17	BOLIX SIG	27	BOLIX PRESTO ACRYL	50
BOLIX US	17	BOLIX SIG COMPLEX	27	BOLIX ACTIVE GRUNT LATEX	50
BOLIX UZ	18	BOLIX PI	27	BOLIX SG-W	50
BOLIX ZW	18	BOLIX T	27	PAINTS FOR PROFESSIONALS	
BOLIX WM	18	BOLIX ULTRAGRUNT	28	BOLIX HB SUPER WHITE	52
BOLIX UWM	18	BOLIX BETOGRUNT	28	BOLIX AC3	52
BOLIX KD	18	BOLIX O	28	BOLIX AC5	52
BOLIX UZB	19	BOLIX N	28	BOLIX GC15	52
BOLIX ALFA	19	BOLIX OM	28	BOLIX GC30	52
BOLIX BETA	19	BOLIX BIK	29	PRODUCTS FOR TERRACES, LOGGIAS AND BALCONIES	
SETTING ACCELERATORS		BOLIX BW	29	BOLIX AKO	54
BOLIX PW EXPRESS	19	BOLIX CLN	29	BOLIX SCS	54
BOLIX PW-S EXPRESS	19	SKIM COATS/JOINT COMPOUNDS		BOLIX WB	54
BOLIX REINFORCING MESH		BOLIX M10	30	BOLIX SPN	54
BOLIX HD 158/S	20	BOLIX KL	30	BOLIX HYDRO DUO	54
BOLIX HD 335/S	20	BOLIX SN20	30	BOLIX PC-B	55
BOLIX FOAMS		BOLIX W	30	BOLIX PC-S	55
BOLIX ZP	20	BOLIX SP	30	BOLIX PC	55
BOLIX PM-L	20	DESIGN COLLECTION PRODUCTS		BOLIX EK	55
RENDERS AND PLASTERS		BOLIX TBR	38	BOLIX HYDRO-TW	55
BOLIX OT	20	BOLIX DIAMENT	38	BOLIX HYDRO-TBS	56
BOLIX TCW-L	20	BOLIX DECO LAZUR	38	BOLIX HYDRO-MB	56
THIN-COAT RENDERS		BOLIX BR	38	BOLIX SD	56
BOLIX MP	21	BOLIX TM DECO	38	BALCONY PROFILES	
BOLIX MP DO MALOWANIA	21	BOLIX TR	39	BOLIX PAL	57
BOLIX	21	BOLIX DECO _{BM}	39	BOLIX PAL-E	57
BOLIX TM	22	BOLIX METALLIC POINT	39	BOLIX PAL-100	57
BOLIX SI-SIT	22	BOLIX WS	39	BOLIX PAL-R	58
BOLIX S	22	BOLIX WOOD EFFECT PANEL	40	BOLIX W35	58
BOLIX ULTRACLEAN	22	BOLIX CONCREATE EFFECT PANEL	40	IZO-STROP PRODUCTS	
BOLIX SIT	22	BOLIX 3D EFFECT PANEL	40	BOLIX STG	60
BOLIX SIGMA	23	BOLIX RIBBED EFFECT PANEL	40	BOLIX STS 10	60
BOLIX SIT-P	23	BOLIX KD PANEL	41	BOLIX STS 15	60
ANTIMICROBIAL PROTECTION		BOLIX KD CLEAR PANEL	40	BOLIX ZW IZO-STROP	60
BOLIX COMPLEX		BOLIX BQS	40	BOLIX MP KA 15M	60
BOLIX GLO	23	BOLIX BQB	40	BITUMEN WATERPROOFING	
BOLIX PRO	23	BOLIX BQB MASS	40	BOLIX B-MB EMULSION	62
BOLIX PROCLEAN	23	ADHESIVES, GROUTS AND OTHER PRODUCTS FOR CERAMICS AND NATURAL STONE		BOLIX B-15M EXPRESS	62
EXTERIOR WALL PAINTS		BOLIX B	44	BOLIX B-25M PROFI	62
BOLIX AZ	24	BOLIX P	44	BOLIX B-25M UNI	62
BOLIX SZ	24	BOLIX P BIAŁY	44		
BOLIX SIL	24	BOLIX PE	44		
BOLIX GAMMA	25	BOLIX E	44		
BOLIX SIL-P	25	BOLIX SE	45		
BOLIX SIL-RN	25	BOLIX SE BIAŁY	45		
BOLIX SIL ULTRACLEAN	25	BOLIX GE	45		
KEY COATS		BOLIX HYDRO	45		
BOLIX OP	26	BOLIX HYDRO-T	46		
BOLIX SG COLOUR	26	BOLIX AQUASTOP	46		
BOLIX SIG COLOUR	26	INTERIOR PAINTS			
BOLIX EPSILON	26	BOLIX SONATA ACRYL WHITE	49		
		BOLIX ACORD ACRYL PERFECT	49		
		BOLIX POLITONE PLUS	49		
		BOLIX CAMERTONE LATEX SATIN	49		
		BOLIX CAMERTONE LATEX MATT	50		
		BOLIX HARMONIC SILICATE	50		
		BOLIX PROCARE AG+	50		

SPECTRUM 300+ COLOUR PALETTE



SPECTRUM 300+ COLOUR PALETTE



SPECTRUM 300+ COLOUR PALETTE



23 A



23 B



23 C



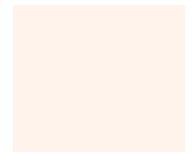
23 D



23 E



23 F



23 G



24 A



24 B



24 C



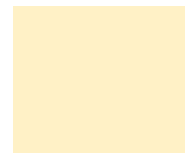
24 D



24 E



24 F



24 G



25 A



25 B



25 C



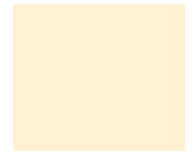
25 D



25 E



25 F



25 G



26 A



26 B



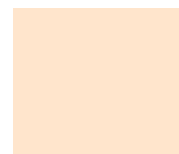
26 C



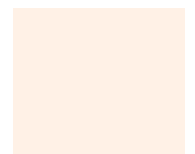
26 D



26 E



26 F



26 G



27 A



27 B



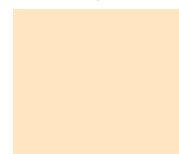
27 C



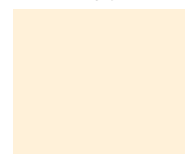
27 D



27 E



27 F



27 G



28 A



28 B



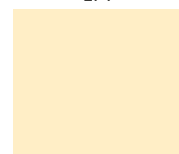
28 C



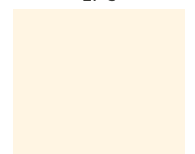
28 D



28 E



28 F



28 G



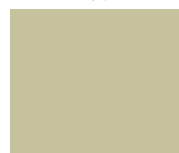
29 A



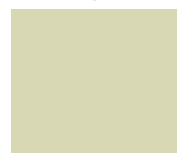
29 B



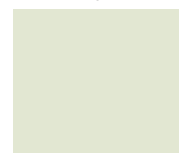
29 C



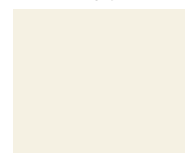
29 D



29 E



29 F



29 G



30 A



30 B



30 C



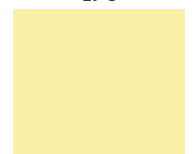
30 D



30 E



30 F



30 G



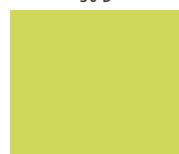
31 A



31 B



31 C



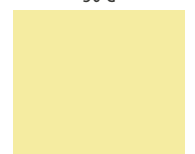
31 D



31 E



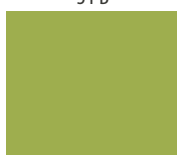
31 F



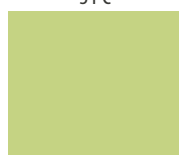
31 G



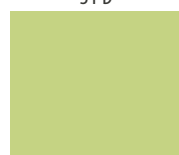
32 A



32 B



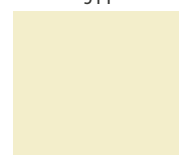
32 C



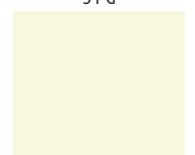
32 D



32 E



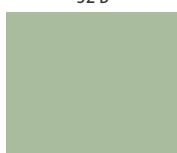
32 F



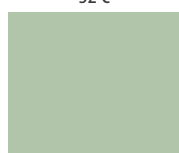
32 G



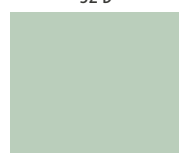
33 A



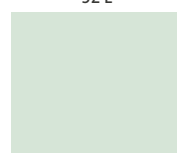
33 B



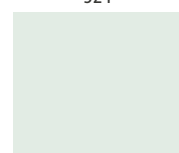
33 C



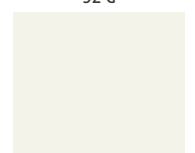
33 D



33 E



33 F



33 G

SPECTRUM 300+ COLOUR PALETTE



INSIDE PAINTS COLOUR PALETTE

				
Krem Orzechowy/1000 (przybliżony kolor z palety NCS 0500-N)	Jaśminowy/1005 (przybliżony kolor z palety NCS 0502-Y)	Wiosenny Promyk/1010 (przybliżony kolor z palety NCS 0505-Y50R)	Kremowy/1015 (przybliżony kolor z palety NCS 0505-Y40R)	Piasek Maroka/1020 (przybliżony kolor z palety NCS 1010-Y50R)
				
Róż Indyjski/1025 (przybliżony kolor z palety NCS 0515-Y50R)	Morelowy/1030 (przybliżony kolor z palety NCS 0520-Y40R)	Brzoskwinowy/1035 (przybliżony kolor z palety NCS 0520-Y50R)	Gorąca Pomarańcza/1040 (przybliżony kolor z palety NCS 0530-Y40R)	Dojrzały Melon/1045 (przybliżony kolor z palety NCS 0540-Y50R)
				
Koralowe Morze/1050 (przybliżony kolor z palety NCS 2040-Y60R)	Rustykalna Cegła/1055 (przybliżony kolor z palety NCS 2050-Y50R)	Wosk Pszczeli/1060 (przybliżony kolor z palety NCS 0510-Y20R)	Słoneczny/1065 (przybliżony kolor z palety NCS 0530-Y)	Bananowy/1070 (przybliżony kolor z palety NCS 0540-Y)
				
Kanarkowy/1075 (przybliżony kolor z palety NCS 0570-Y)	Miodowy/1080 (przybliżony kolor z palety NCS 0550-Y10R)	Złoto Azteków/1085 (przybliżony kolor z palety NCS 1060-Y10R)	Słoneczny Poranek/1090 (przybliżony kolor z palety NCS 0540-Y10R)	Słonecznikowy/1095 (przybliżony kolor z palety NCS 1040-Y10R)
				
Złoty Płomień/1100 (przybliżony kolor z palety NCS 1040-Y20R)	Bursztynowy/1105 (przybliżony kolor z palety NCS 1050-Y20R)	Pomarańczowy/1110 (przybliżony kolor z palety NCS 1060-Y30R)	Cytrusowy Sad/1115 (przybliżony kolor z palety NCS 1060-Y50R)	Cytrynowy/1120 (przybliżony kolor z palety NCS 0540-G80Y)
				
Ananasowy/1125 (przybliżony kolor z palety NCS 0550-G80Y)	Veronesa/1130 (przybliżony kolor z palety NCS 0550-G70Y)	Botaniczny/1135 (przybliżony kolor z palety NCS 0560-G50Y)	Wiosenny/1140 (przybliżony kolor z palety NCS 0550-G50Y)	Zielone Jabłuszko/1145 (przybliżony kolor z palety NCS 1050-G50Y)
				
Powitanie Wiosny/1150 (przybliżony kolor z palety NCS 0540-G40Y)	Zielone Winogrona/1155 (przybliżony kolor z palety NCS 1050-G40Y)	Wiosenny Powiew/1160 (przybliżony kolor z palety NCS 1060-G40Y)	Oliwkowy/1165 (przybliżony kolor z palety NCS 2040-G50Y)	Pistacjowy/1170 (przybliżony kolor z palety NCS 2050-G60Y)
				
Złota Jesień/1175 (przybliżony kolor z palety NCS 2040-G90Y)	Agrestowy/1180 (przybliżony kolor z palety NCS 2020-G60Y)	Szałwiowy/1185 (przybliżony kolor z palety NCS 3020-G40Y)	Miętowy/1190 (przybliżony kolor z palety NCS 3020-G50Y)	Jasny Brąz/1195 (przybliżony kolor z palety NCS 3020-Y40R)
				
Tabaczkowy/1200 (przybliżony kolor z palety NCS 4020-Y50R)	Ciemny Brąz/1205 (przybliżony kolor z palety NCS 5020-Y40R)	Sienna Palona/1210 (przybliżony kolor z palety NCS 3020-Y80R)	Mleczno-czekoladowy/1215 (przybliżony kolor z palety NCS 4020-Y80R)	Czekoladowy/1220 (przybliżony kolor z palety NCS 5010-Y90R)
				
Fuksja/1225 (przybliżony kolor z palety NCS 0565-R)	Sekret Ogrodu/1230 (przybliżony kolor z palety NCS 2060-R10B)	Mauretański/1235 (przybliżony kolor z palety NCS 3040-R10B)	Terracota/1240 (przybliżony kolor z palety NCS 1060-Y80R)	Koralowy/1245 (przybliżony kolor z palety NCS 1070-Y80R)
				
Ciemny Łosoś/1250 (przybliżony kolor z palety NCS 2060-Y90R)	Ziemisty/1255 (przybliżony kolor z palety NCS 4005-R20B)	Taupe/1260 (przybliżony kolor z palety NCS 5005-R20B)	Kamienna Ściana/1265 (przybliżony kolor z palety NCS 4050-Y80R)	Latte/1270 (przybliżony kolor z palety NCS 1505-Y50R)

INSIDE PAINTS COLOUR PALETTE

				
Marmurowy Chłód/1275 (przybliżony kolor z palety NCS 2005-Y70R)	Róża Pustyni/1280 (przybliżony kolor z palety NCS 2005-Y80R)	Jasny Beż/1285 (przybliżony kolor z palety NCS 2020-Y30R)	Orzechowy/1290 (przybliżony kolor z palety NCS 1515-Y50R)	Ciemny Beż/1295 (przybliżony kolor z palety NCS 3010-Y50R)
				
Lodowa Cytryna/1300 (przybliżony kolor z palety NCS 0507-Y)	Wanilia/1305 (przybliżony kolor z palety NCS 1010-Y50R)	Pustynny/1310 (przybliżony kolor z palety NCS 1515-Y20R)	Lawendowy Blask/1315 (przybliżony kolor z palety NCS 1020-R30B)	Lawendowy/1320 (przybliżony kolor z palety NCS 1015-R40B)
				
Zimna Lawenda/1325 (przybliżony kolor z palety NCS 1020-R50B)	Liliowy/1330 (przybliżony kolor z palety NCS 3040-R50B)	Królewski Fiolet/1335 (przybliżony kolor z palety NCS 4040-R50B)	Ciemny Wrzós/1340 (przybliżony kolor z palety NCS 5030-R50B)	Naturalne Piękno/1345 (przybliżony kolor z palety NCS 4020-R20B)
				
Winy/1350 (przybliżony kolor z palety NCS 5020-R50B)	Wrzosowy/1355 (przybliżony kolor z palety NCS 5020-R50B)	Różany Beż/1360 (przybliżony kolor z palety NCS 0505-Y90R)	Truskawkowa Mgiełka/1365 (przybliżony kolor z palety NCS 0515-R10B)	Różowy/1370 (przybliżony kolor z palety NCS 0530-R20B)
				
Żurawinowy/1375 (przybliżony kolor z palety NCS 4040-R20B)	Tropikalna Jagoda/1380 (przybliżony kolor z palety NCS 3040-R40B)	Jesienny Wrzós/1385 (przybliżony kolor z palety NCS 3010-R30B)	Miniaturowy Irys/1390 (przybliżony kolor z palety NCS 1020-R60B)	Kwitnący Bratek/1395 (przybliżony kolor z palety NCS 2040-R70B)
				
Wieczorny Fiolet/1400 (przybliżony kolor z palety NCS 4050-R60B)	Krople Rosy/1405 (przybliżony kolor z palety NCS 0540-R90B)	Poranne Niebo/1410 (przybliżony kolor z palety NCS 1040-R90B)	Czysty Błękit/1415 (przybliżony kolor z palety NCS 1050-R90B)	Lawendowa Dama/1420 (przybliżony kolor z palety NCS 2020-R70B)
				
Błękitny Płomień/1425 (przybliżony kolor z palety NCS 4020-R90B)	Morski/1430 (przybliżony kolor z palety NCS 3040-B10G)	Lazurowy/1435 (przybliżony kolor z palety NCS 2050-B)	Błękitne Niebo/1440 (przybliżony kolor z palety NCS 2060-B)	Kapitański Błękit/1445 (przybliżony kolor z palety NCS 2065-R90B)
				
Zieleń Morska/1450 (przybliżony kolor z palety NCS 3060-B70G)	Karaibski Sen/1455 (przybliżony kolor z palety NCS 1050-B50G)	Raj Oceanu/1460 (przybliżony kolor z palety NCS 1030-B50G)	Zielona Wierzba/1465 (przybliżony kolor z palety NCS 2030-G10Y)	Seledynowy/1470 (przybliżony kolor z palety NCS 0530-B50G)
				
Widok Oceanu/1475 (przybliżony kolor z palety NCS 0520-B40G)	Śnieżna Przełęcz/1480 (przybliżony kolor z palety NCS 1500-N)	Versal/1485 (przybliżony kolor z palety NCS 2002-B)	Srebro Królewskie/1490 (przybliżony kolor z palety NCS 2502-B)	Venecja/1495 (przybliżony kolor z palety NCS 3000-N)
				
Cień Drzewa/1500 (przybliżony kolor z palety NCS 4000-N)	Grafitowy/1505 (przybliżony kolor z palety NCS 5502-B)			

MOSAIC RENDERS COLOUR PALETTE BOLIX TM



TM 01A



TM 01B



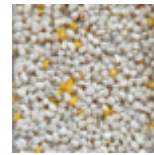
TM 01C



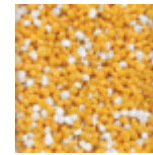
TM 01D



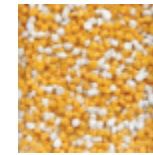
TM 01E



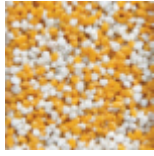
TM 01F



TM 02A



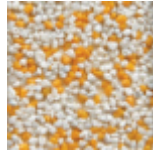
TM 02B



TM 02C



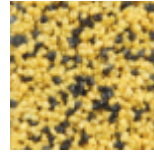
TM 02D



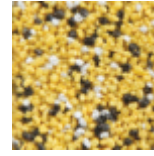
TM 02E



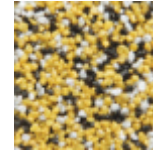
TM 02F



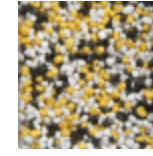
TM 03A



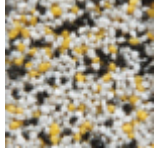
TM 03B



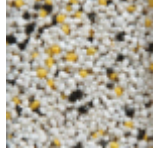
TM 03C



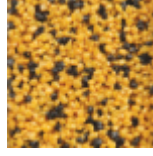
TM 03D



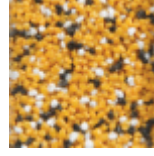
TM 03E



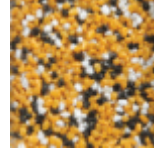
TM 03F



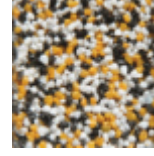
TM 04A



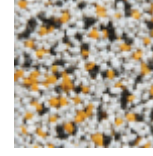
TM 04B



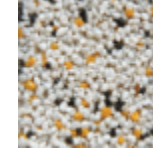
TM 04C



TM 04D



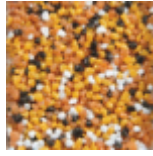
TM 04E



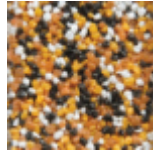
TM 04F



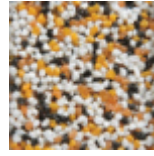
TM 05A



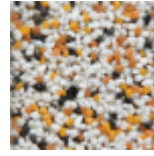
TM 05B



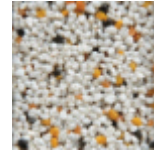
TM 05C



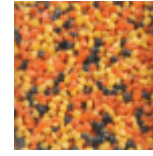
TM 05D



TM 05E



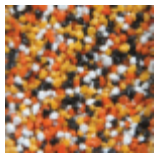
TM 05F



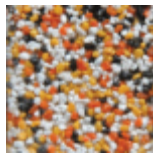
TM 06A



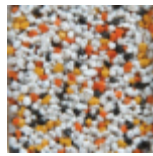
TM 06B



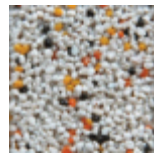
TM 06C



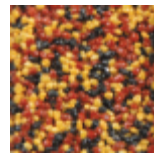
TM 06D



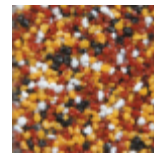
TM 06E



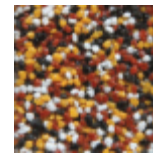
TM 06F



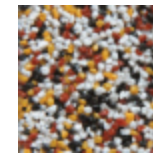
TM 07A



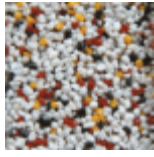
TM 07B



TM 07C



TM 07D



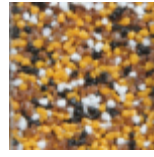
TM 07E



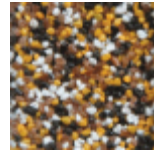
TM 07F



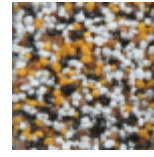
TM 08A



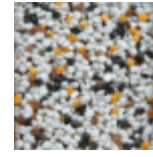
TM 08B



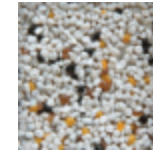
TM 08C



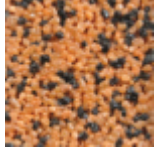
TM 08D



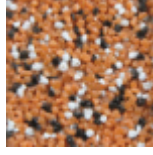
TM 08E



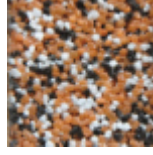
TM 08F



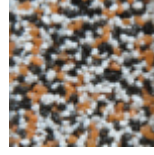
TM 09A



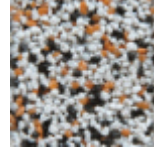
TM 09B



TM 09C



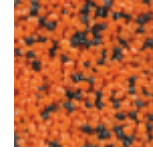
TM 09D



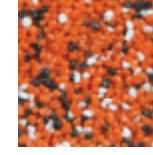
TM 09E



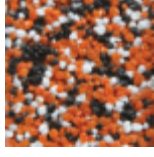
TM 09F



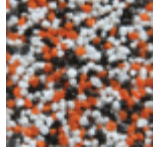
TM 10A



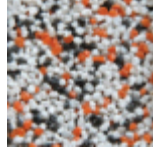
TM 10B



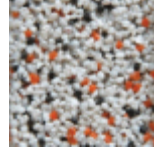
TM 10C



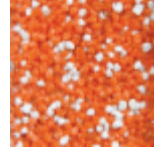
TM 10D



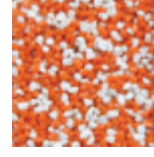
TM 10E



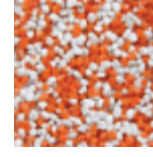
TM 10F



TM 11A



TM 11B



TM 11C



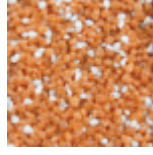
TM 11D



TM 11E



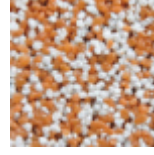
TM 11F



TM 12A



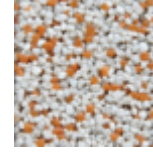
TM 12B



TM 12C



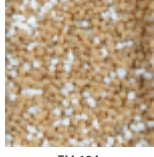
TM 12D



TM 12E



TM 12F



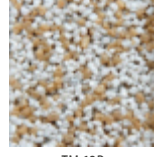
TM 13A



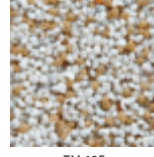
TM 13B



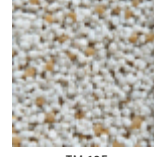
TM 13C



TM 13D



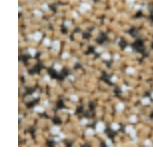
TM 13E



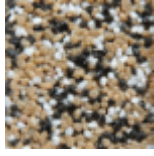
TM 13F



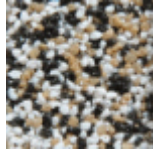
TM 14A



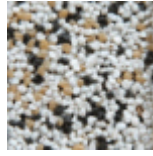
TM 14B



TM 14C



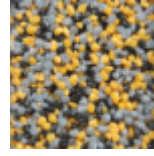
TM 14D



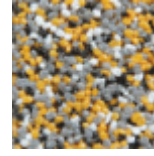
TM 14E



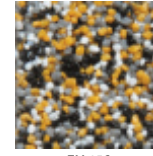
TM 14F



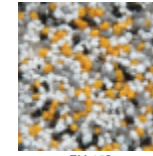
TM 15A



TM 15B

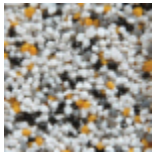


TM 15C



TM 15D

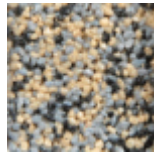
MOSAIC RENDERS COLOUR PALETTE BOLIX TM



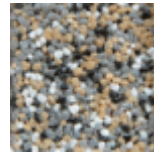
TM 15E



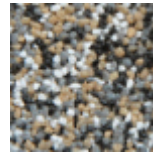
TM 15F



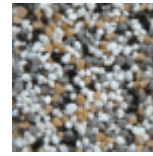
TM 16A



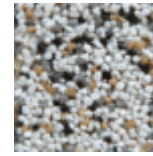
TM 16B



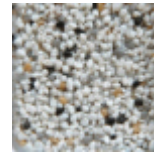
TM 16C



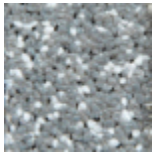
TM 16D



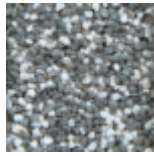
TM 16E



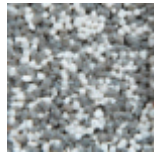
TM 16F



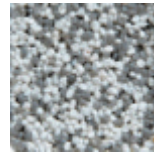
TM 17A



TM 17B



TM 17C



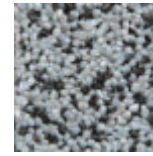
TM 17D



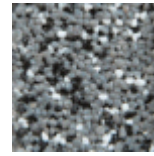
TM 17E



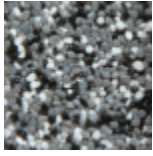
TM 17F



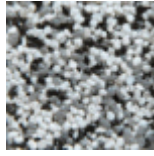
TM 18A



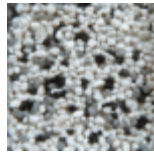
TM 18B



TM 18C



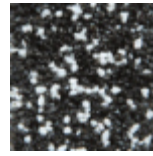
TM 18D



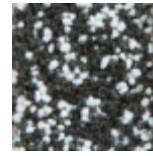
TM 18E



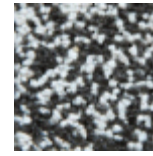
TM 18F



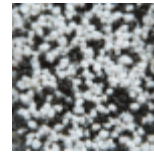
TM 19A



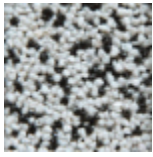
TM 19B



TM 19C



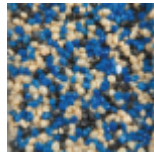
TM 19D



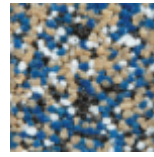
TM 19E



TM 19F



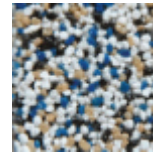
TM 20A



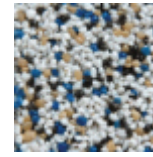
TM 20B



TM 20C



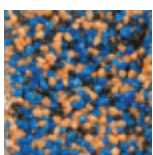
TM 20D



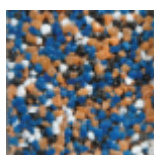
TM 20E



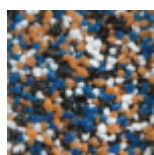
TM 20F



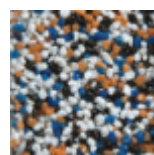
TM 21A



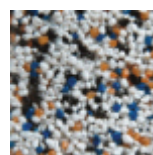
TM 21B



TM 21C



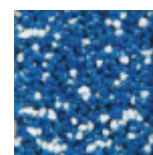
TM 21D



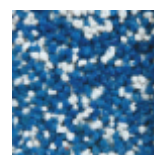
TM 21E



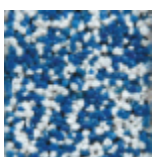
TM 21F



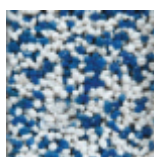
TM 22A



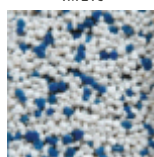
TM 22B



TM 22C



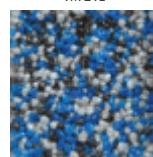
TM 22D



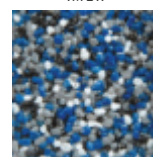
TM 22E



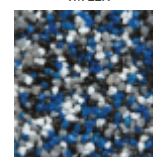
TM 22F



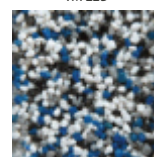
TM 23A



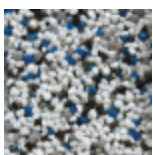
TM 23B



TM 23C



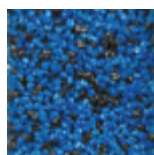
TM 23D



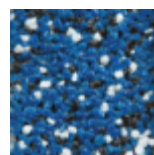
TM 23E



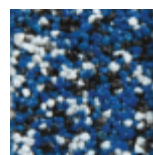
TM 23F



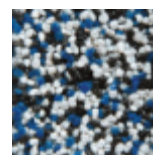
TM 24A



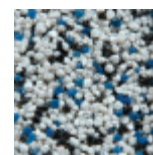
TM 24B



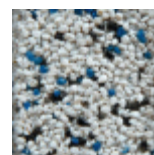
TM 24C



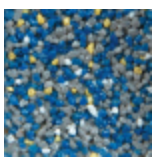
TM 24D



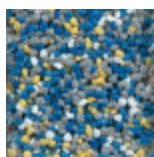
TM 24E



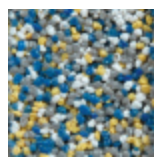
TM 24F



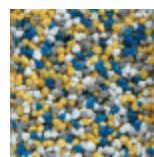
TM 25A



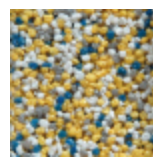
TM 25B



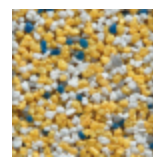
TM 25C



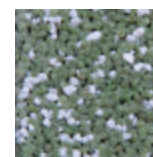
TM 25D



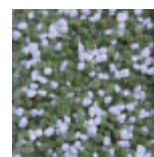
TM 25E



TM 25F



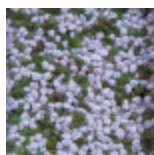
TM 26A



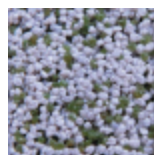
TM 26B



TM 26C



TM 26D



TM 26E



TM 26F



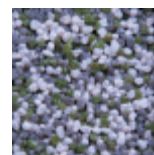
TM 27A



TM 27B



TM 27C



TM 27D



TM 27E



TM 27F



TM 28A



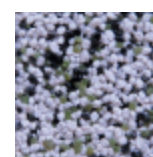
TM 28B



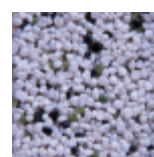
TM 28C



TM 28D



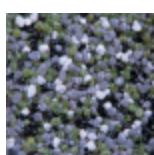
TM 28E



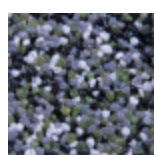
TM 28F



TM 29A



M 29B



TM 29C



TM 29D



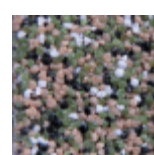
TM 29E



TM 29F



TM 30A



TM 30B

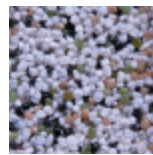
MOSAIC RENDERS COLOUR PALETTE BOLIX TM



TM 30C



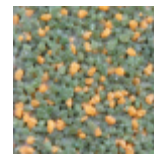
TM 30D



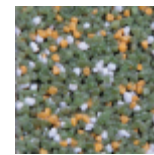
TM 30E



TM 30F



TM 31A



TM 31B



TM 31C



TM 31D



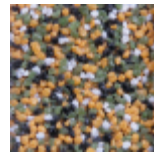
TM 31E



TM 31F



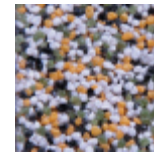
TM 32A



TM 32B



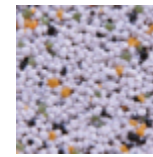
TM 32C



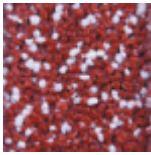
TM 32D



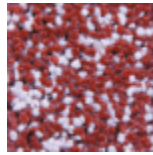
TM 32E



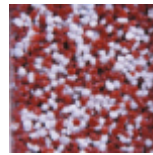
TM 32F



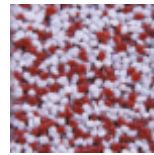
TM 33A



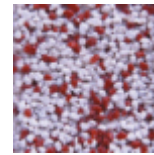
TM 33B



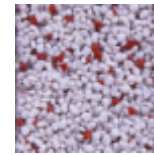
TM 33C



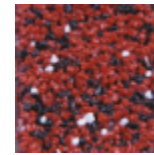
TM 33D



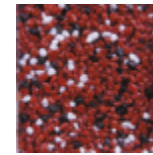
TM 33E



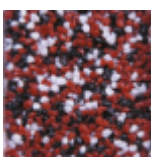
TM 33F



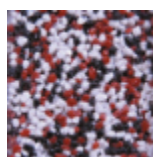
TM 34A



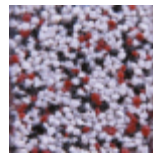
TM 34B



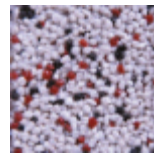
TM 34C



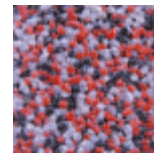
TM 34D



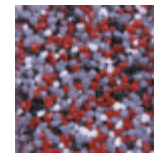
TM 34E



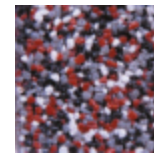
TM 34F



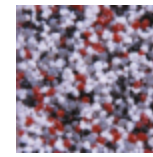
TM 35A



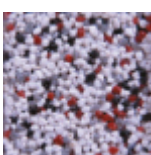
TM 35B



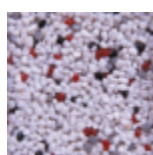
TM 35C



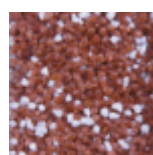
TM 35D



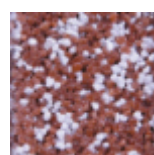
TM 35E



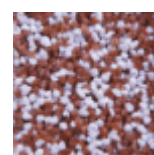
TM 35F



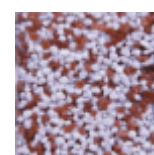
TM 36A



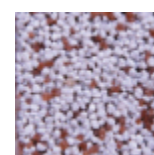
TM 36B



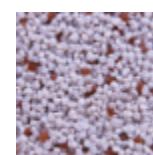
TM 36C



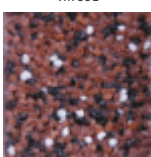
TM 36D



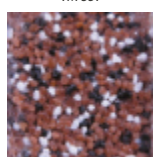
TM 36E



TM 36F



TM 37A



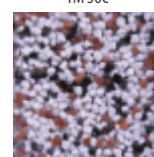
TM 37B



TM 37C



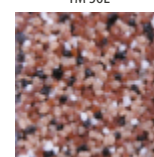
TM 37D



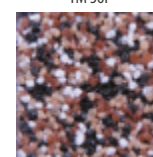
TM 37E



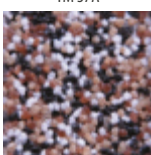
TM 37F



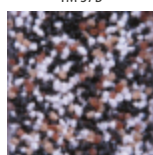
TM 38A



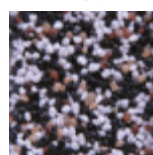
TM 38B



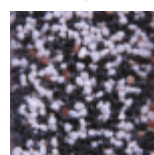
TM 38C



TM 38D



TM 38E



TM 38F



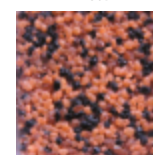
TM 39A



TM 39B



TM 39C



TM 39D



TM 39E



TM 39F



TM 40A



TM 40B



TM 40C



TM 40D



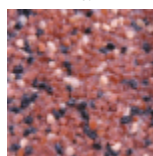
TM 40E



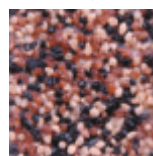
TM 40F



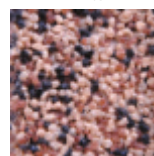
TM 41A



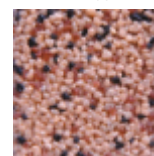
TM 41B



TM 41C



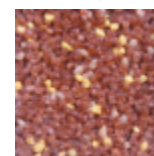
TM 41D



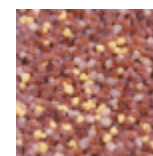
TM 41E



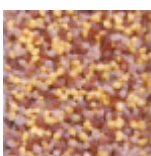
TM 41F



TM 42A



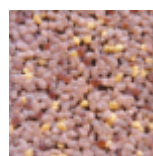
TM 42B



TM 42C



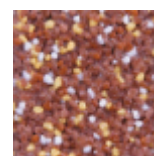
TM 42D



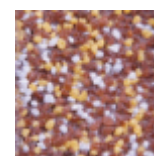
TM 42E



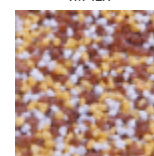
TM 42F



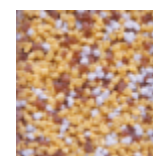
TM 43A



TM 43B



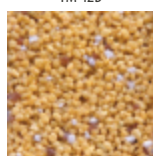
TM 43C



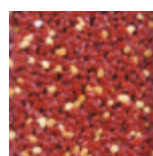
TM 43D



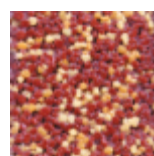
TM 43E



TM 43F



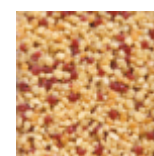
TM 44A



TM 44B



TM 44C



TM 44D

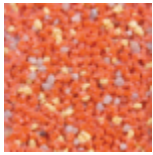


TM 44E

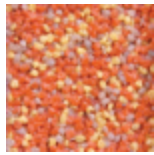


TM 44F

MOSAIC RENDERS COLOUR PALETTE BOLIX TM



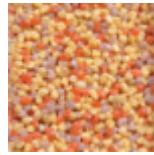
TM 45A



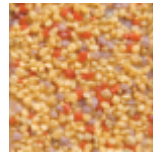
TM 45B



TM 45C



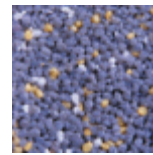
TM 45D



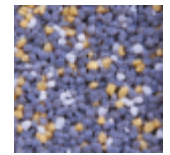
TM 45E



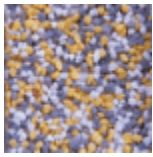
TM 45F



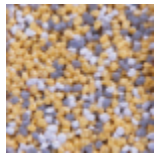
TM 46A



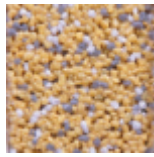
TM 46B



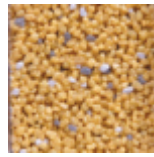
TM 46C



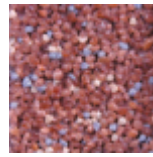
TM 46D



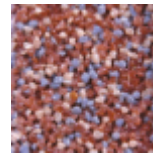
TM 46E



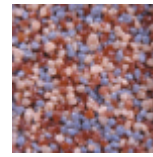
TM 46F



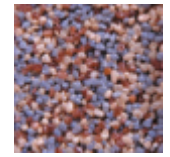
TM 47A



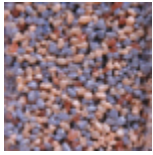
TM 47B



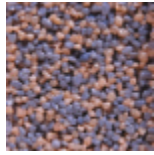
TM 47C



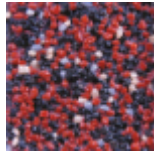
TM 47D



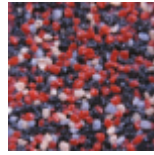
TM 47E



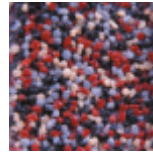
TM 47F



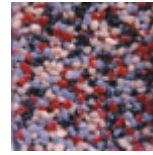
TM 48A



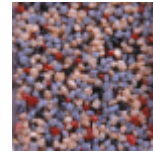
TM 48B



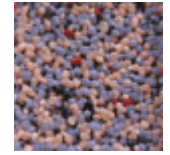
TM 48C



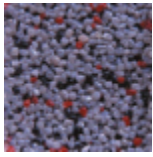
TM 48D



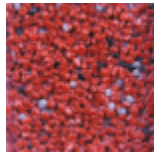
TM 48E



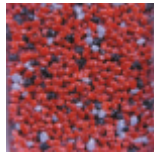
TM 48F



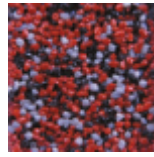
TM 49A



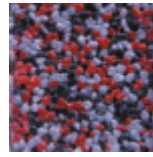
TM 49B



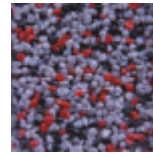
TM 49C



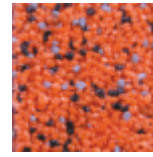
TM 49D



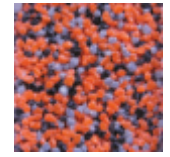
TM 49E



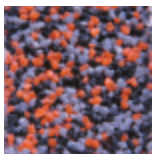
TM 49F



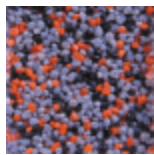
TM 50A



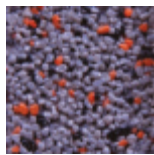
TM 50B



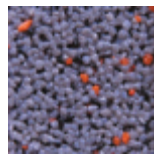
TM 50C



TM 50D



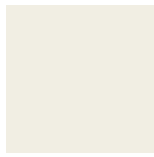
TM 50E



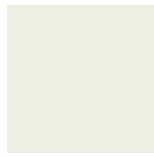
TM 50F



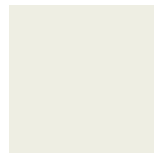
TRENDY 401



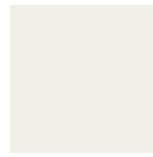
TRENDY 402



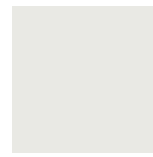
TRENDY 403



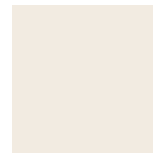
TRENDY 404



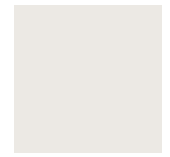
TRENDY 405



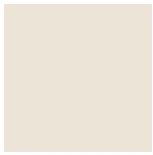
TRENDY 406



TRENDY 407



TRENDY 408



TRENDY 409



TRENDY 500



TRENDY 501



TRENDY 502



TRENDY 503



TRENDY 504



TRENDY 505



TRENDY 506



TRENDY 507



TRENDY 508



TRENDY 509



TRENDY 510



TRENDY 511



TRENDY 512



TRENDY 513



TRENDY 514



TRENDY 515



TRENDY 516



TRENDY 517



TRENDY 518



TRENDY 519



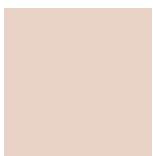
TRENDY 520



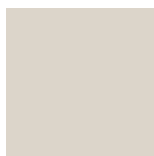
TRENDY 521



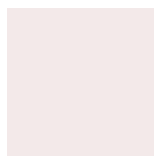
TRENDY 522



TRENDY 523



TRENDY 524



TRENDY 525



TRENDY 526



TRENDY 527



TRENDY 528



TRENDY 529



TRENDY 530



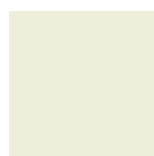
TRENDY 531



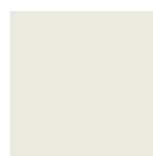
TRENDY 532



TRENDY 533



TRENDY 534



TRENDY 535



TRENDY 536



TRENDY 537



TRENDY 538

TRENDY COLOUR PALETTE

BOLIX[®]

OCIEPLENIA TYNKI FARBY KLEJE

BOLIX S.A.

ul. Stolarska 8,
34-300 Żywiec

POLSKA

tel.: 33 475 06 00

e-mail: marketing@bolix.pl

www.bolix.pl

Edycja
MAJ
2023